

Skill Level:

Straightforward

Time to Complete:

Approximately 15 Minutes

Required Tools:

- Pentalobe Screwdriver
- Torx T5 Screwdriver

Before Proceeding:

Make sure you have an up-to-date backup of your data.



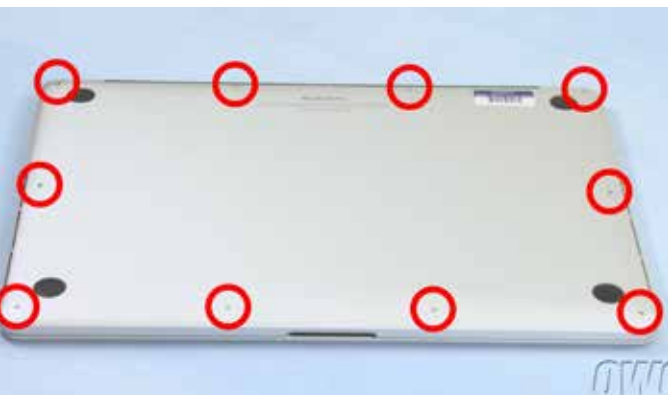
- Perform upgrade using proper anti-static precautions
- Discharge static electricity before beginning
- Work on a static free surface

Part One: Removing the Original SSD Card

1. The first step is to close the MacBook Pro and flip it over.



2. To access the inside of the MacBook Pro there are 10 Pentalobe screws to remove from the bottom cover. There are 3 different lengths for these screws so be sure to separate them as they are removed so that they are easier to replace later on.



3. Start by removing the 2 center screws at the top. These screws are shorter than the others.



4. Then remove the 4 screws along the sides. These screws are longer than the others.



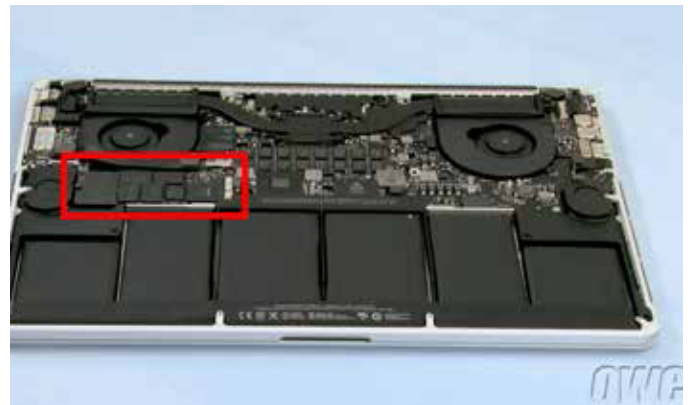
5. Finally, remove the 4 bottom screws. These screws are medium sized compared with the other screws.



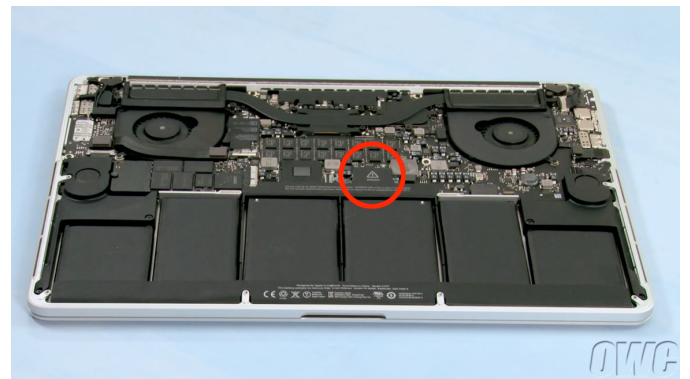
6. The bottom cover can now be removed. Starting near the hinge edge, simply lift up on the bottom cover and set it aside.



The Solid State Drive is located near the side of the system.



7. First, disconnect the battery by gently lifting up on the tab that covers the battery connector, then detach the connector using a nylon pry tool.



8. To remove the drive, first remove the single Torx T5 screw holding it in place.



9. The drive can now be removed, lift slightly and carefully slide it out of its socket and set it aside.



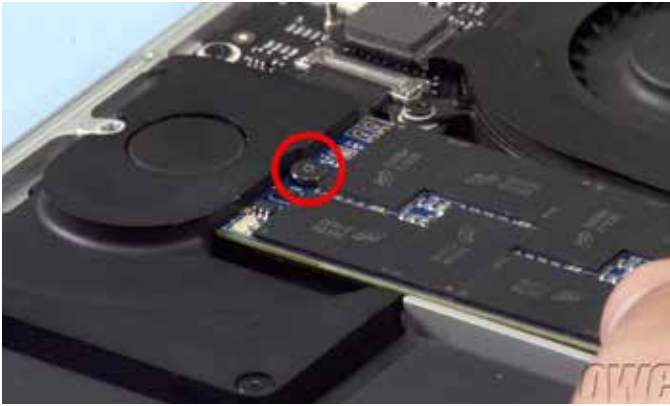
Part Two: Installing the New Solid State Drive

10. To install the new drive, make sure the notch on the drive lines up with the pin in the drive connector, then slide the new drive into place.





- 11.** Secure the drive in the bay using the Torx T5 screw that was removed earlier.



- 12.** Reconnect the battery by gently pushing the connector back into its socket and then covering it with the tab.



- 13.** Once the new drive is installed, replace the bottom cover.



- 14.** Next, secure the bottom cover starting with the 2 shortest Pentalobe screws.



- 15.** Then, replace the 4 longest Pentalobe screws along the sides.



- 16.** Finally, replace the 4 medium Pentalobe screws along the bottom.



- 17.** Once the bottom cover is secure, the MacBook Pro can be flipped over and powered on. The installation is now complete!



Now you can begin formatting the new drive, along with transferring your data and OS over. Please visit www.macsales.com/data-transfer for more details.

Thank you for choosing OWC as your upgrade provider. For additional assistance with this upgrade, please contact our award-winning technical support team, available 24x7. Copyright 2015