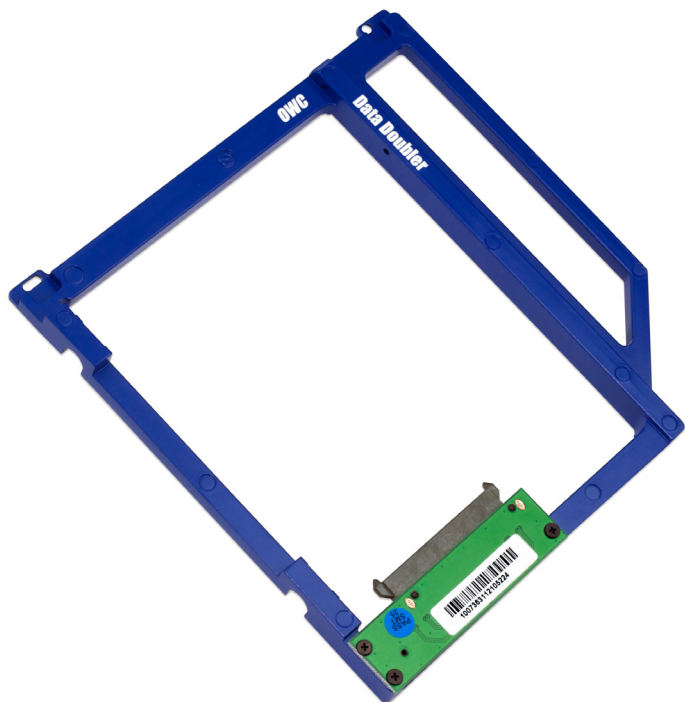


# ***Other World Computing***

## **Data Doubler**

*Optical Bay to SATA Hard Drive  
Converter Bracket*



## ***Installation Manual***

## 1 INTRODUCTION

### 1.1 SYSTEM REQUIREMENTS

- 1.1.1 Mac® Requirements
- 1.1.2 Hard Drive Requirements
- 1.1.3 Tool Requirements

### 1.2 PACKAGE CONTENTS

## 2 BRACKET ASSEMBLY

### 2.1 CONNECTION TO DRIVE

## 3 INSTALLATION

- 3.1 13" MacBook or MacBook Pro (Unibody 2008/2009) - Disassembly
- 3.2 13" MacBook or MacBook Pro (Unibody 2008/2009) - Bracket & Cable
- 3.3 13" MacBook or MacBook Pro (Unibody 2008/2009) - Installation
- 3.4 13" MacBook Pro (Unibody 2010/2011) - Disassembly
- 3.5 13" MacBook Pro (Unibody 2010/2011) - Bracket & Cable
- 3.6 13" MacBook Pro (Unibody 2010/2011) - Installation
- 3.7 13" MacBook Pro (MacBookPro8,1 & MacBookPro 9,2 2011/2012) - Disassembly
- 3.8 13" MacBook Pro (MacBookPro8,1 & MacBookPro 9,2 2011/2012) - Bracket & Cable
- 3.9 13" MacBook Pro (MacBookPro8,1 & MacBookPro 9,2 2011/2012) - Installation
- 3.10 15" MacBook Pro (Unibody 2008/2009) - Disassembly
- 3.11 15" MacBook Pro (Unibody 2008/2009) - Bracket & Cable
- 3.12 15" MacBook Pro (Unibody 2008/2009) - Installation
- 3.13 15" MacBook Pro (Unibody 2010/2011) - Disassembly
- 3.14 15" MacBook Pro (Unibody 2010/2011) - Bracket & Cable
- 3.15 15" MacBook Pro (Unibody 2010/2011) - Installation
- 3.16 15" MacBook Pro (MacBookPro8,2 & MacBookPro9,1 2011/2012) - Disassembly
- 3.17 15" MacBook Pro (MacBookPro8,2 & MacBookPro9,1 2011/2012) - Bracket & Cable
- 3.18 15" MacBook Pro (MacBookPro8,2 & MacBookPro9,1 2011/2012) - Installation
- 3.19 17" MacBook Pro (Unibody 2008/2009) - Disassembly
- 3.20 17" MacBook Pro (Unibody 2008/2009) - Bracket & Cable
- 3.21 17" MacBook Pro (Unibody 2008/2009) - Installation
- 3.22 17" MacBook Pro (Unibody 2010/2011) - Disassembly
- 3.23 17" MacBook Pro (Unibody 2010/2011) - Bracket & Cable
- 3.24 17" MacBook Pro (Unibody 2010/2011) - Installation
- 3.25 13" MacBook (Polycarbonate Unibody 2009) - Disassembly
- 3.26 13" MacBook (Polycarbonate Unibody 2009) - Bracket & Cable
- 3.27 13" MacBook (Polycarbonate Unibody 2009) - Installation

## 4 TROUBLESHOOTING & TIPS

### 4.1 TROUBLESHOOTING

### 4.2 INSTALLATION TIPS

### 4.3 USAGE TIPS

## 5 APPENDIX

### 5.1 FAQ

### 5.2 ABOUT DATA PROTECTION

## 6 CUSTOMER SERVICE

### 6.1 BEFORE CONTACTING CUSTOMER SERVICE

### 6.2 CONTACT INFORMATION

Thank you for purchasing the OWC Data Doubler. We're confident that it will provide years of high-performance service for your storage and backup needs.

This guide will get you up and running quickly, demonstrating how to install your own 2.5" hard drives into the OWC Data Doubler bracket and into your laptop.

Should you require additional support after reading this manual along with helpful tips and FAQs, please see the inside back page for OWC customer support options.



Your computer is a static-sensitive device. It is susceptible to invisible damage if not protected during installation.

We recommend proper grounding through the use of a grounding strap. Be sure to work in a clean and static-free area, and avoid wearing clothing that retains static charges. For more information, please visit

<http://www.macsales.com/static>

**Got tools?** If you don't have the tools necessary to complete this installation, Newer Technology has a fantastic toolkit which includes everything you need to perform this and most other common computer hardware installations.



It's available at:

<http://www.macsales.com/tools>

## 1 INTRODUCTION

### 1.1 System Requirements

#### 1.1.1 Mac Requirements

- MacBook Pro 17" (Early 2009, Mid 2009, Early 2010, Early 2011, Late 2011)
- MacBook Pro 15" (Late 2008, Mid 2009, Early 2010, Early 2011, Late 2011, Mid 2012"
- MacBook Pro 13" (Mid 2009, Early 2010, Early 2011, Late 2011, Mid 2012)
- MacBook 13" (Late 2008)
- MacBook 13" (Late 2009, Early 2010)

#### 1.1.2 Hard Drive Requirements

The OWC Data Doubler will work with any 7mm or 9.5mm tall, 2.5" SATA Hard Disk Drive, including SSD Drives.

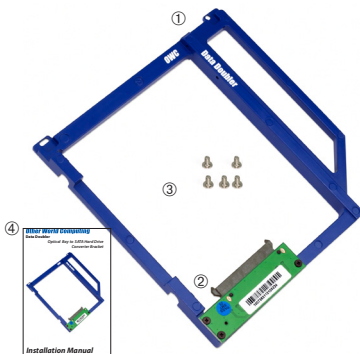
#### 1.1.3 Tool Requirements

- Phillips #00 Screwdriver
- Phillips #1 or #2 Screwdriver
- Torx T8 Screwdriver
- Nylon Pry Tool (optional, a fingernail will work as well)
- Business card (optional, helpful but not required)

### 1.2 Package Contents

#### Item

- ① OWC Data Doubler Bracket
- ② Interposer Board
- ③ Screws (5pcs, 2 sizes)
- ④ Installation Manual





2 BRACKET ASSEMBLY

2.1 Interposer Attachment

1



Attach your hard drive to the green interposer board via the SATA drive connection, and then use the two large screws included in the kit to attach the drive to the bracket. Make sure the screws are firmly tightened.

You are now ready to install the OWC Data Doubler into your laptop. Turn back to the Table of Contents and determine which laptop you are installing the OWC Data Doubler bracket into to proceed with the installation.

## 3 INSTALLATION

### 3.1 MacBook or MacBook Pro 13" (Unibody 2008/2009), with or without a removable battery - Disassembly

Begin by making sure that your computer is fully shut down.

If you have a MacBook 13" with a removable battery, follow step 1, 2 and 3; if you have a MacBook Pro 13" with a non-removable battery, please proceed to step 4.

①



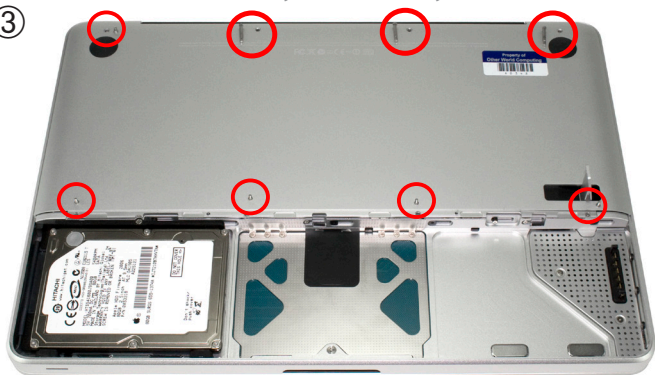
②



Remove the battery cover from your laptop by lifting the release lever and taking the metal cover off.

### 3.1 MacBook or MacBook Pro 13" (Unibody 2008/2009), with or without a removable battery - Disassembly (continued)

③



Take the battery out of the laptop and set it aside.

Remove the 8 screws that secure the bottom cover onto the laptop, using a Phillips P0 screwdriver.

Note that the top right 3 screws are much longer and will need to be replaced in the same locations. There are only 2 types of screw used on the bottom cover, so you do not need to keep them in the same positions.

Once you have the screws removed, place your fingers at the top of the bottom cover near the black vent underneath the screen, and lift to release the bottom cover. There are 2 snap clips on the bottom cover that will release when you lift it off. Set the bottom cover aside.

Proceed to step 5.

### 3.1 MacBook or MacBook Pro 13" (Unibody 2008/2009), with or without a removable battery - Disassembly (continued)

④



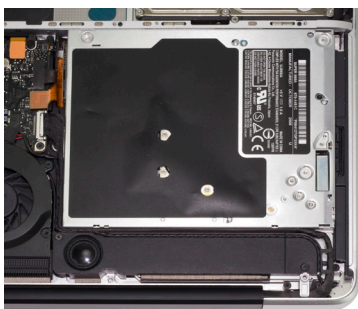
Remove the 10 screws that secure the bottom cover onto the laptop, using a Phillips P0 screwdriver.

Note that the top right 3 screws are much longer and will need to be replaced back to the same locations. There are only 2 types of screw used on the bottom cover, so you do not need to keep them in the same positions.

Once you have the screws removed, place your fingers at the top of the bottom cover near the black vent underneath the screen, and lift to release the bottom cover. There are 2 snap clips on the bottom cover that will release when you lift it off. Set the bottom cover aside.

### 3.1 MacBook or MacBook Pro 13" (Unibody 2008/2009), with or without a removable battery - Disassembly (continued)

⑤

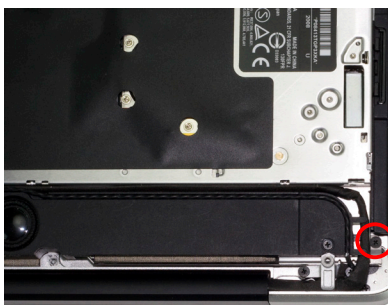


After you've taken the bottom cover off of the computer, you will see the optical drive that you will need to remove to install the OWC Data Doubler.

Turn the computer around so that the optical drive is closer to you. The next steps will have the computer oriented in this direction and all pictures will reflect this setup.

### 3.1 MacBook or MacBook Pro 13" (Unibody 2008/2009), with or without a removable battery - Disassembly (continued)

⑥

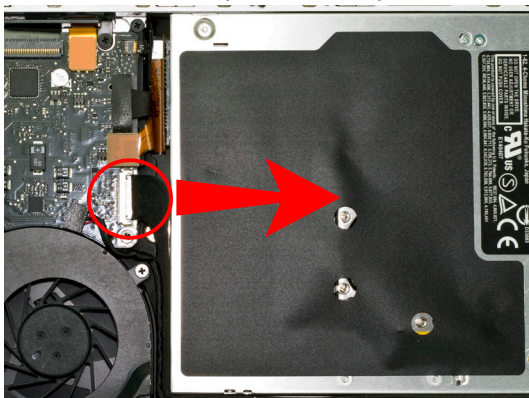


Beginning on the right side of the optical drive (the side closest to the outside edge of the laptop), remove the 2 Philips screws circled in red.

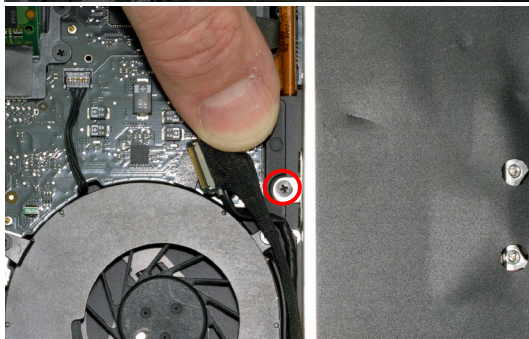
You will not be reusing these screws, but rather be replacing them with longer ones from your included screws when re-assembling. These are the only two screws you will not reuse during the assembly.

### 3.1 MacBook or MacBook Pro 13" (Unibody 2008/2009), with or without a removable battery - Disassembly (continued)

⑦



⑧



On the left side of the optical drive, between the fan and the orange ribbon cable you will see a black cable attached to the logic board. You need to disconnect this cable to expose a screw below it - this is a delicate cable, so you need to be careful when disconnecting it.

Disconnect the cable by sliding it directly towards the optical drive.

Remove the Phillips screw below.



### 3.1 MacBook or MacBook Pro 13" (Unibody 2008/2009), with or without a removable battery - Disassembly (continued)

⑨

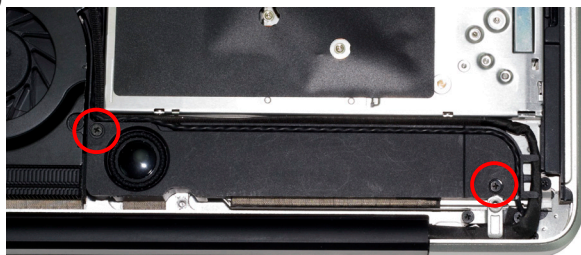


Above the cable you removed in step 7 you will see an orange or black ribbon cable that connects to the optical drive. You need to lift up gently on the cable using a fingernail to release it from the connector on the logic board.

**Use caution while performing this step!**

The cable is thin and fragile. Section 4.2 has detailed instructions on using a business card to help remove this delicate cable.

⑩



At the top of the optical drive you will see a speaker that has a wire running through a channel on it. Remove the 2 Phillips screws securing this to the chassis and gently lift the speaker away from the optical drive. You will not be removing it from the computer - it will stay attached. Don't worry if the cable comes out of the channel; you can just press it back in.



### 3.1 MacBook or MacBook Pro 13" (Unibody 2008/2009), with or without a removable battery - Disassembly (continued)

11

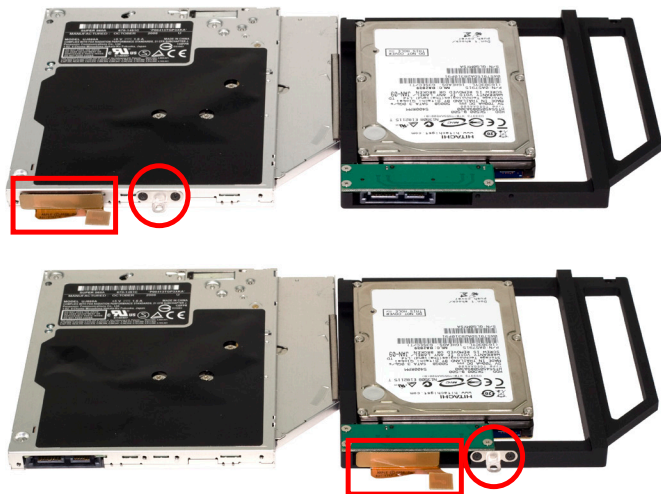


Once you have the final screws removed and the black speaker housing loosened, you can lift up on the optical drive from the area near the ribbon cable and gently wiggle it out of the chassis.

#### Some important notes:

- The ribbon cable is very delicate and easily catches on wires or the logic board itself. You need to make certain it is not being caught on anything as you remove the optical drive from the chassis. Do not tear the cable or you will ruin it! See Section 4.2 for more information about this cable.
- Be aware that the silver bracket (the one you removed the Phillips screw from) is easy to catch on wires as you remove the optical drive from the bay. Be careful to not catch it on any as you take the drive out.

### 3.2 MacBook or MacBook Pro 13" (Unibody 2008/2009), with or without a removable battery - Bracket & Cable Transfer



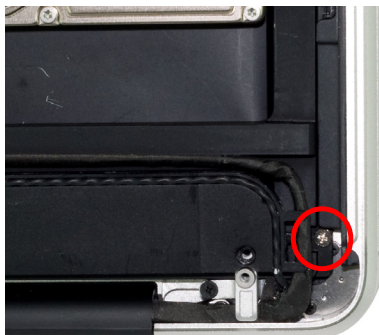
Place the optical drive you removed from your laptop and the hard drive that you already installed into the OWC Data Doubler bracket on the table in front of you as shown.

You need to transfer the ribbon cable from the optical drive to the OWC Data Doubler bracket. Simply use your fingernail to gently wiggle the cable out of the connector, pulling straight towards you. Once removed, plug the cable into the OWC Data Doubler bracket's green interposer board.

Then, remove the silver bracket that is attached to the back of the optical drive and transfer it to the OWC Data Doubler bracket. Make certain the orientation of the bracket is the same - the position of the hole is important to fit properly. Use the same screws as you removed from the optical drive to fasten the silver bracket into the OWC Data Doubler drive bracket.

### 3.3 MacBook or MacBook Pro 13" (Unibody 2008/2009), with or without a removable battery - Installation

①



Install the OWC Data Doubler bracket by reversing the disassembly process.

When placing the OWC Data Doubler bracket into the computer, be cautious of the wires and especially the ribbon cable attached to the back of the optical drive, it is fragile.

The only difference between disassembly and assembly is that the 2 screws on the right side of the bracket need to be changed from the short, black screws that originally were used to 2 longer screws that are included in the OWC Data Doubler kit.

Tighten all screws snugly.

3.3 MacBook or MacBook Pro 13" (Unibody 2008/2009), with or without a removable battery - Installation (continued)

②



Here you see the OWC Data Doubler bracket inserted into the optical drive bay. 3 screws are inserted but the ribbon cable is not attached to the logic board yet, and the black cable is not plugged in either. Make certain all wires are routed where they originally were before replacing the bottom cover.

Firmly connect the ribbon cable and the black cable.

You're all set!

### 3.4 MacBook Pro 13" (Unibody 2010/2011) - Disassembly

Begin by making sure that your computer is fully shut down.

①



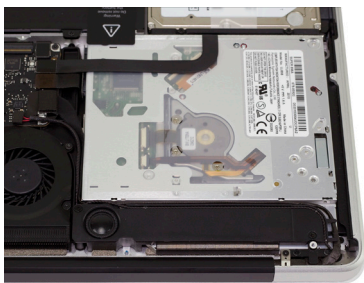
Remove the 10 screws that secure the bottom cover onto the laptop, using a Phillips P0 screwdriver.

Note that the top right 3 screws are much longer and will need to be replaced back to the same locations. There are only 2 types of screw used on the bottom cover, so you do not need to keep them in the same positions.

Once you have the screws removed, place your fingers at the top of the bottom cover near the black vent underneath the screen, and lift to release the bottom cover. There are 2 snap clips on the bottom cover that will release when you lift it off. Set the bottom cover aside.

### 3.4 MacBook Pro 13" (Unibody 2010/2011) - Disassembly (continued)

②

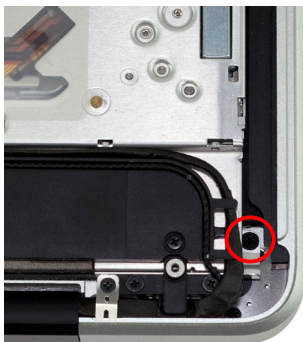


After you've taken the bottom cover off of the computer, you will see the optical drive that you will need to remove to install the OWC Data Doubler.

Turn the computer around so that the optical drive is closer to you. The next steps will have the computer oriented in this direction and all pictures will reflect this setup.

### 3.4 MacBook Pro 13" (Unibody 2010/2011) - Disassembly (continued)

③



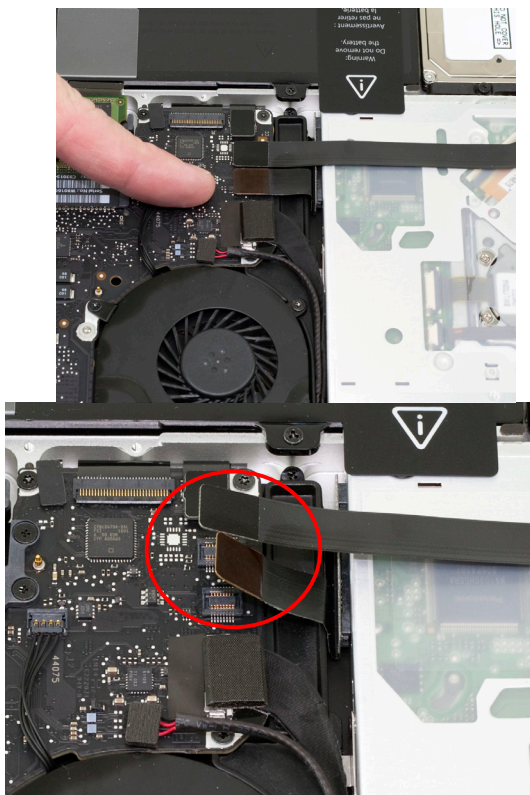
Beginning on the right side of the optical drive (the side closest to the outside edge of the laptop), remove the 2 Philips screws circled in red.

You will not be reusing these screws, but rather be replacing them with longer ones from your included screws when re-assembling. These are the only two screws you will not reuse during the assembly.



### 3.4 MacBook Pro 13" (Unibody 2010/2011) - Disassembly (continued)

④



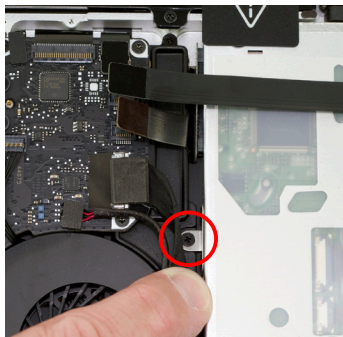
On the left side of the optical drive, between the fan and the battery you will see two black cables attached to the logic board. You need to lift up gently on the cables using a fingernail to release them from their connectors on the logic board. See Section 4.2 for more information about the cable.

Use caution while performing this step, the cables are thin and fragile.



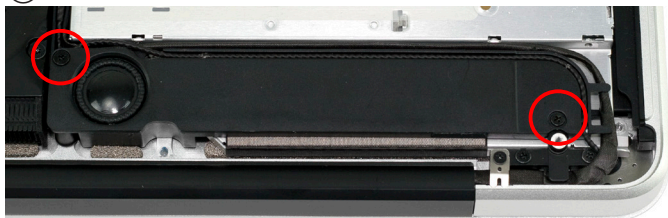
### 3.4 MacBook Pro 13" (Unibody 2010/2011) - Disassembly (continued)

⑤



On the left side of the optical drive, between the fan and the ribbon cables there is a metal bracket attached to the optical drive with a small Phillips screw. Remove the Phillips screw, being careful to not damage the small cable that is directly in between the logic board and the optical drive.

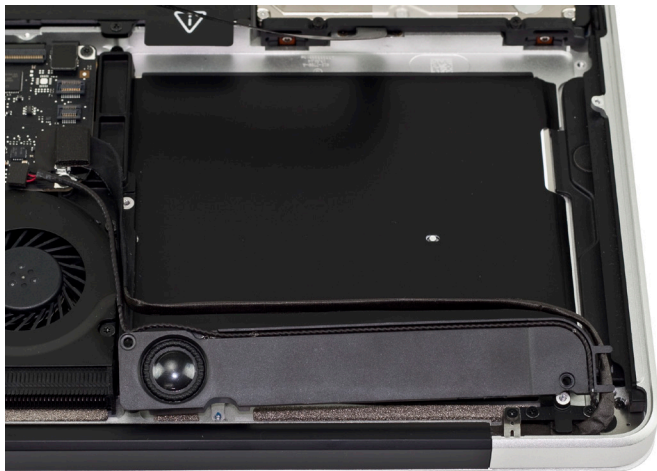
⑥



At the rear of the optical drive bay there is a black speaker assembly that has 2 Phillips screws that attach it to the chassis. Remove the 2 screws, noting that one is substantially longer than the other.

### 3.4 MacBook Pro 13" (Unibody 2010/2011) - Disassembly (continued)

⑦

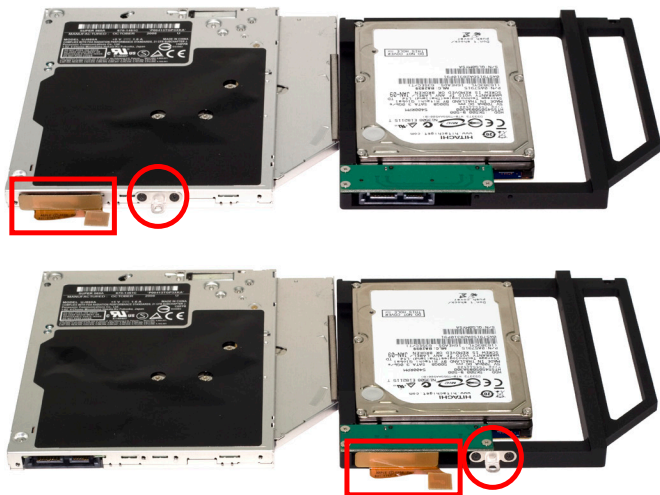


Once you have the final screws removed and the black speaker housing loosened, you can lift up on the optical drive from the area near the ribbon cable and gently wiggle it out of the chassis.

#### Some important notes:

- The ribbon cable is very delicate and easily catches on wires or the logic board itself. You need to make certain it is not being caught on anything as you remove the optical drive from the chassis. The cable is thin and fragile. Section 4.2 has detailed instructions on using a business card to help remove this delicate cable.
- Be aware that the silver bracket (the one you removed the Phillips screw from) is easy to catch on wires as you remove the optical drive from the bay. Be careful to not catch it on any as you take the drive out.

### 3.5 MacBook Pro 13" (Unibody 2010/2011) - Bracket & Cable Transfer



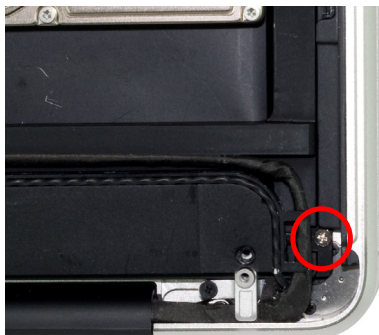
Place the optical drive you removed from your laptop and the hard drive that you already installed into the OWC Data Doubler bracket on the table in front of you as shown.

You need to transfer the ribbon cable from the optical drive to the OWC Data Doubler bracket. Simply use your finger-nail to gently wiggle the cable out of the connector, pulling straight towards you. Once removed, plug the cable into the OWC Data Doubler bracket's green interposer board.

Then, remove the silver bracket that is attached to the back of the optical drive and transfer it to the OWC Data Doubler bracket. Make certain the orientation of the bracket is the same - the position of the hole is important to fit properly. Use the same screws as you removed from the optical drive to fasten the silver bracket into the OWC Data Doubler drive bracket.

### 3.6 MacBook Pro 13" (Unibody 2010/2011) - Assembly

①



Install the OWC Data Doubler bracket by reversing the disassembly process.

When placing the OWC Data Doubler bracket into the computer, be cautious of the wires and especially the ribbon cable attached to the back of the optical drive, it is fragile.

The only difference between disassembly and assembly is that the 2 screws on the right side of the bracket need to be changed from the short, black screws that originally were used to 2 longer screws that are included in the OWC Data Doubler kit.

Tighten all screws snugly.

**3.6 MacBook Pro 13" (Unibody 2010/2011) - Assembly** (continued)

②



Here you see the OWC Data Doubler bracket inserted into the optical drive bay.

Place the speaker assembly back into the chassis and replace the 2 screws you removed from it.

Replace the screw from the drive bracket using the small black screw you removed from it.

Attach the 2 ribbon cables back onto the logic board.

You're all set!

### 3.7 MacBook Pro 13" (Unibody 2011/2012) - Disassembly

Begin by making sure that your computer is fully shut down.

①



Remove the 10 screws that secure the bottom cover onto the laptop, using a Phillips P0 screwdriver.

Note that the top right 3 screws are much longer and will need to be replaced back to the same locations. There are only 2 types of screw used on the bottom cover, so you do not need to keep them in the same positions.

Once you have the screws removed, place your fingers at the top of the bottom cover near the black vent underneath the screen, and lift to release the bottom cover. There are 2 snap clips on the bottom cover that will release when you lift it off. Set the bottom cover aside.

**3.7 MacBook Pro 13" (Unibody 2011/2012) - Disassembly**

(continued)

②



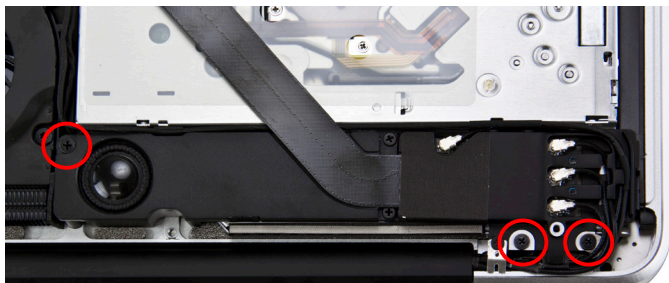
After you've taken the bottom cover off of the computer, you will see the optical drive that you will need to remove to install the OWC Data Doubler.

Turn the computer around so that the optical drive is closer to you. The next steps will have the computer oriented in this direction and all pictures will reflect this setup.

## 3.7 MacBook Pro 13" (Unibody 2011/2012) - Disassembly

(continued)

③



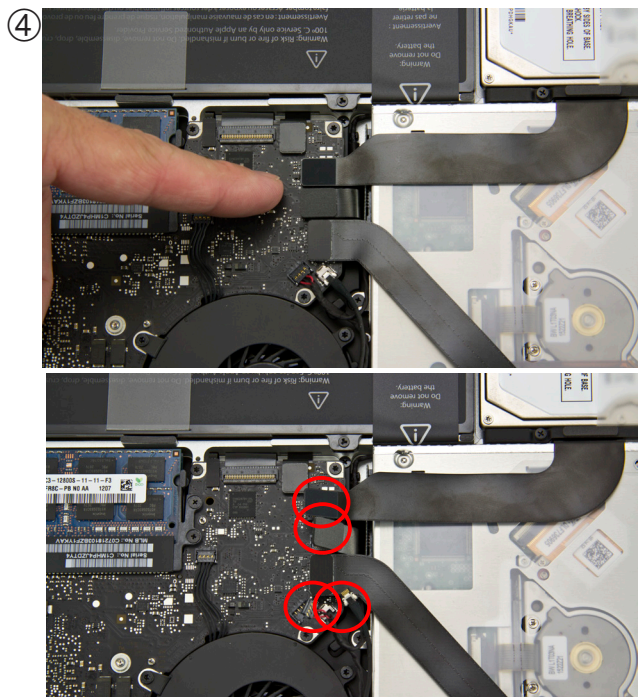
At the rear of the optical drive bay there is a black speaker assembly that has 3 Phillips screws that attach it to the chassis. Remove the 3 screws.

Once the 3 screws are removed, you can gently lift up on the speaker housing to dislodge it from it's mounting posts. You are not removing it, but rather loosening it to allow the optical drive to be removed. The cables that come off of it are still attached, so don't try and lift it up much, you will do that in a later step.



## 3.7 MacBook Pro 13" (Unibody 2011-2012) - Disassembly

(continued)



On the left side of the optical drive, between the fan and the battery you will see two black cables attached to the logic board. You need to lift up gently on the cables using a fingernail to release them from their connectors on the logic board. See Section 4.2 for more information about the cable.

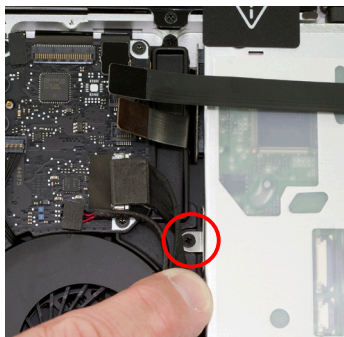
Below the 2 black cables, are a flat black cable with red wires and a silver plug in cable. You will need to disconnect these as well. Lift up on the red cable, and pull the silver cable out.

Use caution while performing this step, the cables are thin and fragile.

### 3.7 MacBook Pro 13" (Unibody 2011/2012) - Disassembly

(continued)

⑤



On the left side of the optical drive, between the fan and the ribbon cables there is a metal bracket attached to the optical drive with a small Phillips screw. Remove the Phillips screw, being careful to not damage the small cable that is directly in between the logic board and the optical drive.

⑥



Gently lift the Airport cable assembly up and away from the corner of the computer to expose a Phillips screw that secures the optical drive into the chassis. Remove it.

3.7 MacBook Pro 13" (Unibody 2011/2012) - Disassembly  
(continued)

⑦ On the right side of the optical drive (the side closest to the outside edge of the laptop), remove the 2 Phillips screws circled in red.

You will not be reusing these screws, but rather be replacing them with longer ones from your included screws when reassembling. These are the only two screws you will not reuse during the assembly.



⑧ Gently lift the optical drive out of the bay, being very careful not to damage any cables in the process. The hard drive cable can be straightened up vertically as shown in this picture.

### 3.8 MacBook Pro 13" (Unibody 2011/2012) - Bracket & Cable Transfer

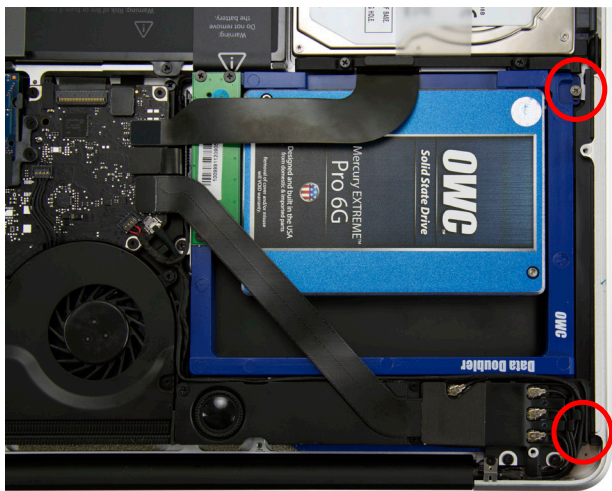


Place the optical drive you removed from your laptop and the hard drive that you already installed into the OWC Data Doubler bracket on the table in front of you as shown.

You need to transfer the ribbon cable from the optical drive to the OWC Data Doubler bracket. Simply use your finger-nail to gently wiggle the cable out of the connector, pulling straight towards you. Once removed, plug the cable into the OWC Data Doubler bracket's green interposer board.

Then, remove the silver bracket that is attached to the back of the optical drive and transfer it to the OWC Data Doubler bracket. Make certain the orientation of the bracket is the same - the position of the hole is important to fit properly. Use the same screws as you removed from the optical drive to fasten the silver bracket into the OWC Data Doubler drive bracket.

### 3.9 MacBook Pro 13" (Unibody 2011/2012) - Assembly



Install the OWC Data Doubler bracket by reversing the disassembly process.

When placing the OWC Data Doubler bracket into the computer, be cautious of the wires and especially the ribbon cable attached to the back of the optical drive, it is fragile.

The only difference between disassembly and assembly is that the 2 screws on the right side (circled in red) of the bracket need to be changed from the short, black screws that originally were used to 2 longer screws that are included in the OWC Data Doubler kit.

Tighten all screws and cables snugly.

### 3.10 MacBook or MacBook Pro 15" (Unibody 2008/2009), with or without a removable battery - Disassembly

Begin by making sure that your computer is fully shut down.

If you have a MacBook Pro 15" with a removable battery follow step 1, 2 and 3; if you have a MacBook Pro 15" with a non-removable battery, please proceed to step 4.

①



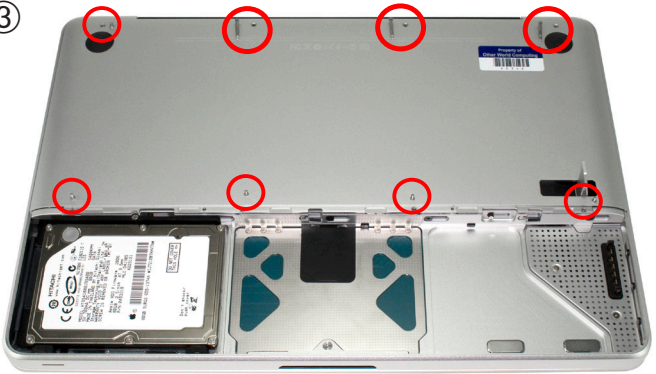
②



Remove the battery cover from your laptop by lifting the release lever and taking the metal cover off.

### 3.10 MacBook or MacBook Pro 15" (Unibody 2008/2009), with or without a removable battery - Disassembly (continued)

③



Take the battery out of the laptop and set it aside.

Remove the 8 screws that secure the bottom cover to the laptop, using a Phillips P0 screwdriver.

Note that the top right 3 screws are much longer and will need to be replaced back to the same locations. There are only 2 types of screw used on the bottom cover, so you do not need to keep them in the same positions.

Once you have the screws removed, place your fingers at the top of the bottom cover near the black vent underneath the screen, and lift to release the bottom cover. There are 2 snap clips on the bottom cover that will release when you lift it off. Set the bottom cover aside.

Proceed to step 5



### 3.10 MacBook or MacBook Pro 15" (Unibody 2008/2009), with or without a removable battery - Disassembly (continued)

④



Remove the 10 screws that secure the bottom cover onto the laptop using a Phillips P0 screwdriver.

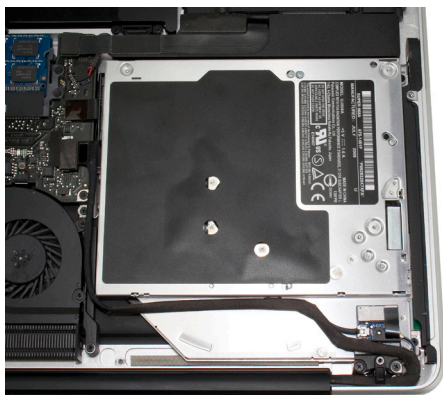
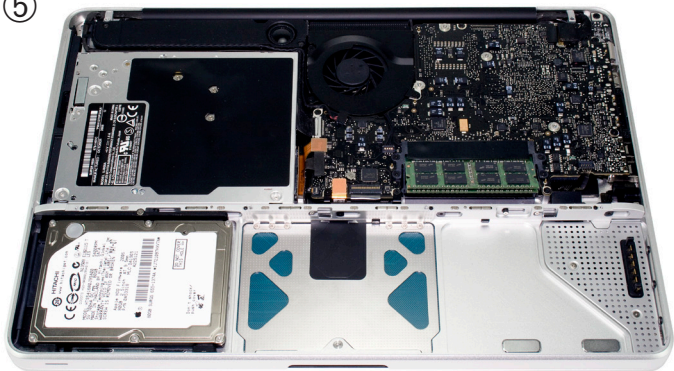
Note that the top right 3 screws are much longer and will need to be replaced back to the same locations. There are only 2 types of screw used on the bottom cover, so you do not need to keep them in the same positions.

Once you have the screws removed, place your fingers at the top of the bottom cover near the black vent underneath the screen, and lift to release the bottom cover. There are 2 snap clips internal on the bottom cover that will release when you lift it off. Set the bottom cover aside.



### 3.10 MacBook or MacBook Pro 15" (Unibody 2008/2009), with or without a removable battery - Disassembly (continued)

⑤

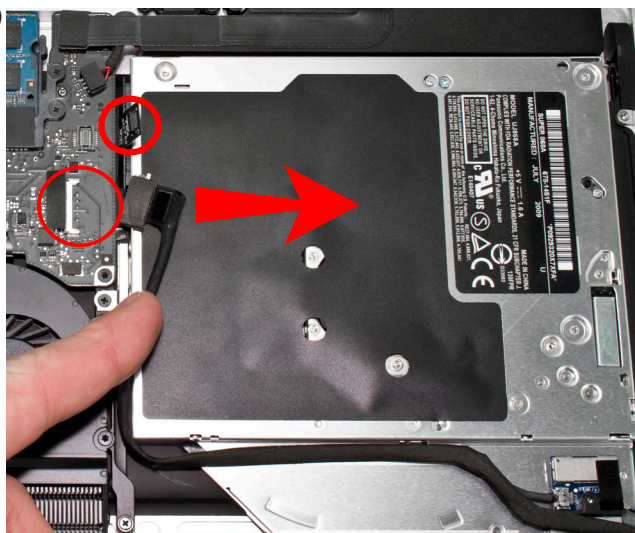


After you've taken the bottom cover off of the computer, you will see the optical drive that we will need to remove to install the OWC Data Doubler.

Turn the computer around so that the optical drive is closer to you. The next steps will have the computer oriented in this direction and all pictures will reflect this setup.

### 3.10 MacBook or MacBook Pro 15" (Unibody 2008/2009), with or without a removable battery - Disassembly (continued)

⑥



On the left side of the optical drive, you will see a black cable attached to the logic board. You need to disconnect this cable to expose a screw below it - this is a delicate cable and you need to be careful when disconnecting it.

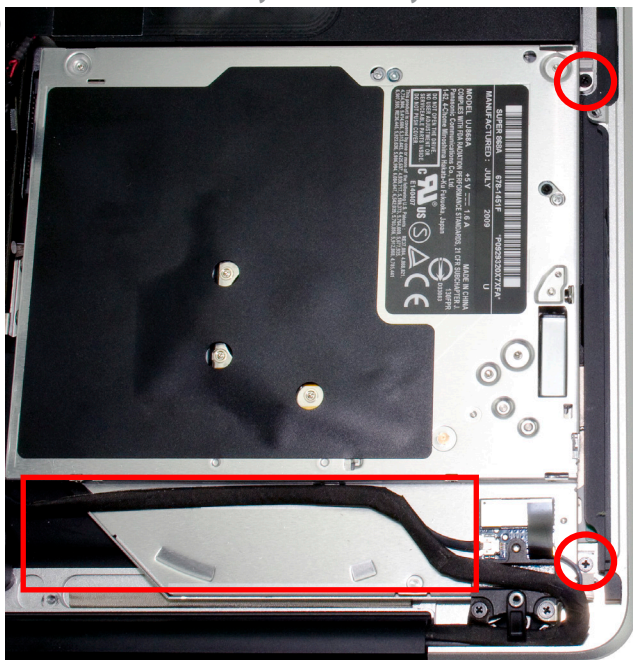
Slide it directly towards the optical drive to disconnect it. Once you have the cable out of the way, you will see a black screw inserted through a silver bracket that is attached to the back of the optical drive. Remove the Phillips screw.

Above the cable you just disconnected you will see an orange or black ribbon cable that connects to the optical drive. You need to lift up gently on the cable using a finger-nail to release it from the connector on the logic board.

The cable is thin and fragile. Section 4.2 has detailed instructions on using a business card to help remove this delicate cable.

### 3.10 MacBook or MacBook Pro 15" (Unibody 2008/2009), with or without a removable battery - Disassembly (continued)

⑥

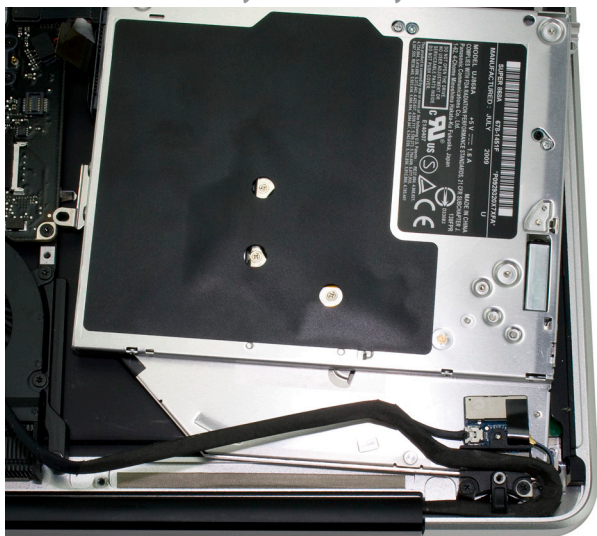


On the right side of the optical drive you will see 2 small black screws that are securing the optical drive into the chassis of the computer. Remove these two screws - you will NOT be reusing them, rather you will be attaching the OWC Data Doubler bracket using 2 longer screws in a future step.

Also there is a black cable that is attached to the optical drive via a glue strip. You need to gently disconnect the wire bundle from the optical drive so it will come out of the computer. Work from the left to the right, to avoid disconnecting the wire from a connector that is just to the right of the red box above - if you do disconnect it it's simple to reinsert it upon reassembly.

### 3.10 MacBook or MacBook Pro 15" (Unibody 2008/2009), with or without a removable battery - Disassembly (continued)

⑦

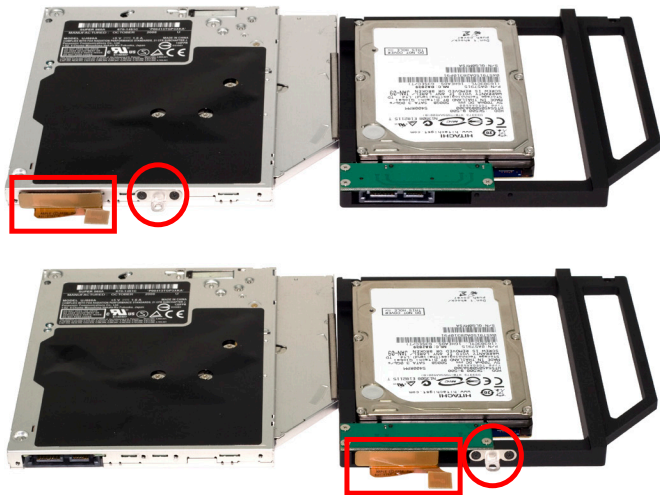


Once you have the final screws removed and wire bundle and it's adhesive loosened, you can lift up on the optical drive from the area near the ribbon cable and gently wiggle it out of the chassis.

#### **Some important notes:**

- The ribbon cable is very delicate and easily catches on wires or the logic board itself. You may need to make certain it is not being caught on anything as you remove it from the chassis. The cable is thin and fragile. Section 4.2 has detailed instructions on using a business card to help remove this delicate cable.
- The bracket near the ribbon cable is easy to catch on any wires that are near it, just use caution when removing the optical drive and be aware of that bracket.

### 3.11 MacBook or MacBook Pro 15" (Unibody 2008/2009), with or without a removable battery - Bracket & Cable Transfer

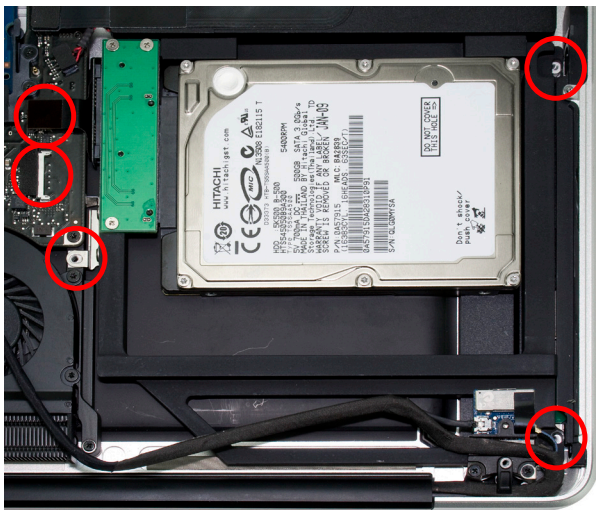


Place the optical drive you removed from your laptop and the hard drive that you already installed into the OWC Data Doubler bracket on the table in front of you as shown.

You need to transfer the ribbon cable from the optical drive onto the OWC Data Doubler bracket. Simply use your fingernail to gently wiggle the cable out of the connector, pulling straight towards you. Once removed, plug it into the OWC Data Doubler bracket's green interposer board.

Then, remove the silver bracket that is sticking out the back of the optical drive and transfer it to the OWC Data Doubler drive bracket. Make certain the orientation of the bracket is the same - the position of the hole is important to fit properly. Use the same screws as you removed from the optical drive to fasten the silver bracket into the OWC Data Doubler drive bracket.

### 3.12 MacBook or MacBook Pro 15" (Unibody 2008/2009), with or without a removable battery - Installation



Installation of the OWC Data Doubler bracket with it's hard drive is the opposite of the disassembly process.

When placing the OWC Data Doubler bracket into the computer, be cautious of the wires and especially the ribbon cable attached to the back of the optical drive, it is fragile.

The only difference between disassembly and assembly are the 2 screws on the right side of the bracket need to be changed from the short, black screws that originally were used, to 2 longer screws that are included with the contents of the kit.

Tighten all screws snugly. Attach the ribbon cable and the black cable with the adhesive, tucking it into the edge of the OWC Data Doubler, letting it's adhesive hold it in place.

You're all set!



### 3.13 MacBook Pro 15" (Unibody 2010/2011) - Disassembly

Begin by making sure that your computer is fully shut down.

①



Remove the 10 screws that secure the bottom cover onto the laptop using a Phillips P0 screwdriver.

Note that the top right 3 screws are much longer and will need to be replaced back to the same locations. There are only 2 types of screw used on the bottom cover, so you do not need to keep them in the same positions.

Once you have the screws removed, place your fingers at the top of the bottom cover near the black vent underneath the screen, and lift to release the bottom cover. There are 2 snap clips internal on the bottom cover that will release when you lift it off. Set the bottom cover aside.

**3.13 MacBook Pro 15" (Unibody 2010/2011) - Disassembly** (continued)

②



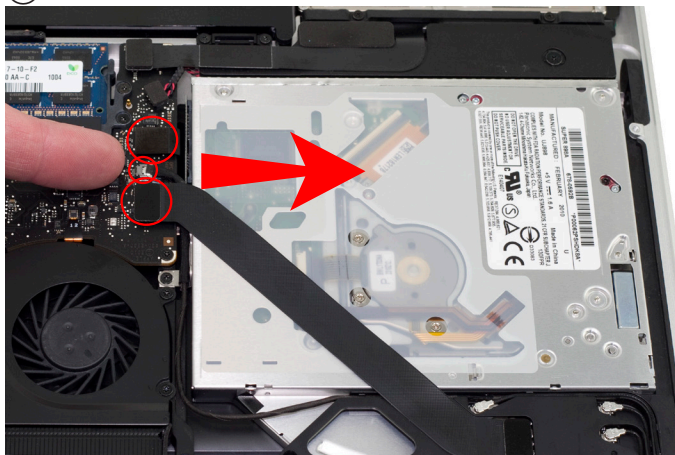
After you've taken the bottom cover off of the computer, you will see the optical drive that we will need to remove to install the OWC Data Doubler.

Turn the computer around so that the optical drive is closer to you. The next steps will have the computer oriented in this direction and all pictures will reflect this setup.



**3.13 MacBook Pro 15" (Unibody 2010/2011) - Disassembly** (continued)

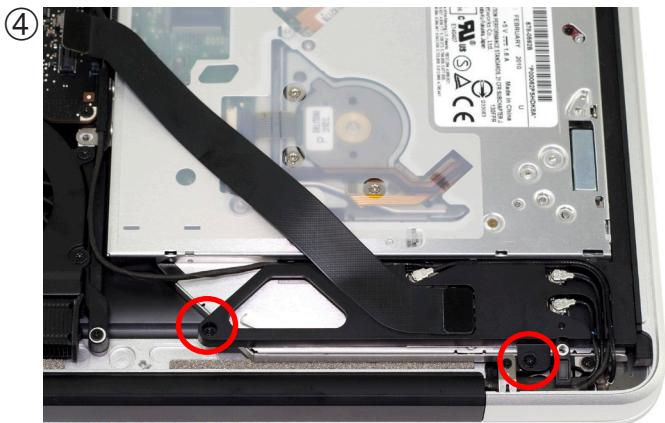
③



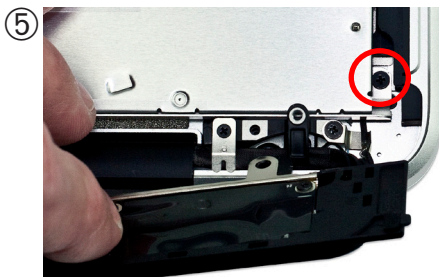
On the left side of the optical drive, you will see a two ribbon cables that are attached to the logic board with a small silver cable between them. You have to remove the small silver cable from the logic board. This is a delicate cable and it takes care to not damage it. Using your fingernail, gently pull the cable out of it's socket, towards the optical drive to release it.

Above and below the cable you just disconnected you will see an 2 black ribbon cables. One connects to the optical drive, and one connects to the hard drive. You need to lift up gently on the cable connector using a fingernail to release it from the connector on the logic board. Do this for both cables.

The optical drive cable is thin and fragile. Section 4.2 has detailed instructions on using a business card to help remove this delicate cable.

**3.13 MacBook Pro 15" (Unibody 2010/2011) - Disassembly** (continued)

At the rear of the optical drive you will see an aluminum bracket that has a flexible ribbon cable and 3 Airport / Bluetooth antennas going into it. You need to release this bracket to access a screw underneath it, and also allow the optical drive to come out. Remove the 2 Phillips screws that are circled in red here. Note that one screw is substantially longer than the other.



Once you have removed the bracket, the Phillips screw circled here needs to be removed.

You will NOT be reusing this screw, rather you will be attaching the OWC Data Doubler bracket using a longer screw in a future step.

**3.13 MacBook Pro 15" (Unibody 2010/2011) - Disassembly** (continued)**⑥**

At the top right of the optical drive, you will see another small Phillips screw that needs to be removed.

As before, you will NOT be reusing this screw, rather you will be attaching the OWC Data Doubler bracket using a longer screw in a future step.

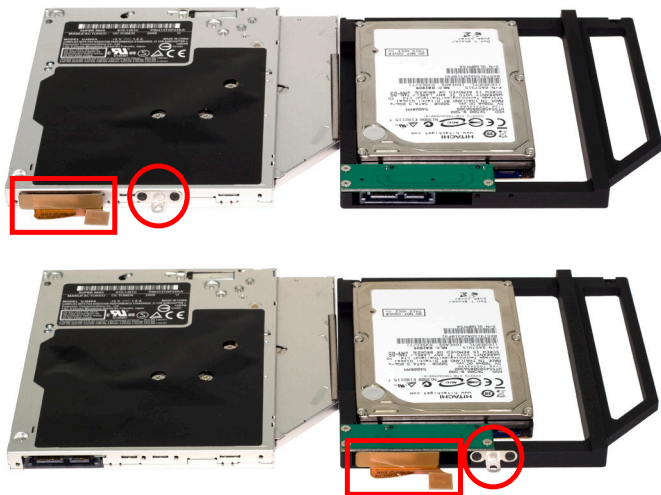


Once you have the final screws removed and the bracket with the antennas attached loosened, you can lift up on the optical drive from the area near the ribbon cable and gently wiggle it out of the chassis.

**Some important notes:**

- The ribbon cable is very delicate and easily catches on wires or the logic board itself. You need to make certain it is not being caught on anything as you remove the optical drive from the chassis. The cable is thin and fragile. Section 4.2 has detailed instructions on using a business card to help remove this delicate cable.
- Be aware that the silver bracket (the one you removed the Phillips screw from) is easy to catch on wires as you remove the optical drive from the bay. Be careful to not catch it on any as you take the drive out.

### 3.14 MacBook Pro 15" (Unibody 2010/2011) - Bracket & Cable Transfer

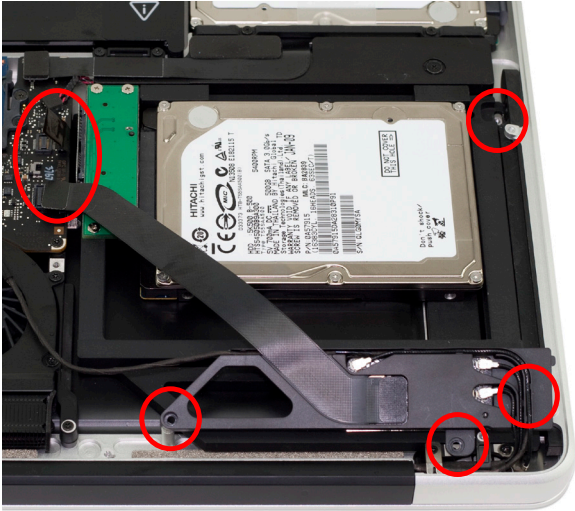


Place the optical drive you removed from your laptop and the hard drive that you already installed into the OWC Data Doubler bracket on the table in front of you as shown.

You need to transfer the ribbon cable from the optical drive onto the OWC Data Doubler bracket. Simply use your finger-nail to gently wiggle the cable out of the connector, pulling straight towards you. Once removed, plug it into the OWC Data Doubler bracket's green interposer board.

Then, remove the silver bracket that is sticking out the back of the optical drive and transfer it to the OWC Data Doubler drive bracket. Make certain the orientation of the bracket is the same - the position of the hole is important to fit properly. Use the same screws as you removed from the optical drive to fasten the silver bracket into the OWC Data Doubler drive bracket.

### 3.15 MacBook Pro 15" (Unibody 2010/2011) - Installation



Installation of the OWC Data Doubler bracket with it's hard drive is the opposite of the disassembly process.

When placing the OWC Data Doubler bracket into the computer, be cautious of the wires and especially the ribbon cable attached to the back of the optical drive, it is fragile.

The only difference between disassembly and assembly are the 2 screws on the right side of the bracket need to be changed from the short, black screws that originally were used, to 2 longer screws that are included with the contents of the kit.

Tighten all screws snugly. Attach the ribbon cables and the small silver cable, tucking it back between the drive bracket and the logic board.

You're all set!

### 3.16 MacBook Pro 15" (Unibody 2011/2012) - Disassembly

Begin by making sure that your computer is fully shut down.

①



Remove the 10 screws that secure the bottom cover onto the laptop using a Phillips P0 screwdriver.

Note that the top right 3 screws are much longer and will need to be replaced back to the same locations. There are only 2 types of screw used on the bottom cover, so you do not need to keep them in the same positions.

Once you have the screws removed, place your fingers at the top of the bottom cover near the black vent underneath the screen, and lift to release the bottom cover. There are 2 snap clips internal on the bottom cover that will release when you lift it off. Set the bottom cover aside.

**3.16 MacBook Pro 15" (Unibody 2011/2012) - Disassembly** (continued)

②



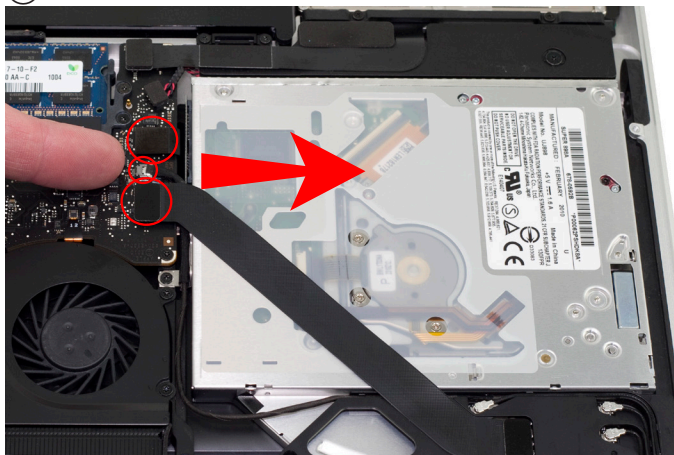
After you've taken the bottom cover off of the computer, you will see the optical drive that we will need to remove to install the OWC Data Doubler.

Turn the computer around so that the optical drive is closer to you. The next steps will have the computer oriented in this direction and all pictures will reflect this setup.



**3.16 MacBook Pro 15" (Unibody 2011/2012) - Disassembly** (continued)

③

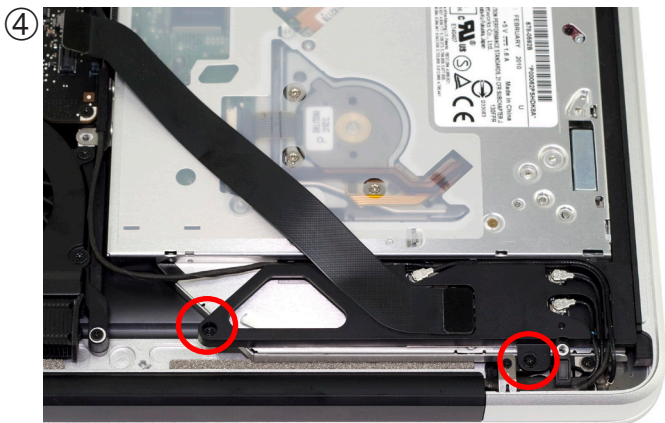


On the left side of the optical drive, you will see a two ribbon cables that are attached to the logic board with a small silver cable between them. You have to remove the small silver cable from the logic board. This is a delicate cable and it takes care to not damage it. Using your fingernail, gently pull the cable out of it's socket, towards the optical drive to release it.

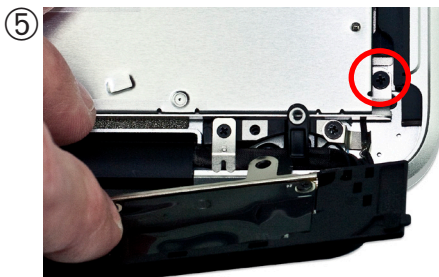
Above and below the cable you just disconnected you will see an 2 black ribbon cables. One connects to the optical drive, and one connects to the hard drive. You need to lift up gently on the cable connector using a fingernail to release it from the connector on the logic board. Do this for both cables.

The optical drive cable is thin and fragile. Section 4.2 has detailed instructions on using a business card to help remove this delicate cable.



**3.16 MacBook Pro 15" (Unibody 2011/2012) - Disassembly** (continued)

At the rear of the optical drive you will see an aluminum bracket that has a flexible ribbon cable and 3 Airport / Bluetooth antennas going into it. You need to release this bracket to access a screw underneath it, and also allow the optical drive to come out. Remove the 2 Phillips screws that are circled in red here. Note that one screw is substantially longer than the other.



Once you have removed the bracket, the Phillips screw circled here needs to be removed.

You will NOT be reusing this screw, rather you will be attaching the OWC Data Doubler bracket using a longer screw in a future step.

**3.16 MacBook Pro 15" (Unibody 2011/2012) - Disassembly** (continued)**⑥**

At the top right of the optical drive, you will see another small Phillips screw that needs to be removed.

As before, you will NOT be re-using this screw, rather you will be attaching the OWC Data Doubler bracket using a longer screw in a future step.



Once you have the final screws removed and the bracket with the antennas attached loosened, you can lift up on the optical drive from the area near the ribbon cable and gently wiggle it out of the chassis.

**Some important notes:**

- The ribbon cable is very delicate and easily catches on wires or the logic board itself. You need to make certain it is not being caught on anything as you remove the optical drive from the chassis. The cable is thin and fragile. Section 4.2 has detailed instructions on using a business card to help remove this delicate cable.
- Be aware that the silver bracket (the one you removed the Phillips screw from) is easy to catch on wires as you remove the optical drive from the bay. Be careful to not catch it on any as you take the drive out.

### 3.17 MacBook Pro 15" (Unibody 2011/2012) - Bracket & Cable Transfer

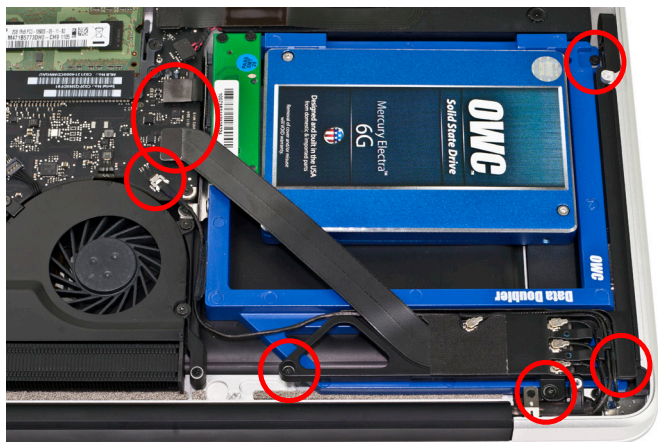


Place the optical drive you removed from your laptop and the hard drive that you already installed into the OWC Data Doubler bracket on the table in front of you as shown.

You need to transfer the ribbon cable from the optical drive onto the OWC Data Doubler bracket. Simply use your fingernail to gently wiggle the cable out of the connector, pulling straight towards you. Once removed, plug it into the OWC Data Doubler bracket's green interposer board.

Then, remove the silver bracket that is sticking out the back of the optical drive and transfer it to the OWC Data Doubler drive bracket. Make certain the orientation of the bracket is the same - the position of the hole is important to fit properly. Use the same screws as you removed from the optical drive to fasten the silver bracket into the OWC Data Doubler drive bracket.

### 3.18 MacBook Pro 15" (Unibody 2011/2012) - Installation



Installation of the OWC Data Doubler bracket with it's hard drive is the opposite of the disassembly process.

When placing the OWC Data Doubler bracket into the computer, be cautious of the wires and especially the ribbon cable attached to the back of the optical drive, it is fragile.

The only difference between disassembly and assembly are the 2 screws on the right side of the bracket need to be changed from the short, black screws that originally were used, to 2 longer screws that are included with the contents of the kit.

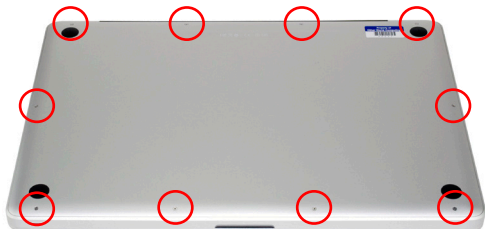
Tighten all screws snugly. Attach the ribbon cables and the small silver cable, tucking it back between the drive bracket and the logic board.

You're all set!

### 3.19 MacBook Pro 17" (Unibody 2008/2009) - Disassembly

Begin by making sure that your computer is fully shut down.

①



Remove the 10 screws that secure the bottom cover onto the laptop using a Phillips P0 screwdriver.

Note that the top right 3 screws are much longer and will need to be replaced back to the same locations. There are only 2 types of screw used on the bottom cover, so you do not need to keep them in the same positions.

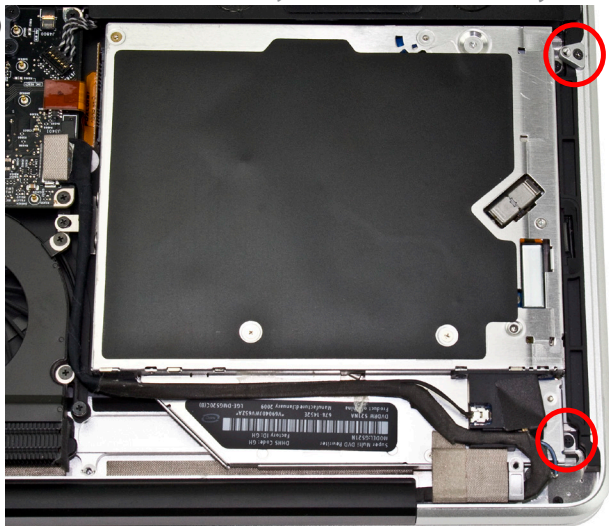
Once you have the screws removed, place your fingers at the top of the bottom cover near the black vent underneath the screen, and lift to release the bottom cover. There are 2 snap clips on the bottom cover that will release when you lift it off. Set the bottom cover aside.

②

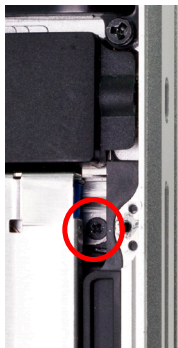


After you've taken the bottom cover off of the computer, you will see the optical drive that we will need to remove to install the OWC Data Doubler.

Turn the computer around so that the optical drive is closer to you. The next steps will have the computer oriented in this direction and all pictures will reflect this setup.

**3.19 MacBook Pro 17" (Unibody 2008/2009) - Disassembly** (continued)**③**

On the right side of the optical drive, you will see 2 small black Phillips screws that need to be removed. The one closest to the corner of the computer is easily accessible and you can remove it now. The screw towards the center of the computer, however, requires the bracket above it to be removed in order to gain access to it.



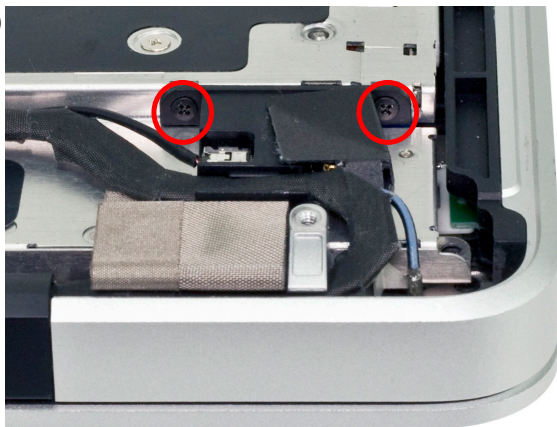
- ④** Using a Torx T8 screwdriver, remove the bracket that is above the Phillips screw you want to remove. Once you have the bracket off remove the Phillips screw.



Both of these Phillips screws you removed will NOT be reused, but rather will be replaced with longer screws in a later step that secures the OWC Data Doubler bracket into the computer.

**3.19 MacBook Pro 17" (Unibody 2008/2009) - Disassembly** (continued)

⑤



Looking from the rear of the laptop, you will see a black plastic bracket that screws into the side of the optical drive. You need to remove two Phillips screws from this bracket to detach it from the optical drive - do so now.

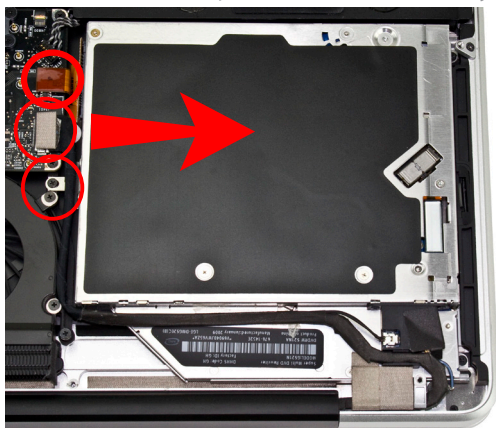
Both of these Phillips screws you removed will NOT be reused, but rather will be replaced with longer screws in a later step that secures the OWC Data Doubler bracket into the computer.

Once you have the bracket disconnected, notice that the black cable bundle that runs along the body of the optical drive is attached via an adhesive. You will need to gently remove the black cable bundle from the body of the optical drive to allow the optical drive to be removed from the chassis of the computer in a future step.



**3.19 MacBook Pro 17" (Unibody 2008/2009) - Disassembly** (continued)

⑥



On the left side of the optical drive, you will see a black cable attached to the logic board. You need to disconnect this cable to expose a screw below it - this is a delicate cable and you need to be careful when disconnecting it.

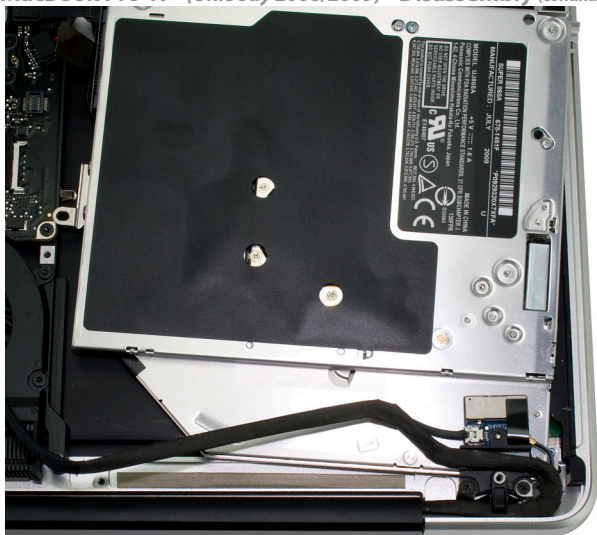
There is a small adhesive-backed black plastic block right between the ribbon cable and the black cable. The block is there to prevent the black cable from being disconnected accidentally. You will need to remove the block from the logic board before proceeding.

Slide the black cable directly towards the optical drive to disconnect it. Once you have the cable out of the way, you will see a black Phillips screw inserted through a silver bracket that is attached to the back of the optical drive. Remove it.

Above the cable you just disconnected you will see an orange or black ribbon cable that connects to the optical drive. You need to lift up gently on the cable using a fingernail to release it from the connector on the logic board. The cable is thin and fragile. Section 4.2 has detailed instructions on using a business card to help remove this delicate cable.



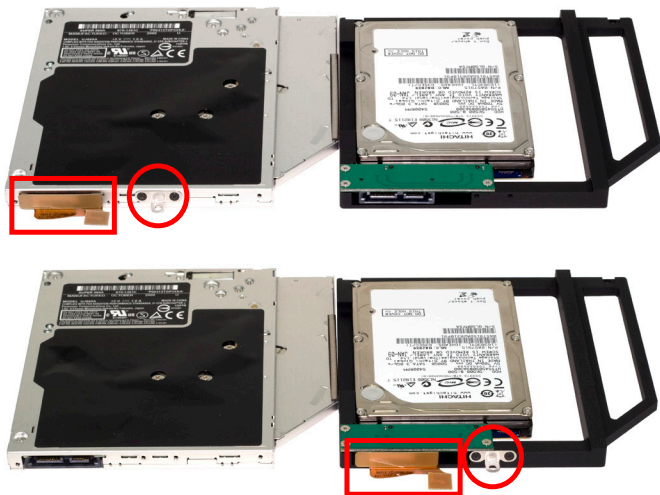
⑦



### Some important notes:

- The ribbon cable is very delicate and easily catches on wires or the logic board itself. You need to make certain the cable is not being caught on anything as you remove it from the chassis. The cable is thin and fragile. Section 4.2 has detailed instructions on using a business card to help remove this delicate cable.
- Be aware that the silver bracket (the one you removed the Phillips screw from) is easy to catch on wires as you remove the optical drive from the bay. Be careful to not catch it on any as you take the drive out.

### 3.20 MacBook Pro 17" (Unibody 2008/2009) - Bracket & Cable Transfer

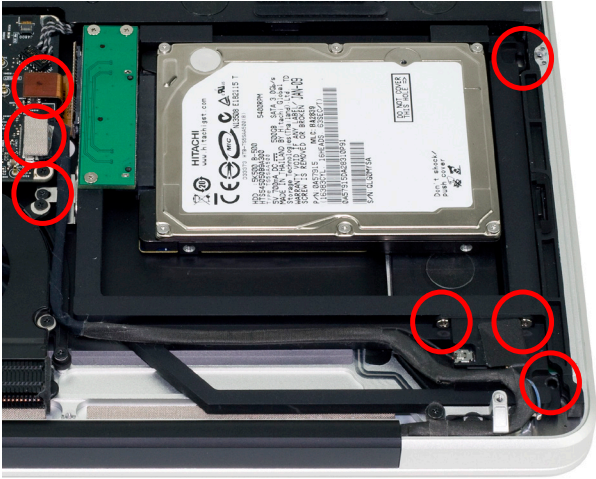


Place the optical drive you removed from your laptop and the hard drive that you already installed into the OWC Data Doubler bracket on the table in front of you as shown.

You need to transfer the ribbon cable from the optical drive onto the OWC Data Doubler bracket. Simply use your finger-nail to gently wiggle the cable out of the connector, pulling straight towards you. Once removed, plug it into the OWC Data Doubler bracket's green interposer board.

Then, remove the silver bracket that is sticking out the back of the optical drive and transfer it to the OWC Data Doubler drive bracket. Make certain the orientation of the bracket is the same - the position of the hole is important to fit properly. Use the same screws as you removed from the optical drive to fasten the silver bracket into the OWC Data Doubler drive bracket.

### 3.21 MacBook Pro 17" (Unibody 2008/2009) - Installation



Installation of the OWC Data Doubler bracket with it's hard drive is the opposite of the disassembly process.

When placing the OWC Data Doubler bracket into the computer, be cautious of the wires and especially the ribbon cable attached to the back of the optical drive, it is fragile.

There are 2 differences between disassembly and assembly. The 2 screws on the right side of the bracket need to be changed from the short, black screws that originally were used, to 2 longer screws that are included in the OWC Data Doubler kit. Also the 2 screws used to secure the plastic bracket are changed to the longer screws that are included.

Tighten all screws snugly. Attach the ribbon cable and the black cable with the adhesive, tucking it into the edge of the OWC Data Doubler. Let its adhesive hold it in place. Place the plastic block you removed from the edge of the black cable back onto the logic board letting it's adhesive hold it down.

You're all set!

### 3.22 MacBook Pro 17" (Unibody 2010/2011) - Disassembly

Begin by making sure that your computer is fully shut down.



Remove the 10 screws that secure the bottom cover onto the laptop using a Phillips P0 screwdriver.

Note that the top right 3 screws are much longer and will need to be replaced back to the same locations. There are only 2 types of screw used on the bottom cover, so you do not need to keep them in the same positions.

Once you have the screws removed, place your fingers at the top of the bottom cover near the black vent underneath the screen, and lift to release the bottom cover. There are 2 snap clips on the bottom cover that will release when you lift it off. Set the bottom cover aside.

②

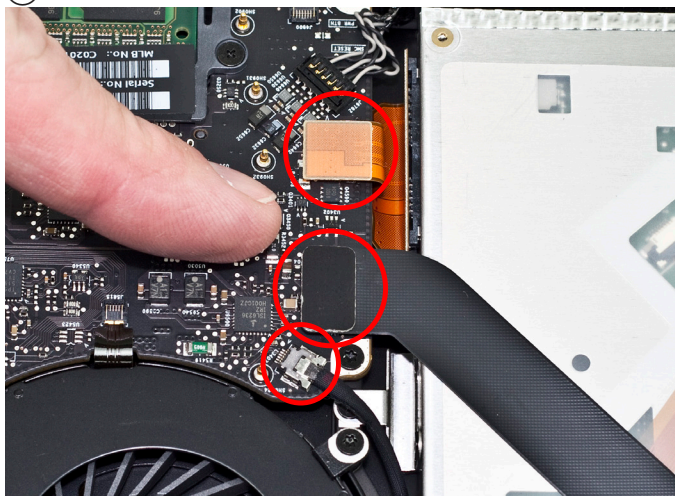


After you've taken the bottom cover off of the computer, you will see the optical drive that we will need to remove to install the OWC Data Doubler.

Turn the computer around so that the optical drive is closer to you. The next steps will have the computer oriented in this direction and all pictures will reflect this setup.

**3.22 MacBook Pro 17" (Unibody 2010/2011) - Disassembly** (continued)

②



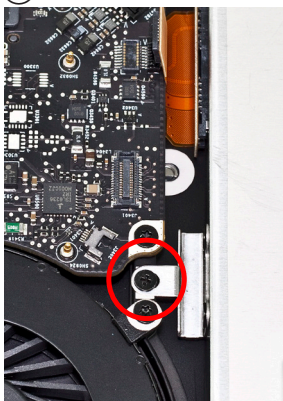
On the left side of the optical drive, you will see a two ribbon cables that are attached to the logic board with a small silver cable below them. You have to remove the small silver cable from the logic board. This is a delicate cable and it takes care to not damage it. Using your fingernail, gently pull the cable out of it's socket, towards the optical drive to release it.

Above the cable you just disconnected you will see a black ribbon cable and orange ribbon cable. One connects to the optical drive, and one connects to the hard drive. You need to lift up gently on the cable connector using a fingernail to release it from the connector on the logic board. Do this for both cables.

The optical drive ribbon cable is thin and fragile. Section 4.2 has detailed instructions on using a business card to help remove this delicate cable.

**3.22 MacBook Pro 17" (Unibody 2010/2011) - Disassembly** (continued)

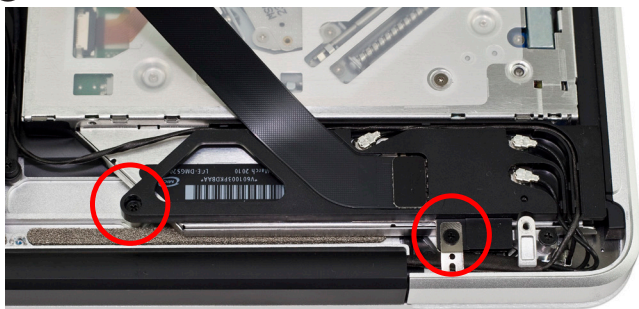
③



Once you have removed the small cable with the silver connector, underneath it you will see a silver metal bracket with a black Philips screw in it that attaches to the back of the optical drive.

You need to remove the black Philips screw.

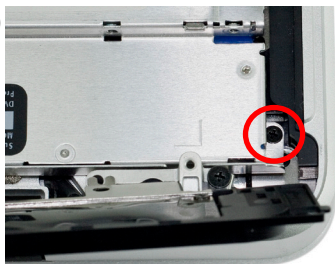
④



At the rear of the optical drive you will see an aluminum bracket that has a flexible ribbon cable and 3 Airport / Bluetooth antennas going into it. You need to release this bracket to access a screw underneath it, and also allow the optical drive to come out. Remove the 2 Phillips screws that are circled in red here. Note that one screw is substantially longer than the other.

**3.22 MacBook Pro 17" (Unibody 2010/2011) - Disassembly** (continued)

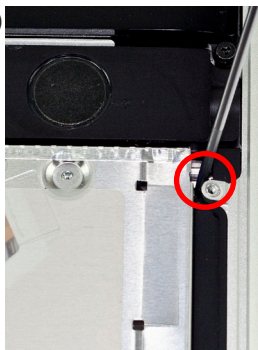
⑤



At the top right of the optical drive, you will see another small Phillips screw that needs to be removed.

You will NOT be reusing the screws from step 5 and 6, rather you will be attaching the OWC Data Doubler bracket using a longer screw in a future step.

⑥



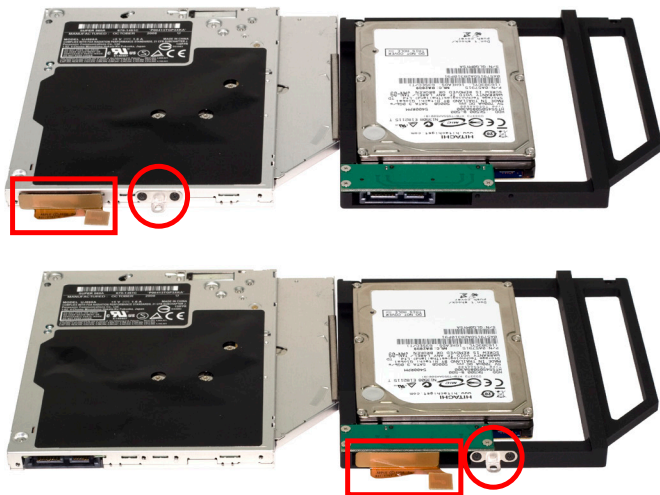
Once you have the final screws removed and the bracket with the antennas attached loosened, you can lift up on the optical drive from the area near the ribbon cable and gently wiggle it out of the chassis.

**Some important notes:**

- The ribbon cable is very delicate and easily catches on wires or the logic board itself. You need to make certain it is not being caught on anything as you remove the optical drive from the chassis. The cable is thin and fragile. Section 4.2 has detailed instructions on using a business card to help remove this delicate cable.
- Be aware that the silver bracket (the one you removed the Phillips screw from) is easy to catch on wires as you remove the optical drive from the bay. Be careful to not catch it on any as you take the drive out.



### 3.23 MacBook Pro 17" (Unibody 2010/2011) - Bracket & Cable Transfer



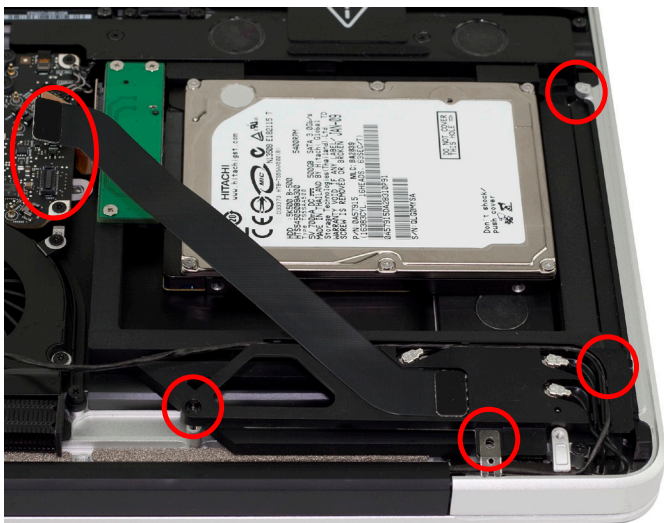
Place the optical drive you removed from your laptop and the hard drive that you already installed into the OWC Data Doubler bracket on the table in front of you as shown.

You need to transfer the ribbon cable from the optical drive onto the OWC Data Doubler bracket. Simply use your fingernail to gently wiggle the cable out of the connector, pulling straight towards you. Once removed, plug it into the OWC Data Doubler bracket's green interposer board.

Then, remove the silver bracket that is sticking out the back of the optical drive and transfer it to the OWC Data Doubler drive bracket. Make certain the orientation of the bracket is the same - the position of the hole is important to fit properly. Use the same screws as you removed from the optical drive to fasten the silver bracket into the OWC Data Doubler drive bracket.



### 3.24 MacBook Pro 17" (Unibody 2010/2011) - Installation



Installation of the OWC Data Doubler bracket with it's hard drive is the opposite of the disassembly process.

When placing the OWC Data Doubler bracket into the computer, be cautious of the wires and especially the ribbon cable attached to the back of the optical drive, it is fragile.

The only difference between disassembly and assembly are the 2 screws on the right side of the bracket need to be changed from the short, black screws that originally were used, to 2 longer screws that are included with the contents of the kit.

Tighten all screws snugly. Attach the ribbon cables and the small silver cable, tucking it back between the drive bracket and the logic board.

You're all set!

### 3.25 MacBook 13" Polycarbonate - Disassembly

Begin by making sure that your computer is fully shut down. Turn the computer on it's top so you can access the bottom.

①



②

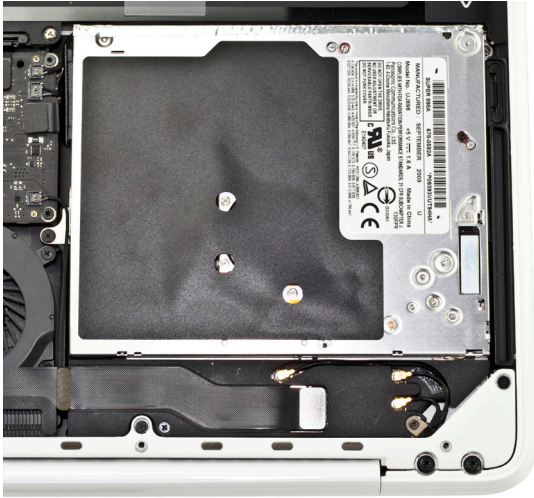


Remove the 8 Phillips screws securing the bottom cover on the laptop. All 8 screws are identical.

Once the screws are removed, lift up on the bottom cover from the back of the laptop and you will feel concealed plastic clips pop loose, releasing the bottom cover. Set the cover and screws aside.

### 3.25 MacBook 13" Polycarbonate - Disassembly (continued)

③



Rotate the MacBook around so that the optical drive is close to you. All future steps will assume this orientation will be used - having the computer this direction will make things easier to do.

④

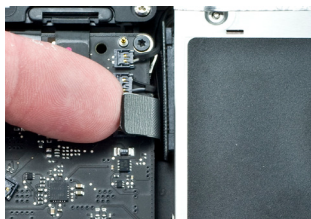


Begin removing the optical drive by taking out the silver screw at the top right of the optical drive. It's partially concealed by a black plastic tab that is part of the battery.

Set that screw aside, you will not be replacing that screw but rather will be changing to a longer screw in a future step.

### 3.25 MacBook 13" Polycarbonate - Disassembly (continued)

⑤



On the left side of the optical drive, you will see a black screw inserted through a silver bracket that is attached to the back of the optical drive. Remove the Phillips screw. Above the screw you just removed you will see an orange or black ribbon cable that connects to the optical drive. You need to lift up gently on the cable using a fingernail to release it from the connector on the logic board.

The cable is thin and fragile. Section 4.2 has detailed instructions on using a business card to help remove this delicate cable.

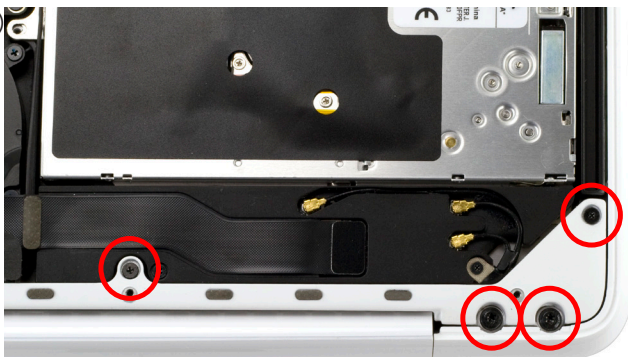
### 3.25 MacBook 13" Polycarbonate - Disassembly (continued)

⑥



On the right side of the optical drive there is a small black Phillips screw that goes through a covered, black plastic housing and into the optical drive. Remove this Phillips screw. You will be replacing this short Phillips screw with a longer one in a future step.

⑦

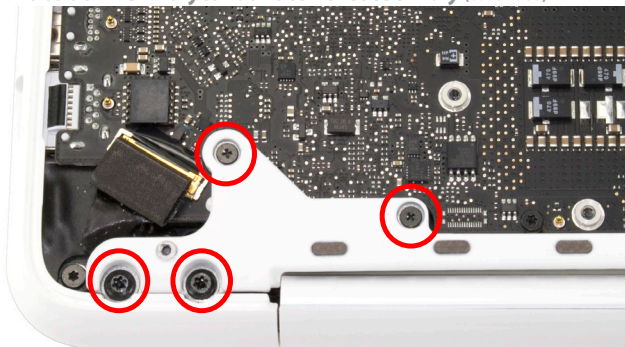


On the right side of the computer you need to remove 4 screws. 2 smaller screws are Phillips screws, and 2 larger screws are Torx T8.

Set these aside and continue.

**3.25 MacBook 13" Polycarbonate - Disassembly** (continued)

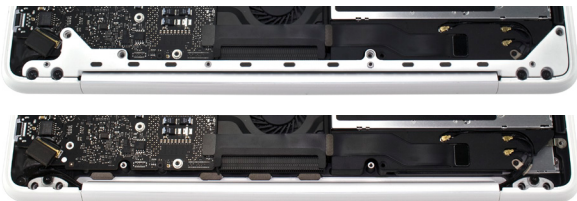
⑧



On the left side of the computer you also need to remove 4 screws. 2 smaller screws are Phillips screws, and 2 larger screws are Torx T8.

Set these aside and continue.

⑨

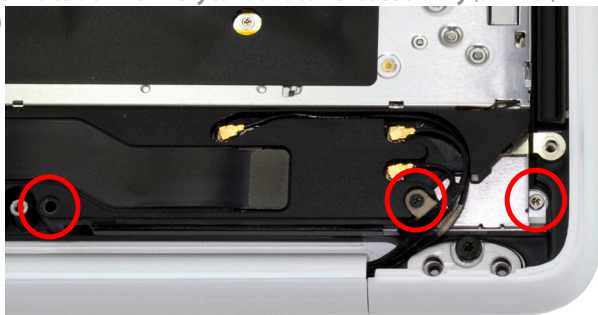


Once the 8 screws are removed from the rear vent, pull upwards on it and remove it from the laptop. Set it aside to continue.



### 3.25 MacBook 13" Polycarbonate - Disassembly (continued)

⑩



Remove the 3 Phillips screws circled above. The short silver screw that goes into the optical drive on the far right will not be reused when the OWC Data Doubler bracket is installed, you will be replacing it with a longer one.

⑪



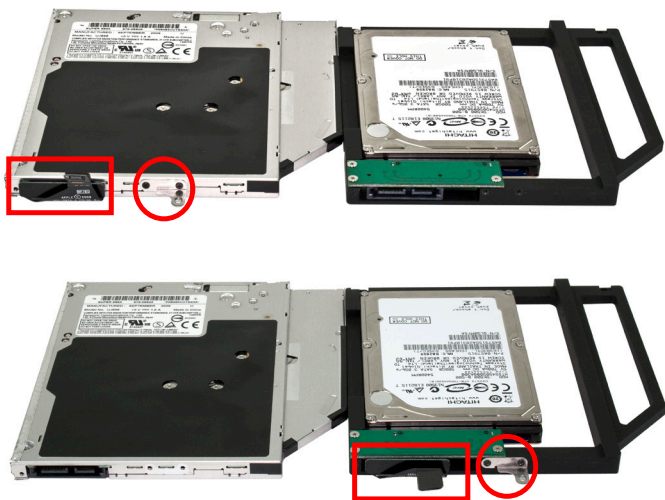
Once you have the final screws removed, you can lift up on the optical drive from the area near the ribbon cable and gently wiggle it out of the chassis.

#### Some important notes:

- The ribbon cable is very delicate and easily catches on wires or the logic board itself. You may need to make certain it is not being caught on anything as you remove it from the chassis. The cable is thin and fragile. Section 4.2 has detailed instructions on using a business card to help remove this delicate cable.
- The bracket near the ribbon cable is easy to catch on any wires that are near it, and you may need to move that wire around the bracket. It's easy to do, just be aware of it.



### 3.26 MacBook 13" Polycarbonate - Bracket & Cable Transfer



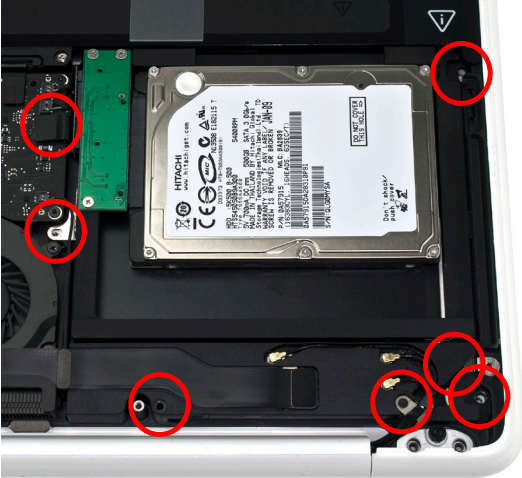
Place the optical drive you removed from your laptop and the hard drive that you already installed into the OWC Data Doubler bracket on the table in front of you as shown.

You need to transfer the ribbon cable from the optical drive to the OWC Data Doubler bracket. Simply use your finger-nail to gently wiggle the cable out of the connector, pulling straight towards you. Once removed, plug it into the OWC Data Doubler bracket's green interposer board.

Then, remove the silver bracket that is sticking out the back of the optical drive and transfer it to the OWC Data Doubler drive bracket. Make certain the orientation of the bracket is the same - the position of the hole is important to fit properly. Use the same screws as you removed from the optical drive to fasten the silver bracket into the OWC Data Doubler drive bracket.

### 3.27 MacBook 13" Polycarbonate - Installation

①



Installation of the OWC Data Doubler bracket with it's hard drive is the opposite of the disassembly process.

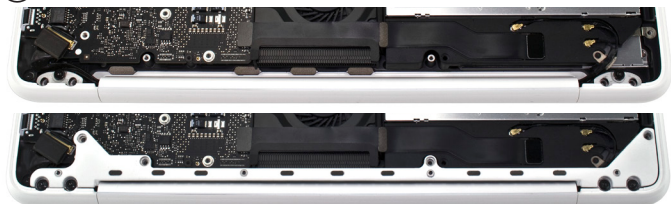
Begin by placing the OWC Data Doubler bracket into the computer, under the black plastic bracket first, then down into the optical bay. Be cautious of the wires and especially the ribbon cable attached to the back of the optical drive, it is fragile. Press on it to lock it back onto the logic board.

There are 2 differences between disassembly and assembly. The 2 screws on the right side of the bracket need to be changed from the short screws that originally were used, to 2 longer screws that are included with the contents of the kit. Also the screw used to secure the plastic bracket is changed to the longer screw that is included.

Reinsert the 2 Phillips screws you removed in step #10 from the plastic black speaker (the part with the 3 gold antennas connecting onto it).

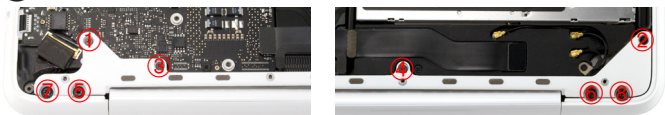
### 3.27 MacBook 13" Polycarbonate - Installation (continued)

②



Place the rear vent back onto the laptop and be sure to fully insert it into the chassis so it's flush with the body of the laptop.

③



Reinsert the 4 Phillips screws that you removed from the rear vent in the order above - tightening only enough to get the screws started until all 4 are inserted. Then, tighten firmly.

Once the 4 Phillips screws are inserted, you can continue inserting the 4 Torx T8 screws into the rear vent and like before, screw them in following the order above, starting all screws before fully tightening them firmly.

④



Place the bottom cover onto the laptop and replace the 8 Phillips screws you removed to take the bottom cover off.

Boot your computer and enjoy your new storage!

## 4 TROUBLESHOOTING & TIPS

### 4.1 Troubleshooting

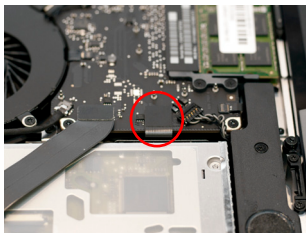
**Having problems installing? Go back and examine the steps and photographs. Most fit issues can be traced to missing a step or a screw.**

If your drive fails to mount in disk utility when you start your computer up, take the bottom cover off of the computer and verify that the ribbon cable is firmly inserted both to the interposer board, and to the logic board.

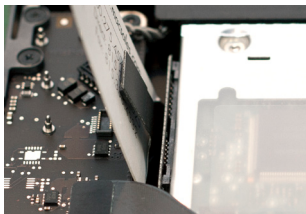
### 4.2 Installation Tips

**Some users have reported that the ribbon cable connecting the optical drive is difficult to remove, or is wedged underneath the edge of the logic board. It is imperative that you not damage this cable or it will need to be replaced!**

The edge of the ribbon cable needs to be protected from catching on the logic board when lifting the drive out of the chassis of the computer.



A business card, cut in half lengthwise is a perfect fit to slide down between the logic board and the cable. Lift the ribbon cable from the logic board using your fingernail or a plastic pry tool and gently lift the cable to allow the business card to slide down between the logic board and cable.



Here is another view of the business card fully inserted so that the edge is on the bottom of the chassis of the computer.



## 4 TROUBLESHOOTING & TIPS

### 4.3 Usage Tips

**To properly dismount any connected hard drives from your computer, you need to follow a few simple steps.**

**• For Macintosh systems:**

There are multiple methods to dismount disks with Macintosh systems. Either drag the icon for the hard disk you wish to dismount to the trash can, or you can click the eject icon next to the hard disk name in under the "DEVICES" tab in the sidebar in any finder window, and finally another method is to right click on the hard drive icon on your desktop and select "Eject".

**• For Windows systems:**

1. Go to the System Tray (located in the lower right corner of your screen). Click on the Eject icon (a small green arrow over a hardware image).
2. A message will appear, detailing the devices that the Eject icon controls. i.e. "Safely remove..." Click on this prompt.
3. You will then be given the following message. "Safe to Remove Hardware". It is now safe to unhook the OWC Mercury Elite Pro.

**Cloning your hard drive (making an exact copy of it):**

If you want to make an exact duplicate of a hard drive, we highly recommend Mike Bombich's donationware "**Carbon Copy Cloner™**". It's a great tool and is available at <http://bombich.com/>.

## 5 APPENDIX

### 5.1 FAQ

**Q:** How do I format my storage solution?

**A:** OWC has detailed instructions online for most popular operating systems, located at: [http://eshop.macsales.com/tech\\_center/fw HDD.cfm](http://eshop.macsales.com/tech_center/fw HDD.cfm)

**Q:** What file system should I choose when formatting my drive?

**A:** This will depend on how you want to use the drive, but in general we recommend:

- Mac OS X : HFS + (Mac OS Extended)
- Windows 2000/XP/Vista/7 : NTFS
- For cross-platform compatibility, FAT32 will work, but single file sizes are limited to 4GB. Other options using 3rd party software exist but are not covered here.

**Q:** Will the hard drives spin down when my computer goes to sleep or into stand-by mode?

**A:** Yes, they will spin down to save energy. It will take about 30 seconds to access your data after being in sleep or stand-by mode.

### 5.2 About Data Protection

To ensure that your files are protected and to prevent the loss of your data, we strongly suggest that you keep two copies of your data: one copy on your primary hard drive, and a second copy on either your secondary internal hard drive or another storage medium, such as an optical backup, or on a second external hard drive. Any data loss or corruption while using the OWC Data Doubler is the sole responsibility of the user, and under no circumstances will Other World Computing be held liable for compensation or the recovery of any lost data.

## 6 CUSTOMER SERVICE

### 6.1 Before Contacting Customer Service

- Read this manual and review Chapter 4: Troubleshooting & Tips.
- Try to confirm the problem is with the hard drive. If you have a second computer, move the enclosure to that system and verify that the solution does not function with that machine.
- Visit our tech center for more support suggestions, including FAQs.  
**[http://eshop.macsales.com/tech\\_center/index.cfm](http://eshop.macsales.com/tech_center/index.cfm)**

#### **If you still need support, please have the following available to you:**

- The serial number of the enclosure
- Your invoice number
- What operating system you are using
- Which kind and model of computer you are using

All of this will help speed your support contact along.

### 6.2 Support Hours Of Operation

**8AM - 10PM CT Monday - Friday**

**9AM - 4PM CT Saturday**

***By Telephone - (800) 275-4576 (North America only)***  
***International customers please call (815) 338-8685***

***Live Chat is available 24 hours a day, 7 days a week .*** Visit:  
<http://eshop.macsales.com> for more information.

***Or, you can email.*** Submit your email at  
<http://eshop.macsales.com/Service/Tech.cfm>





## Copyrights:

Copyright © 2010-2014 Other World Computing, Inc. All rights reserved. OWC is a registered trademark of Other World Computing. Other World Computing and Mercury Elite-AL Pro are trademarks of Other World Computing. Other marks may be the trademark or registered trademark property of their respective owners.

No part of this publication may be reproduced, stored in a retrieval system, or transmitted in any form or by any means, electronic, mechanical, photocopying, recording or otherwise, without the prior written consent of Other World Computing.

## Changes:

The material in this document is for information only and subject to change without notice. While reasonable efforts have been made in the preparation of this document to assure its accuracy, Other World Computing assumes no liability resulting from errors or omissions in this document, or from the use of the information contained herein. Other World Computing reserves the right to make changes or revisions in the product design or the product manual without reservation and without obligation to notify any person of such revisions and changes.

## FCC Statement:

Warning! Modifications not authorized by the manufacturer may void the user's authority to operate this device.

**NOTE:** This equipment has been tested and found to comply with the limits for a Class A digital device, pursuant to Part 15 of the FCC Rules. These limits are designed to provide reasonable protection against harmful interference when the equipment is operated in a commercial environment. This equipment generates, uses, and can radiate radio frequency energy and, if not installed and used in accordance with the instruction manual, may cause harmful interference with radio communications. Operation of this equipment in a residential area is likely to cause harmful interference, in which case the user will be required to correct the interference at his own expense.

**NOTE:** This equipment has been tested and found to comply with the limits for a Class B digital device, pursuant to Part 15 of the FCC Rules. These limits are designed to provide reasonable protection against harmful interference in a residential installation. This equipment generates, uses and can radiate radio frequency energy and, if not installed and used in accordance with the instructions, may cause harmful interference to radio communications. However, there is no guarantee that interference will not occur in a particular installation. If this equipment does cause harmful interference with radio or television reception, which can be determined by turning the equipment off and on, the user is encouraged to try to correct the interference by one or more of the following measures:

- Reorient or relocate the receiving antenna.
- Increase the separation between the equipment and receiver.
- Connect the equipment to an outlet on a circuit different from that to which the receiver is connected.

## Health And Safety Precautions:

- Use proper anti-static precautions while performing the installation of your hard drives into this drive enclosure. Failure to do so can cause damage to your drive mechanisms, and / or the hard drive enclosure.
- Read this User's Guide carefully, and follow the correct procedure when setting up the device.
- Do not open your hard drive or attempt to disassemble or modify it. Never insert any metallic object into the drive to avoid any risk of electrical shock, fire, short-circuiting or dangerous emissions. Your hard drive contains no user-serviceable parts. If it appears to be malfunctioning, have it inspected by a qualified Other World Computing Technical Support representative.
- Never expose your device to rain, or use it near water, or in damp or wet conditions. Never place objects containing liquids on the drive, as they may spill into its openings. Doing so increases the risk of electrical shock, short-circuiting, fire or personal injury.

## General Use Precautions:

- Do not expose the enclosure to temperatures outside the range of 5° C to 40° C (41° F to 104° F). Doing so may damage the drive or disfigure its casing. Avoid placing your drive near a source of heat or exposing it to sunlight (even through a window). Conversely, placing your drive in an environment that is too cold or humid may damage the unit.
- Always unplug the hard drive from the electrical outlet if there is a risk of lightning or if it will be unused for an extended period of time. Otherwise, there is an increased risk of electrical shock, short-circuiting or fire.
- Use only the power supply shipped with the device.
- Do not use the hard drive near other electrical appliances such as televisions, radios or speakers. Doing so may cause interference which will adversely affect the operation of the other products.
- Do not place the drive near sources of magnetic interference, such as computer displays, televisions or speakers. Magnetic interference can affect the operation and stability of your hard drive.
- Do not place heavy objects on top of the drive.
- If you detect a problem, consult the Troubleshooting section in this manual.
- Protect your hard drive from excessive exposure to dust during use or storage. Dust can build up inside the device, increasing the risk of damage or malfunction.
- Other World Computing recommends the use of normal glass cleaning products to keep the high lustre finish at its finest with this product. Be sure not to get any moisture inside the holes and if you do, allow time to air dry before use.
- Do not block the ventilation outlets on the front of the drive. These help to keep your drive cool during operation. Blocking the ventilation outlets may cause damage to your drive and cause an increased risk of short-circuiting or fire.



**R4 1/17/14 JD**

**OWCMANDATADBLR**