



## Multi-Mount<sup>®</sup> Drive Converter Bracket



Assembly Manual

## 1 INTRODUCTION

1.1 System Requirements	4
1.1.1 Computer Requirements	
1.1.2 Drive Requirements	
1.1.3 Tool Requirements	
1.2 Package Contents	5

## 2 BRACKET ASSEMBLY

2.1 Installing 3.5" Hard Disk Drives	6
2.2 Installing a 2.5" SSD or HDD	8
2.3 Combining the 2.5" and 3.5" Brackets	9
2.4 Installing a 2.5" Drive with a 3.5" Drive	10

## 3 COMPUTER INSTALLATION

3.1 Installing the OWC Multi-Mount into a Mac Pro	11
3.2 Installing the OWC Multi-Mount into a PC case	12

## 4 TROUBLESHOOTING

4.1 Troubleshooting	13
4.2 Usage Tips	13

## 5 SUPPORT RESOURCES

5.1 Online Resources	14
5.2 About Data Protection	14
5.3 Contacting Technical Support	15

Thank you for purchasing the OWC Multi-Mount system.

This guide provides detailed instructions on how to install different combinations of 2.5" and 3.5" drives into your Mac or PC, using the Multi-Mount system. If you have questions after reading the installation steps provided, please see Pages 13-14 for additional support resources.



Your computer is a static-sensitive device. It is susceptible to invisible damage if not protected during installation.

We recommend proper grounding through the use of a grounding strap. Be sure to work in a clean and static-free area, and avoid wearing clothing that retains static charges. For more information, please visit:

<http://www.macsales.com/static>

**Got tools?** If you don't have the tools necessary to complete this installation, Newer Technology has a toolkit which includes everything you need to perform this and most other common computer hardware installations.



It's available at:  
<http://www.macsales.com/tools>

## CHAPTER 1 - INTRODUCTION

### 1.1 System Requirements

#### 1.1.1 Computer Requirements

Any Mac or PC with an available 5.25" optical bay or 3.5" hard drive bay.

#### 1.1.2 Drive Requirements

The OWC Multi-Mount is designed to work with any 3.5" or 2.5" SATA drive.

#### 1.1.3 Tool Requirements

Phillips #1 or #2 Screwdriver

**Note:** Depending on the computer you are using, there may be additional tools required; check your computer's documentation.

## 1.2 Package Contents

### **Item**

- ① OWC Multi-Mount 3.5" Drive Bracket (2 required)
- ② OWC Multi-Mount 2.5" Drive Bracket (2 required)
- ③ Screws for 2.5" Bracket - Fine Thread (6 pieces)
- ④ Screws for 3.5" Bracket - Coarse Thread (16 pieces)

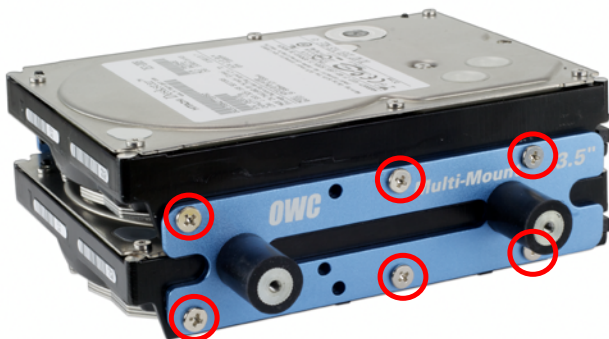


### **IMPORTANT:**

The OWC Multi-Mount drive mounting system brackets are sold both individually and as sets. This manual details both types of brackets. Please be aware that the item you purchased may not include all of the items listed here. Please see your invoice for specific items ordered.

## CHAPTER 2 - BRACKET ASSEMBLY

### 2.1 Installing 3.5" Hard Disk Drives



Begin by positioning the bottom 3.5" Hard Disk Drive (HDD) with the connection ports facing away from you, then pick up the drive bracket labeled as OWC Multi-Mount 3.5".

Place the Multi-Mount onto the bottom 3.5" HDD using the center Phillips screw (coarse threads) but don't tighten it completely yet.

Attach a second screw to one of the outside holes in order to center the bracket on the hard disk drive. Afterward you can insert the third screw and tighten all three of them firmly.

If you intend to install a second 3.5" HDD into the Multi-Mount, continue with installation of that drive following the same steps noted above.

**Note:** you do not have to install 2 drives into the bracket. A second drive can be added at a later time.

## 2.1 Installing 3.5" HDDs (cont.)



Once you have the right bracket installed, rotate the hard drive and attach the left side bracket using the same method described earlier.

The OWC 3.5" Multi-Mount assembly is now ready to be installed into your system. Chapter 3 includes photos of common installation scenarios.

**Note:** you also can add a 2.5" hard disk drive using the OWC 2.5" Multi-Mount -- this configuration is covered in the next chapter.

## 2.2 Installing a 2.5" SSD or HDD



To install a 2.5" SATA drive into the Multi-Mount, place the 2.5" drive on the table in front of you, with the connection ports facing to the right side. Take the drive bracket and position it as shown above.

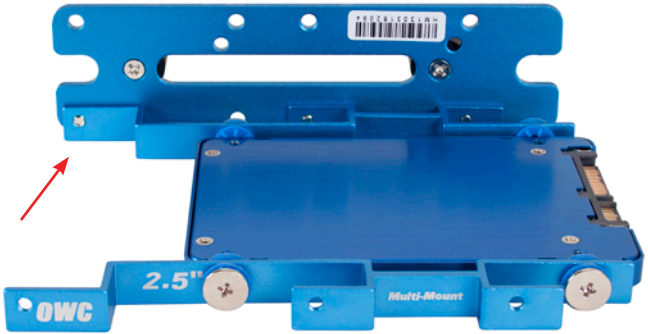
Use the large Phillips screws to affix the drive to the bracket. Note there are rubber grommets used in conjunction with the screws to reduce vibrations.

Once attached, rotate the drive and repeat using the other 2.5" drive bracket. Before moving forward, make certain that all four screws are firmly attached to the drive.

The OWC 2.5" Multi-Mount is now ready to install into a 3.5" drive bay, or into the OWC 3.5" Multi-Mount. Chapter 3 includes photos of common installation scenarios.

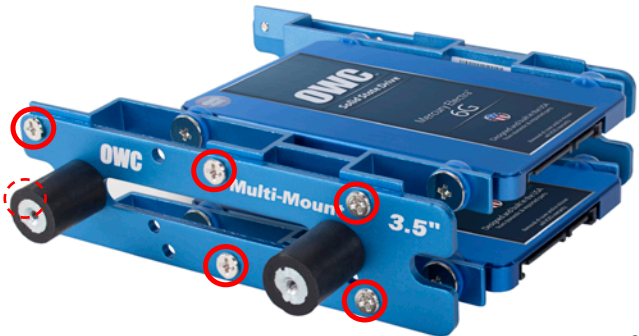


## 2.3 Combining the 2.5" and 3.5" Brackets



It is possible to install a total of two 2.5" drives onto the 3.5" OWC Multi-Mount bracket. Note the position of the bracket extension shown above (arrow) relative to the 3.5" bracket. This is important when creating a configuration with two 2.5" drives installed.

**Note:** this shows the underside of the top drive, prior to a second SSD being installed and the remaining brackets added (below).

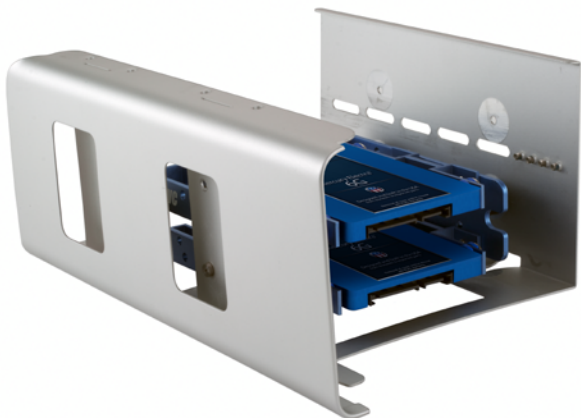


## 2.4 Installing a 2.5" Drive with a 3.5" Drive



This is a completed assembly comprised of one set of 3.5" OWC Multi-Mount drive brackets, and one set of 2.5" OWC Multi-Mount, all assembled into one unit. Be sure to orient the bracket so that the SATA ports both point towards the rear of the Multi-Mount.

### 3.1 Installing the OWC Multi-Mount into a Mac Pro



The Mac Pro's optical bay can support a total of two SATA devices. First, attach the completed Multi-Mount assembly to the optical drive cage using the four screws that Apple supplies (attached to the cage). Once the Multi-Mount is secured, start sliding the cage back into the optical bay, threading the large cutouts on the bottom of the cage with the large screws on the bottom of the bay.

When the cage is about half way in, connect the SATA device's cables then slide the cage the rest of the way, making sure not to pinch the cables or bend them in the process.

### 3.2 Installing the OWC Multi-Mount into a generic PC case



Here a typical PC case is shown with the 2.5" Multi-Mount brackets installed in both a 5.25" (top) drive bay, and also in a 3.5" drive bay (bottom).

Depending on the computer case being used, the methods of installation will vary. Remember to properly orient the brackets, and use the included screw kits to securely fasten the OWC Multi-Mount into your computer's chassis.

### 4.1 Troubleshooting

Having problems installing? Go back and examine the steps and photographs. Most fit issues can be traced to missing a step or screw.

Double check that your brackets are facing the correct direction and that you are not orienting the drive backwards. You want to be sure that the SATA ports are pointing in the right direction for your case installation.

Each computer is different and this bracket is designed to be flexible enough to work in any situation. If you do not have the correct bracket or enough brackets for your system they are available individually so you can mix and match the brackets to accommodate nearly any computer system.

### 4.2 Usage Tips

Once you have installed your drives into the OWC Multi-Mount bracket system, route your cables using the shortest path possible, but do use any holes or grommets that your case has to offer. Don't pinch any cables and make certain to not route your wires over sharp edges or corners.

#### **Need cables?**

OWC's website has a wide variety of SATA and power cable offerings. Depending on your installation type, you may need straight, left angle, or right angle SATA cables, or even more unusual power converter cables.

<http://eshop.macsales.com/shop/hard-drives/Cables-Mounting-Kits/>

## CHAPTER 5 - SUPPORT RESOURCES

### 5.1 Online Resources

To access our online Frequently Asked Questions, please visit:

[www.macsales.com/faq](http://www.macsales.com/faq)

To access our Mac and PC formatting guides please visit:

[www.macsales.com/format](http://www.macsales.com/format)

### 5.2 About Data Protection

To ensure that your files are protected and to prevent the loss of your data, we strongly suggest that you keep two copies of your data: one copy on your primary hard drive, and a second copy on either your secondary internal hard drive or another storage medium, such as an optical backup, or on a second external hard drive.

Any data loss or corruption while using the OWC Multi-Mount is the sole responsibility of the user, and under no circumstances will Other World Computing be held liable for compensation or the recovery of **any lost data**.

## 5.3 CONTACTING TECHNICAL SUPPORT

**8AM - 8PM CT Monday - Friday**

**9AM - 4PM CT Saturday**

**Phone support:**

1 (800) 275-4576 (North America only)

+1 (815) 338-8685 (International)

**Live Chat is available during normal business hours:**

[www.macsales.com/livechat](http://www.macsales.com/livechat)

**Email Support is available at:**

[www.macsales.com/ts\\_email](http://www.macsales.com/ts_email)

## **Changes:**

The material in this document is for information purposes only and subject to change without notice. While reasonable efforts have been made in the preparation of this document to assure its accuracy, Other World Computing and its officers and employees assume no liability resulting from errors or omissions in this document, or from the use of the information contained herein. Other World Computing reserves the right to make changes or revisions in the product design or the product manual without reservation and without obligation to notify any person of such revisions and changes.

## **Health And Safety Precautions:**

- Use proper anti-static precautions while performing the installation.
- Read this user guide carefully and follow the correct procedures when setting up the device.

## **Copyrights and Trademarks:**

No part of this publication may be reproduced, stored in a retrieval system, or transmitted in any form or by any means, electronic, mechanical, photocopying, recording or otherwise, without the prior written consent of Other World Computing.

© 2015 Other World Computing.

All rights reserved. Multi-Mount, Other World Computing and OWC are trademarks of New Concepts Development Corporation, registered in the U.S. Patent and Trademark Office and in Canada. The OWC logo is a trademark of New Concepts Development Corporation. Apple and Mac Pro are trademarks of Apple Inc., registered in the U.S. and other countries. Other marks may be the trademark or registered trademark property of their owners.

