

Other World Computing



OWC Mercury Elite Pro
FireWire 800 / USB 3.0 / eSATA

Assembly Manual

1 INTRODUCTION

1.1 SYSTEM REQUIREMENTS

- 1.1.1 Mac Requirements
- 1.1.2 PC Requirements
- 1.1.3 Supported Hard Drives

1.2 PACKAGE CONTENTS

1.3 ABOUT THIS MANUAL

1.4 PORT VIEW & CABLE CONNECTIONS

1.5 DETAILED VIEW

- 1.5.1 LED Indicator

2 SYSTEM SETUP

2.1 HARD DRIVE ASSEMBLY

2.2 CONNECTIONS TO COMPUTER

2.3 DESKTOP USE OPTIONS

2.4 PORTABILITY OPTIONS

3 FORMATTING

3.1 MACINTOSH FORMATTING

3.2 REMOVING AN EXISTING GUID PARTITION

3.3 WINDOWS FORMATTING

4 TROUBLESHOOTING & TIPS

4.1 TROUBLESHOOTING

4.2 USAGE TIPS

5 APPENDIX

5.1 FAQ

5.2 ABOUT DATA PROTECTION

6 CUSTOMER SERVICE

6.1 BEFORE CONTACTING CUSTOMER SERVICE

6.2 CONTACT INFORMATION

1 INTRODUCTION

1.1 System Requirements

1.1.1 Mac Requirements

- Minimum PowerPC G4 CPU, 128MB RAM
- eSATA interface, Mac OS X 10.3 or later
- FireWire interface, Mac OS X 10.2 or later
- USB 3.0 interface - see your interface card manufacturer for specifications

1.1.2 PC Requirements

- Minimum 500MHz Intel Pentium III CPU, 128MB RAM
- eSATA interface, Windows XP / Vista / Windows 7
- FireWire interface, Windows 2000 / XP / Vista / Windows 7
- USB 3.0 interface, Windows 2000 / XP / Vista / Windows 7

1.1.3 Supported Hard Drives

- Any 3.5" SATA hard drive
- Any 2.5" SATA Solid State Drive (SSD) (when used with auxiliary bracket, not included)

1.2 Package Contents

Item

- ① OWC Mercury Elite Pro
- ② Vertical Stand
- ③ Power Cable
- ④ Power Supply
- ⑤ Rubber Feet (for horizontal use)
- ⑥ eSATA cable
- ⑦ USB 3.0 (A-B) cable
- ⑧ FireWire 800 (1394B) cable
- ⑨ Software CD Bundle (not all models)
- ⑩ User Guide & Owner's Manual

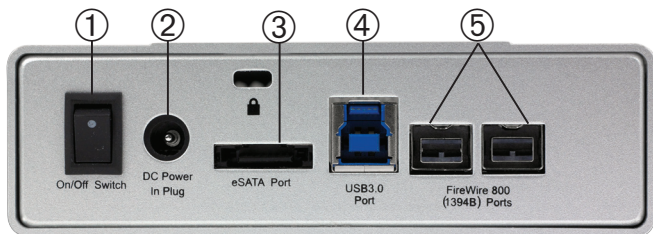


Not pictured: Screw Pack (inside enclosure)

1.3 About This Manual

Firmware, images, and descriptions may vary slightly between this manual and the unit shipped. Functions and features may change depending on the firmware version. Please visit the product webpage for the most recent specifications.

1.4 Port View & Cable Connections



Cable Connections:

The OWC Mercury Elite Pro has multiple interfaces to work with any computer system.

- ① **On/Off Switch** - Turn the OWC Mercury Elite Pro on and off here.
- ② **DC IN port** - Attach the included 12V external power supply here.
- ③ **eSATA Port** - The utmost in speed. If you're trying to make your OWC Mercury Elite Pro the fastest it can be, attach an eSATA cable to this port.
- ④ **USB 3.0 Port** - Connect one of your computer's USB ports to the OWC Mercury Elite Pro here using the included cable. Great for cross platform use or to connect to systems that do not have an eSATA or FireWire interface.
- ⑤ **FireWire 800 (1394B) Ports** - Connect one FireWire 800 port to your computer using the included cable and have an extra FireWire 800 port to daisy chain to additional peripherals with!

1.5 Detailed View

1.5.1 LED Indicator

The OWC Mercury Elite Pro has a single cool blue LED at the front of the hard drive enclosure. It will illuminate blue when powered on, and flash on drive activity (both reading and writing).

2 SYSTEM SETUP

This guide will get you up and running quickly, demonstrating how to install your own 3.5" drive into the OWC Mercury Elite Pro enclosure.



Your computer is a static-sensitive device. It is susceptible to invisible damage if not protected during installation.

We recommend proper grounding by using a grounding strap. Make sure to work in a clean and static-free area, and avoid wearing clothing that retains static charges.

For more information, please visit <http://www.macsales.com/static>

Got tools? If you don't have the tools necessary to complete this installation, Newer Technology has a fantastic toolkit with everything you need included to perform this installation, and most common computer hardware installations.



It's available at:

<http://www.macsales.com/tools>

2 SYSTEM SETUP

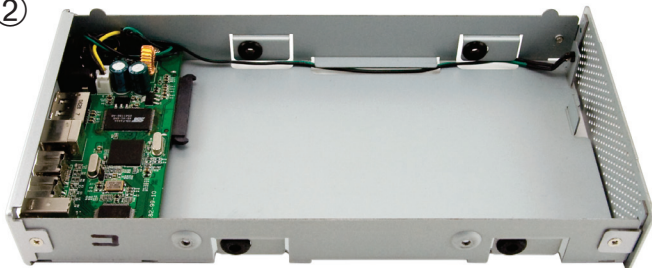
2.1 Hard Drive Assembly & Installation

①



On the bottom of the OWC Mercury Elite Pro enclosure you will find 2 Phillips screws. Remove those two screws and the drive compartment will slide out towards the front of the enclosure. Remove the outer shell to proceed with drive installation.

②



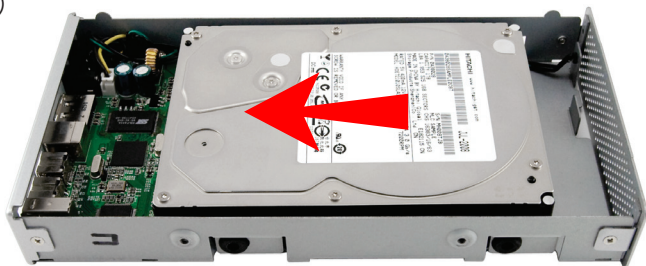
Here you see the OWC Mercury Elite Pro internal drive tray compartment. There will be a package of 4 screws inside of the compartment taped down, please remove them to use in step 4.

Insert your SATA 3.5" hard drive in the bay, and fully seat the drive connector onto the bridge board. The bridge board is the green circuit board pictured to the left in this photograph. You will see there is a connector built onto the bridge board that will interface with the drive, providing power and signal connections - no cables to connect!

2 SYSTEM SETUP

2.1 Hard Drive Assembly & Installation (continued)

③



Place your drive mechanism into the chassis and onto the bridge card, and press the drive towards the ports to firmly affix the drive into the SATA connector. You may need to wiggle the drive from side to side to fit it in between the rubber grommets that the drive is secured with. Be sure to not tear them when inserting the drive into the chassis.

④



Insert (but not fully tighten) 2 of the included Phillips screws into the drive mechanism through the rubber grommets on the side of the enclosure. Repeat on the other side of the enclosure - there are 4 screws total. Once you have inserted all 4 screws into the drive you can fully tighten them.

2 SYSTEM SETUP

2.1 Hard Drive Assembly & Installation (continued)

IMPORTANT - IF YOUR DRIVE IS LARGER THAN 2TB

Since hard drives have been introduced with capacities greater than 2.2TB, the industry has worked to resolve known capacity addressing limitations that date back to the original design of the PC.

These limitations are caused by 32-bit definitions used for partition sizes and logical block addresses (LBAs) resulting in a maximum addressable capacity size of 2.199TB.

The most direct way to resolve this issue is to use Long LBAs. However, Long LBAs are only supported in 64-bit operating systems, like Mac OS X, Windows 7 and Windows Vista. Users of older operating systems wishing to use these high-capacity drives will need to limit the drive size to under 2.2TB to be able to use the storage solution.

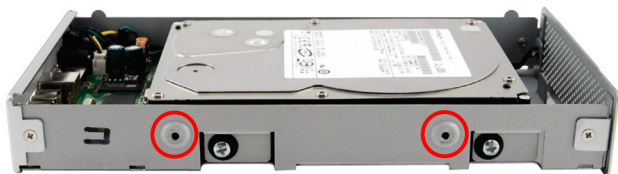
To limit the OWC Mercury Elite Pro's maximum drive capacity to 2.2TB, flip the dip switch (circled below) to the 1 position. The default position is ON meaning volumes larger than 2.2TB are able to be created.



2 SYSTEM SETUP

2.1 Hard Drive Assembly & Installation (concluded)

⑤



Screw holes on bottom



Once you have completed installation of your drive, turn the chassis so that the ports are on your left as shown in the above picture. You can see the 2 screw holes that the drive enclosure outer shell screws into circled. Slide the outer shell onto the inner chassis from the rear and insert the 2 Phillips screws you removed to start the assembly process. The enclosure is now fully assembled.

2.2 Computer Connections

The OWC Mercury Elite Pro requires external power to operate. Insert the power adapter into a wall outlet and plug it in to the back of the OWC Mercury Elite Pro.

To use the OWC Mercury Elite Pro, connect any interface cable to the drive and the computer. Then, turn the power switch to the ON position, and verify the blue LED on the front of the drive is illuminated.

Your drive should mount on your computer's desktop, or a dialog box will appear if you have a new, unformatted drive installed.

2 SYSTEM SETUP

2.3 Desktop Use Options



The OWC Mercury Elite Pro includes a vertical stand and also rubber feet for those who wish to stack multiple drives on top of each other. For those that do not want adhesive rubber feet or prefer a more elegant solution, a horizontal desk stand has been designed and is available at:

<http://eshop.macsales.com/item/Other%20World%20Computing/MEP1STAND/>

2.4 Portability Options



OWC offers a single-stitched nylon case that holds your OWC Mercury Elite Pro, along with accessories such as power supply, eSATA, USB or FireWire cables. Great for keeping everything together when you're on the go.

The case is made from high quality Cordura nylon, foam padding and a plush nylon interior to cradle and protect your OWC Mercury Pro from the rigors of everyday use.

The case for the OWC Mercury Elite Pro is available at:

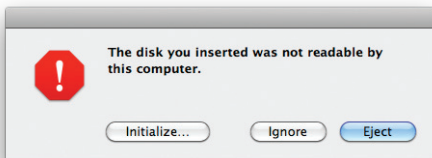
<http://eshop.macsales.com/item/OWC/MEFWCASE/>

3 FORMATTING

3.1 Formatting your OWC Mercury Elite Pro on a Macintosh with Mac OS X

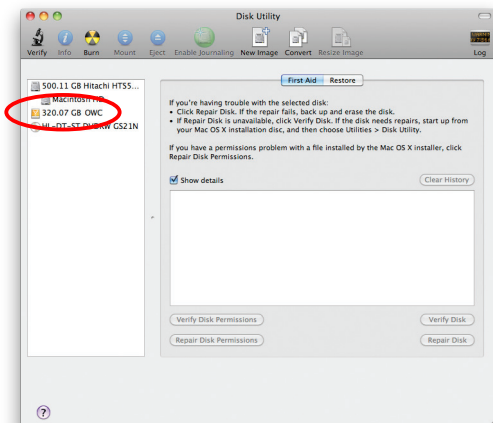
IMPORTANT NOTE: This procedure will erase all data on your disk drives in the OWC Mercury Elite Pro. Back up any important data before proceeding!

①



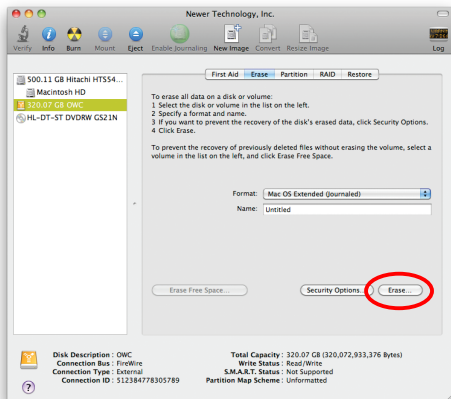
Click on the "Initialize" button. (If this does not appear, open Disk Utility located in /Applications/Utilities)

②



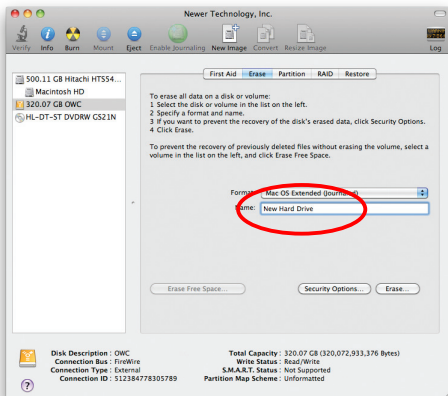
Select the device with no volumes attached to it; in this picture, that would be the 320.07 GB OWC device. Click on the picture of the drive icon next to the text.

③



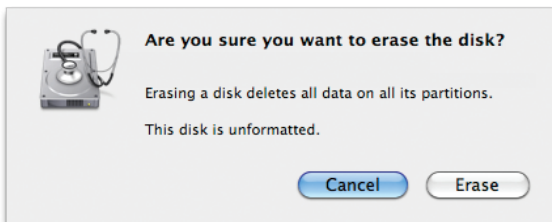
Once you've selected the OWC device, you will notice the above change in the Disk Utility application. Click on the "Erase" tab in this picture.

④



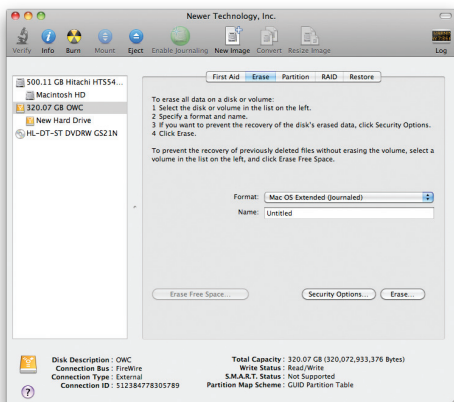
You then need to name the volume that you want to format, and erase it. Name the volume as you want, choose the Volume Format pulldown (Mac OS Extended (Journaled) is default), and click the Erase button.

⑤



Click the erase button to confirm you wish to erase the disk.

⑥



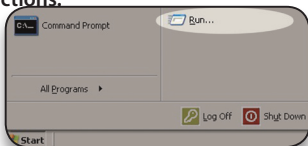
After a few moments, the erase command will complete and the OWC Mercury Elite Pro volume will mount on your desktop. You can quit Disk Utility, you're all set!

3.2 Removing the GUID Partition Scheme

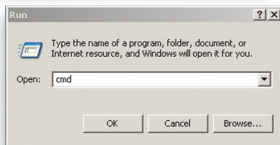
Only for XP, 2000, ME and earlier. (XP 64-BIT, Vista & Windows 7 can continue to the next section)

If you are not installing a brand-new hard drive into your enclosure, it may have a GUID drive partition already installed on it, especially if it was originally used with a Macintosh. Unfortunately, this is not readable by Windows without special software. If you wish to use your storage solution on a computer running Windows, you will need to repartition and reformat using the following instructions.

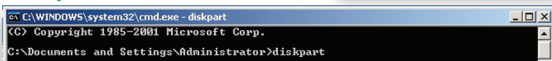
- ① Go to the DOS command prompt by selecting "Run" from the Start Menu.



- ② Type **cmd** into the text box, and click the "OK" button.



- ③ Type **diskpart** and hit enter.



- ④ Type **list disk** and hit enter.



- ⑤ Type **select disk x** replacing x with the number of the disk you want to reformat. (Typically, you will see an asterisk (*) under "GPT" for the disk requiring formatting.)



WARNING: The **clean** command will destroy ALL data on the disk you run it on!!! Be sure there is **nothing** you need to keep on your drive before proceeding.

- ⑥ Type **clean** and hit enter.



- ⑦ Type **exit** and hit enter.

- ⑧ Close the command prompt window.

You may now proceed with formatting the drive.

3.3 Formatting your OWC Mercury Elite Pro on Windows 2000 and later

Instructions for other operating systems can be found at <http://www.macsales.com/format>.

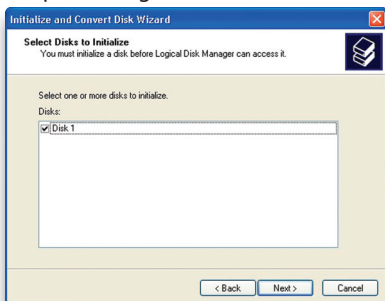
IMPORTANT NOTE: This procedure will erase all data on your hard disk drives in the OWC Mercury Elite Pro. Back up any important data before proceeding!

① With the drive connected to the computer and powered on, right click on the “My Computer” icon and select “Manage” from the menu. The “Initialize and Convert Disk Wizard” window should appear.

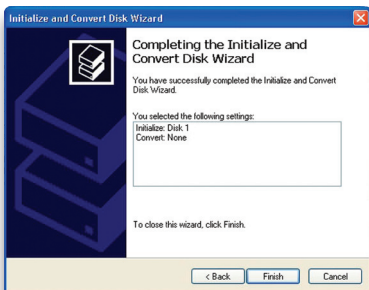


If the Wizard does not appear, expand the Storage menu by clicking on the plus (+) sign. Then, right click next to the disk number of the drive that you have just connected and click Initialize to bring up the Wizard.

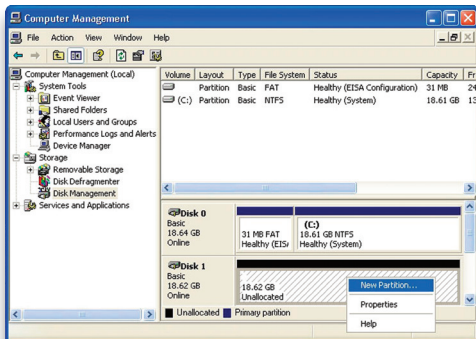
② In the next window, there should be only one drive listed. That will be the drive that you connected via eSATA, FireWire or USB. Make sure the box next to the drive name is checked and click “Next.”



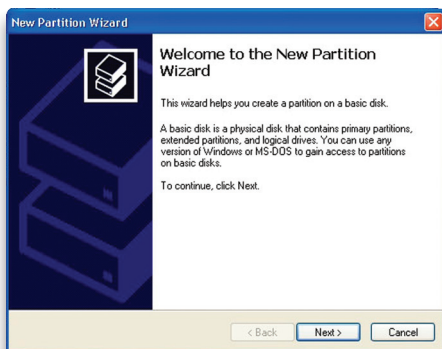
③ The Wizard will perform its tasks, and you will get the following screen. You may click “Finish.”



④ Your drive will appear similar to how Disk 1 does below. Notice that the space on the lower right reads as “Unallocated.” Right click in this space and choose “New Partition.”



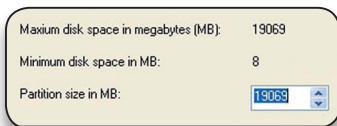
⑤ The “New Partition Wizard” will launch. Click “Next” to continue.



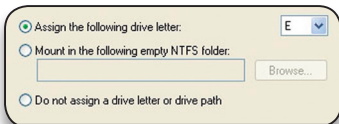
⑥ Specify your partition type as “Primary,” and click “Next.”



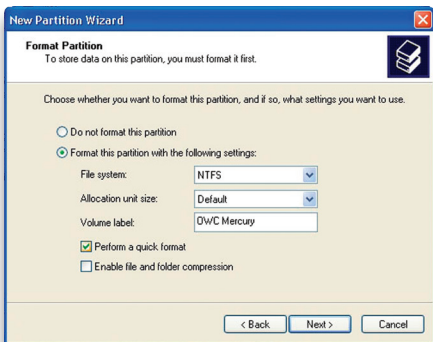
⑦ The wizard will display the maximum partition size for your drive. It is strongly recommended that you **do not** change the default value. Click “Next”



⑧ If you like, you can specify the drive letter designation for your new drive. Otherwise, one will automatically be assigned. Click “Next.”

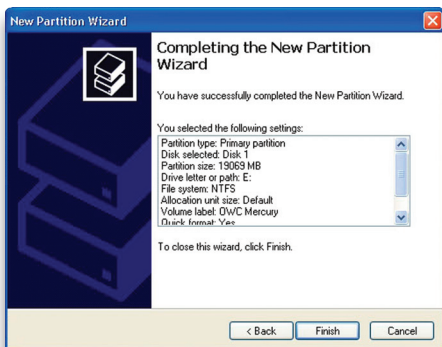


⑨ Before you can use the drive, it must be formatted. On most systems running Windows 2000 or later, it is advisable to specify the file system as NTFS. Leave the Allocation unit size as “Default,” and feel free to give the drive whatever name you prefer. Be sure to check the box “Perform a quick format.”

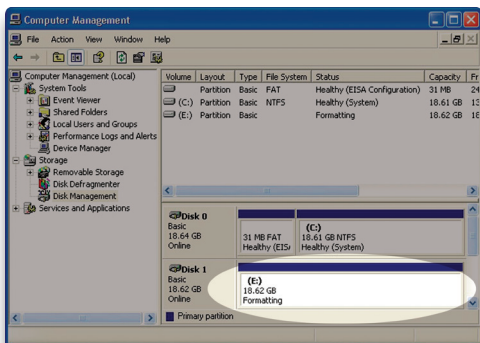


If you do not, it will likely take several hours for your drive to format. Click “Next.”

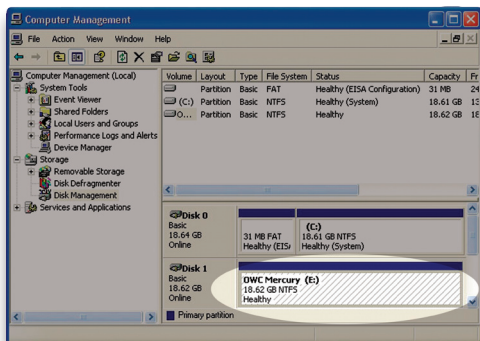
⑩ At the end of the Wizard, you will see a summary of the information that you specified during the previous steps. Click “Finish.”



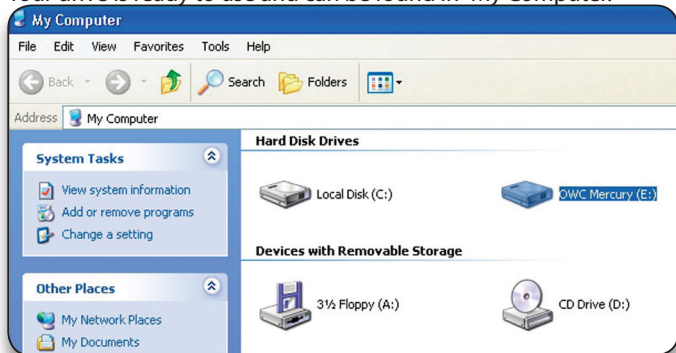
⑪ Once you have finished with the formatting wizard, you will see that your new drive (represented as “Disk E” in this case) will display a message of “Formatting.” This should only take a couple of minutes if you chose the quick format option.



⑫ After a moment or two, the drive's status will change from “Formatting” to “Healthy.”



⑬ At this point, you may close the Computer Management window. Your drive is ready to use and can be found in “My Computer.”



Using your new Storage Solution on both Macs and PCs?

MacDrive™ takes the guesswork out of sharing files. Whether you are transferring files between home and the office, a class room lab and your dorm room or even on the same computer, MacDrive makes it painless. In fact, you'll hardly know MacDrive is working.

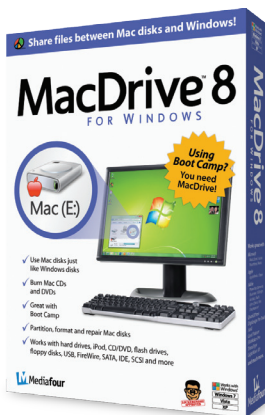
Once installed MacDrive will automatically give you access to any Mac disk you pop into your computer. MacDrive even puts an “apple” icon on the Mac disk, just to keep things clear.

You can access files on the Mac disk just like you would with a Windows formatted disk. Open files from the disk or from within a program. Mac files automatically get the right icons and file name extensions under both Windows and Mac OS.

Works great with software from Microsoft, Adobe, Quark, FileMaker, Avid, Digidesign, Corel, NewTek and more.

You can find MacDrive at:

<http://www.macsales.com/macdrive>



4 TROUBLESHOOTING & TIPS

4.1 Troubleshooting

Some of the most simple problems can be traced to power, or connectivity issues.

Verify that your cables (both ends!) are properly plugged into the computer and storage solution. If they are, and the storage solution is still not working properly, try connecting to another interface such as the USB connection and see if the device works properly. If these suggestions do not work, try the OWC Mercury Elite-A Pro mini on a different computer, if available to you.

4.2 Tips

To properly dismount any connected hard drives from your computer, you need to follow a few simple steps.

• For Macintosh systems:

There are two methods to unmount disks with Macintosh systems. Either drag the icon for the hard disk you wish to dismount to the trash can, or click the eject icon next to the hard disk name in under the "DEVICES" tab in the sidebar in any finder window.

• For Windows systems:

1. Go to the System Tray (located in the lower right corner of your screen). Click on the Eject icon (a small green arrow over a hardware image).
2. A message will appear, detailing the devices that the Eject icon controls. i.e. "Safely remove..." Click on this prompt.
3. You will then be given the following message. "Safe to Remove Hardware". It is now safe to unhook the OWC Mercury Elite Pro.

5 APPENDIX

5.1 FAQ

Q: How do I format my storage solution?

A: OWC has detailed instructions online for most popular operating systems, located at: http://eshop.macsales.com/tech_center/fw HDD.cfm

Q: What file system should I choose when formatting my drive?

A: This will depend on how you want to use the drive, but in general we recommend:

- Mac OS X : HFS + (Mac OS Extended)
- Windows 2000/XP/Vista : NTFS
- For cross-platform compatibility, FAT32 will work, but single file sizes are limited to 4GB. Other options using 3rd party software exist but are not covered here.

Q: Will the hard drives spin down when my computer goes to sleep or into stand-by mode?

A: Yes, they will spin down to save energy. It will take about 30 seconds to access your data after being in sleep or stand-by mode.

Q: I have an older system and it does not support hard drives larger than 2.2TB. Can I use a 3TB drive with my system?

A: Yes, but only up to the 2.2TB limitation of your operating system. To limit the OWC Mercury Elite Pro to a maximum of 2.2TB capacity, you need to flip a dip switch inside the enclosure. See section 2.1 for detailed instructions.



Q: I have an older Intel based Mac - can I use my OWC Mercury Elite Pro as a boot drive?

A: Yes! Older (Pre-2008) Intel Mac systems require the use of USB for booting but it certainly will work. Post-2008 Intel Mac systems can boot via either USB or FireWire.

5 APPENDIX

(question continued)

The list of systems that can boot via FireWire are as follows:

Machine Model	Release Date	OS Version	Boots FireWire	Boots USB
Mac Pro 1,1	Aug 1, 2006	10.6.3		
Mac Pro 2,1	Apr 1, 2007	10.6.3		
Mac Pro 3,1	Jan 1, 2008	10.6.3		
Imac 5,1	Sep 1, 2006	10.6.3		
Imac 7,1	Aug 1, 2007	10.6.3		
Imac 8,1	Apr 1, 2008	10.6.3		
Macbook 1,1	May 1, 2006	10.6.3		
Macbook 3,1	May 1, 2007	10.6.3		
Macbook 4,1	Feb 1, 2008	10.6.3		
Macbook Pro 1,1	May 1, 2006	10.6.3		
Macbook Pro 2,1	Oct 1, 2006	10.6.3		
Macbook Pro 3,1	Jun 1, 2007	10.6.3		
Macbook Pro 4,1	Feb 1, 2008	10.6.3		
Mac Mini 1,1	Feb 1, 2006	10.6.3		
Mac Mini 3,1	Mar 1, 2009	10.6.3		

5.2 About Data Protection

To ensure that your files are protected and to prevent the loss of your data, we strongly suggest that you keep two copies of your data: one copy on your OWC Mercury Elite Pro, and a second copy on either your internal hard drive or another storage medium, such as an optical backup, or on a second external hard drive. Any data loss or corruption while using the OWC Mercury Elite Pro is the sole responsibility of the user, and under no circumstances will Other World Computing be held liable for compensation or the recovery of any lost data.

6 CUSTOMER SERVICE

6.1 Before Contacting Customer Service

- Read this manual and review Chapter 4: Troubleshooting & Tips.
- Try to confirm the problem is with the hard drive. If you have a second computer, move the enclosure to that system and verify that the solution does not function with that machine.
- Visit our tech center for more support suggestions, including FAQs.
http://eshop.macsales.com/tech_center/index.cfm

If you still need support, please have the following available to you:

- The serial number of the enclosure
- Your invoice number
- What operating system you are using
- Which kind and model of computer you are using

All of this will help speed your support contact along.

6.2 Support Hours Of Operation

8AM - 8PM CST Monday - Friday

9AM - 4PM CST Saturday

By Telephone - (800) 275-4576 (North America only)

International customers please call (815) 338-8685

Live Chat is available during normal business hours as well. Visit:

<http://eshop.macsales.com> for more information.

Or, you can email. Submit your email at

<http://eshop.macsales.com/Service/Tech.cfm>

Copyrights:

Copyright © 2009-12 Other World Computing, Inc. All rights reserved. No part of this publication may be reproduced, stored in a retrieval system, or transmitted in any form or by any means, electronic, mechanical, photocopying, recording or otherwise, without the prior written consent of Other World Computing.

Changes:

The material in this document is for information only and subject to change without notice. While reasonable efforts have been made in the preparation of this document to assure its accuracy, Other World Computing assumes no liability resulting from errors or omissions in this document, or from the use of the information contained herein. Other World Computing reserves the right to make changes or revisions in the product design or the product manual without reservation and without obligation to notify any person of such revisions and changes.

FCC Statement:

Warning! Modifications not authorized by the manufacturer may void the user's authority to operate this device.

NOTE: This equipment has been tested and found to comply with the limits for a Class A digital device, pursuant to Part 15 of the FCC Rules. These limits are designed to provide reasonable protection against harmful interference when the equipment is operated in a commercial environment. This equipment generates, uses, and can radiate radio frequency energy and, if not installed and used in accordance with the instruction manual, may cause harmful interference with radio communications. Operation of this equipment in a residential area is likely to cause harmful interference, in which case the user will be required to correct the interference at his own expense.

NOTE: This equipment has been tested and found to comply with the limits for a Class B digital device, pursuant to Part 15 of the FCC Rules. These limits are designed to provide reasonable protection against harmful interference in a residential installation. This equipment generates, uses and can radiate radio frequency energy and, if not installed and used in accordance with the instructions, may cause harmful interference to radio communications. However, there is no guarantee that interference will not occur in a particular installation. If this equipment does cause harmful interference with radio or television reception, which can be determined by turning the equipment off and on, the user is encouraged to try to correct the interference by one or more of the following measures:

- Reorient or relocate the receiving antenna.
- Increase the separation between the equipment and receiver.
- Connect the equipment to an outlet on a circuit different from that to which the receiver is connected.

Health And Safety Precautions:

- Use proper anti-static precautions while performing the installation of your hard drives into this drive enclosure. Failure to do so can cause damage to your drive mechanisms, and / or the hard drive enclosure.
- Read this User's Guide carefully, and follow the correct procedure when setting up the device.
- Do not open your hard drive or attempt to disassemble or modify it. Never insert any metallic object into the drive to avoid any risk of electrical shock, fire, short-circuiting or dangerous emissions. Your hard drive contains no user-serviceable parts. If it appears to be malfunctioning, have it inspected by a qualified Other World Computing Technical Support representative.
- Never expose your device to rain, or use it near water, or in damp or wet conditions. Never place objects containing liquids on the drive, as they may spill into its openings. Doing so increases the risk of electrical shock, short-circuiting, fire or personal injury.

General Use Precautions:

- Do not expose the enclosure to temperatures outside the range of 5° C to 40° C (41° F to 104° F). Doing so may damage the drive or disfigure its casing. Avoid placing your drive near a source of heat or exposing it to sunlight (even through a window). Conversely, placing your drive in an environment that is too cold or humid may damage the unit.
- Always unplug the hard drive from the electrical outlet if there is a risk of lightning or if it will be unused for an extended period of time. Otherwise, there is an increased risk of electrical shock, short-circuiting or fire.
- Use only the power supply shipped with the device.
- Do not use the hard drive near other electrical appliances such as televisions, radios or speakers. Doing so may cause interference which will adversely affect the operation of the other products.
- Do not place the drive near sources of magnetic interference, such as computer displays, televisions or speakers. Magnetic interference can affect the operation and stability of your hard drive.
- Do not place heavy objects on top of the drive.
- If you detect a problem, consult the Troubleshooting section in this manual.
- Protect your hard drive from excessive exposure to dust during use or storage. Dust can build up inside the device, increasing the risk of damage or malfunction.
- Other World Computing recommends the use of normal glass cleaning products to keep the high lustre finish at its finest with this product. Be sure not to get any moisture inside the holes and if you do, allow time to air dry before use.
- Do not block the ventilation outlets on the front of the drive. These help to keep your drive cool during operation. Blocking the ventilation outlets may cause damage to your drive and cause an increased risk of short-circuiting or fire.

