



MERCURY ELITE PRO **MINI**

USB-C Bus Powered Storage Solution



Universally USB compatible

Plug and play with USB
Macs and PCs
as well as iPadOS, Android
and Chrome OS devices



EASY BACKUPS

Apple Time Machine and
Windows File History ready



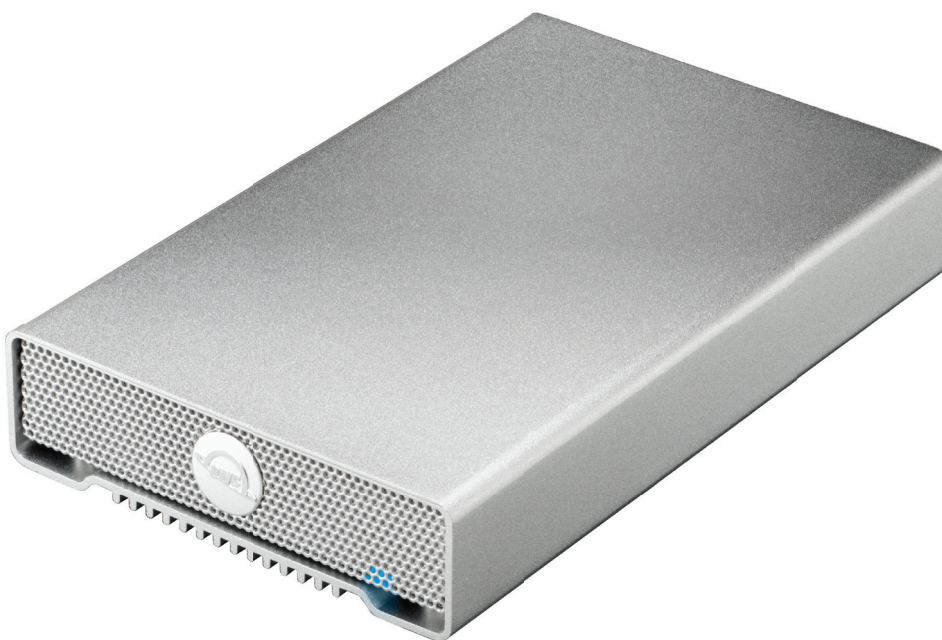
Real-World Fast

Up to 542MB/s test
proven performance



Fanless Cooling

Cool, nearly
silent operation



**ASSEMBLY MANUAL
& USER GUIDE**

TABLE OF CONTENTS

INTRODUCTION

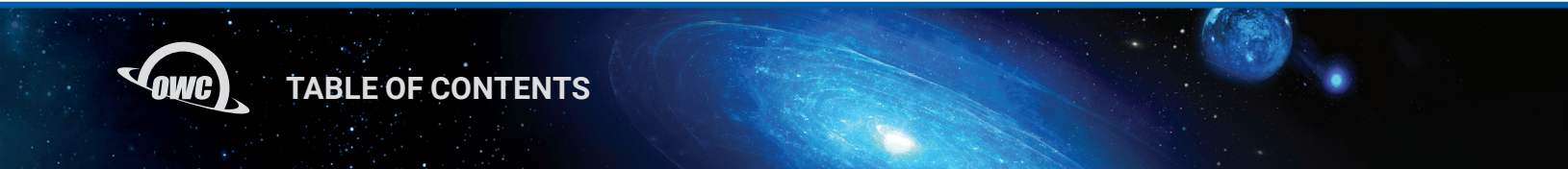
- 1.1 System Requirements3
- 1.2 Package Contents.....3
- 1.3 About This Manual.....3
- 1.4 Front View4
- 1.5 Rear View4
- 1.6 Usage Notes.....4

INSTALLATION

- 2.1 Assembly.....5
- 2.2 OWC Drive Guide.....6

SUPPORT RESOURCES

- 3.1 Troubleshooting6
- 3.2 About Data Backup6
- 3.3 Online Resources6
- 3.4 Contacting Technical Support6



INTRODUCTION

1.1 SYSTEM REQUIREMENTS

Hardware:

- Any Mac, PC, Chromebook, tablet, or phone with a USB or Thunderbolt (USB-C) port

Operating System:

- Mac OS X 10.6.8 or later, macOS 10.12.6 or later, Windows 7 or later, iPadOS 13 or later, Chrome OS, Android 10 or later, Linux

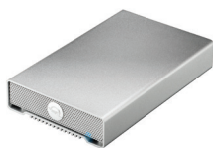
Supported Drives:

- 2.5-inch SATA drive up to 12.5mm height

Bootting:

- macOS 10.6.8 or later
- Booting not supported on Windows

1.2 PACKAGE CONTENTS



OWC Mercury Elite
Pro Mini



USB-C to USB-C Cable
with USB-A Adapter

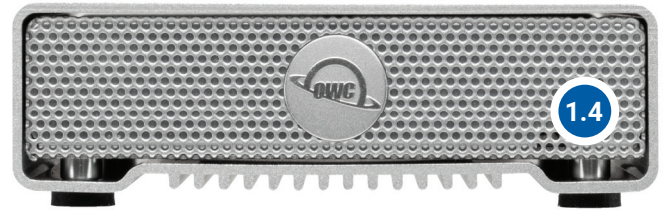
1.3 ABOUT THIS MANUAL

The images and descriptions may vary slightly between this manual and the unit shipped. Functions and features may change depending on the firmware version. The latest product details and warranty information can be found on the product web page. OWC's Limited Warranty is not transferable and subject to limitations.

1.4 FRONT VIEW

Power and activity LED

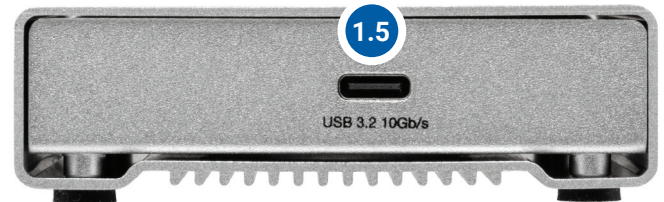
- Solid Blue = Power on and link established
- Flashing Blue = Data access (read/write)



1.5 REAR VIEW

Connectivity

- USB 3.2 (10Gb/s) Type-C port - Connect to a USB Type-C or Type-A port using the included USB Type-C cable and Type-C to Type-A adapter.



1.6 USAGE NOTES

For the safe removal of your drive and to ensure that no data is lost, always eject or unmount the corresponding disk from your operating system before disconnecting the device. You can use the methods described below to safely unmount the disk.

OS X/macOS:

- Drag the icon for the disk you wish to unmount to the trash can; OR
- Right-click the disk icon on the desktop, then click "Eject"; OR
- Highlight the disk on your Desktop and press Command-E.

Windows:

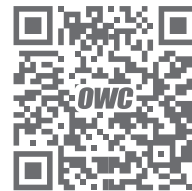
- Go to the System Tray (located in the lower right corner of your screen). Click on the "Eject" icon (a small green arrow over a hardware image).
- A message will appear, detailing the devices that the "Eject" icon controls, i.e., "Safely remove..." Click on this prompt.
- You will then see a message that says, "Safe to Remove Hardware." It is now safe to disconnect the Mercury Elite Pro mini from the computer.
- The steps above are applicable to Windows 10 build 1803 and earlier. If you are using Windows 10 build 1809 (October 2018) or later, you can eject the drive by clicking the 'Show hidden items' menu in the Taskbar, then clicking 'Safely Remove Hardware and Eject Media', and last select the 'Eject' option for this volume.



INSTALLATION

2.1 ASSEMBLY

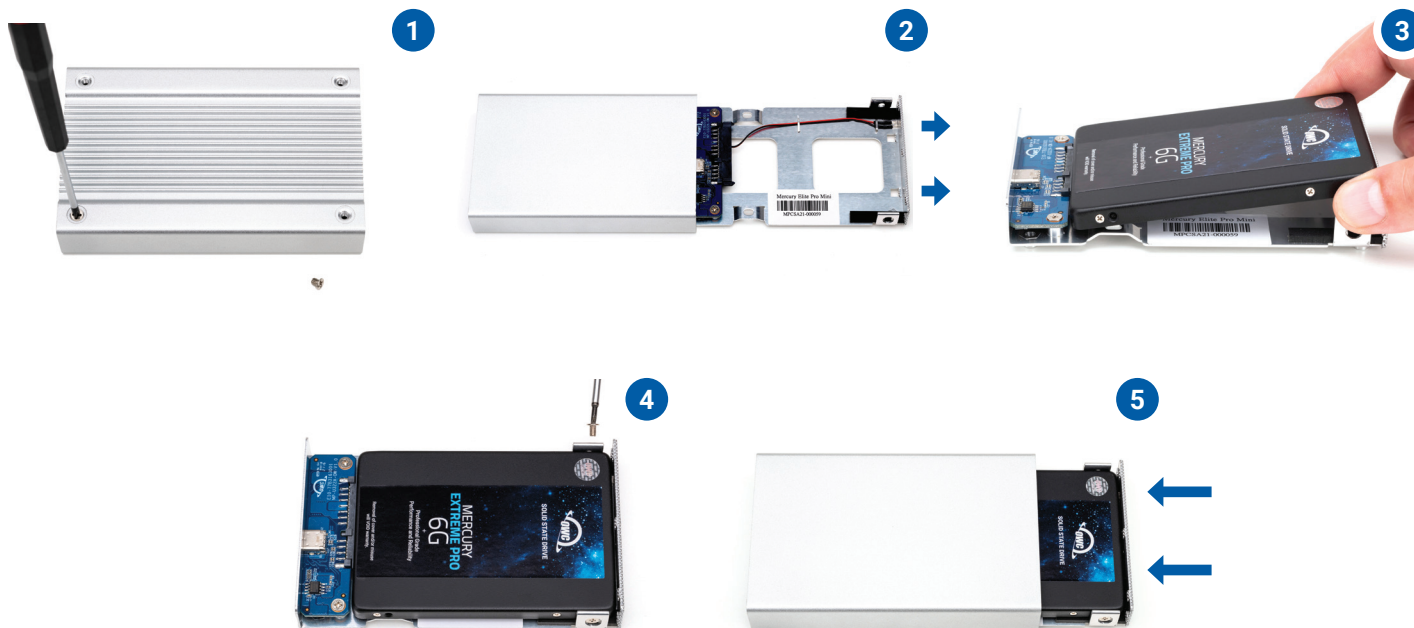
This section describes the process of installing a drive into the Mercury Elite Pro mini. If you purchased the Mercury Elite Pro mini with a drive pre-installed, please proceed to section 2.2 OWC Drive Guide. The Installation video can be watched by visiting go.owc.com/mercuryelitepromini/install or by scanning the Install QR Code:



- 1. Required tools: Phillips PH02 Driver** – Remove the two screws on the bottom side of the outer chassis.
- Push and slide out the inner chassis tray.
- Place the drive into the inner chassis tray and connect the drive into the SATA connector on the circuit board. Make sure the drive is fully seated
- 4. Required tools: Phillips PH01 Driver** – Secure the drive to the inner chassis using the 4 included drive screws.
- Slide the inner chassis and affixed drive back into the outer chassis. Secure again using the removed screws from Step 1 and the remaining 2 case screws in the ziptop bag.
- Move onto Section 3.x Formatting to complete the setup of the Mercury Elite Pro mini.



Ziptop bag containing
2x Case Screws,
4x Drive Screws,
4xRubber Feet



2.2 OWC DRIVE GUIDE

These directions apply if you purchased the Mercury Elite Pro mini with a drive pre-installed. Follow the steps below to use the OWC Drive Guide utility to format your Mercury Elite Pro mini for Mac or Windows. If you installed your own drive, please use the formatting method you are most familiar with or check Section 3.1 for a link to our online formatting tips.

- A. Connect the Mercury Elite Pro mini to your computer using the included data cable. If you prefer to use a different formatting utility, do so at this time and skip the rest of these steps.
- B. The disk will mount and your operating system will display it as "OWC SETUP".
Open the disk icon to view its contents.
- C. Double-click the OWC Drive Guide application. Follow the on-screen instructions to complete the formatting process. Once the formatting is finished the drive is ready to use.



SUPPORT RESOURCES

3.1 TROUBLESHOOTING

Begin troubleshooting by verifying the Mercury Elite Pro mini is connected to a computer or device. If the Mercury Elite Pro mini is still not working properly, unplug the USB-C cable connection from the Mercury Elite Pro mini, rotate the cable over, and plug back into the device. If the solution continues to not work properly, connect to a different port on the system, use a different data cable, or try a different system. If issues persist please consult section 3.4 for OWC technical support contact information.

Formatting

- To format the drive in your Mercury Elite Pro mini, please visit: www.owcdigital.com/format

Data Migration

- To see a step-by-step walkthrough for migrating your data from an old drive to a new one, go to: go.owc.com/datamigration

3.2 ABOUT DATA BACKUP

To ensure that your files are protected and to prevent data loss, we strongly suggest that you keep two copies of your data: one copy on your Mercury Elite Pro Mini and a second copy on either your internal drive or another storage medium, such as an optical backup, or on another external storage unit. Any data loss or corruption while using the Mercury Elite Pro Mini is the sole responsibility of the user, and under no circumstances may OWC, its parents, partners, affiliates, officers, employees, or agents be held liable for loss of the use of data including compensation of any kind or recovery of the data.

3.3 ONLINE RESOURCES

To access our online knowledge base, please visit: www.owcdigital.com/support/faq

3.4 CONTACTING TECHNICAL SUPPORT



Phone: M–F: 8am–6pm CT, Sat & Sun: Closed
1.866.692.7100 (N. America) | +1.815.338.4751 (Int'l)



Chat: Sun: 9am–midnight, M–Th: 12am–4am & 7am–midnight (closed from 4am–7am),
Fri: 12am–4am & 7am–10pm (closed from 4am–7am, and from 10pm–12am), Sat: 9am–5pm
www.owc.com/support



Email: Answered within 48 hours
www.owc.com/support



LEGAL INFORMATION

CHANGES:

The material in this document is for information purposes only and subject to change without notice. While reasonable efforts have been made in the preparation of this document to assure its accuracy, OWC, its parent, partners, affiliates, officers, employees, and agents assume no liability resulting from errors or omissions in this document, or from the use of the information contained herein. OWC reserves the right to make changes or revisions in the product design or the product manual without reservation and without obligation to notify any person of such revisions and changes.

FCC STATEMENT:

Warning! Modifications not authorized by the manufacturer may void the user's authority to operate this device. NOTE: This equipment has been tested and found to comply with the limits for a Class B digital device, pursuant to Part 15 of the FCC Rules. These limits are designed to provide reasonable protection against harmful interference in a residential installation. This equipment generates, uses and can radiate radio frequency energy and, if not installed and used in accordance with the instructions, may cause harmful interference to radio communications. However, there is no guarantee that interference will not occur in a particular installation. If this equipment does cause harmful interference with radio or television reception, which can be determined by turning the equipment off and on, the user is encouraged to try to correct the interference by one or more of the following measures:

- Reorient or relocate the receiving antenna.
- Increase the separation between the equipment and receiver.
- Connect the equipment to an outlet on a circuit different from that to which the receiver is connected.

WARRANTY:

Mercury Elite Pro Mini has a [1 Year OWC Limited Warranty](#) without drives pre-installed and a [3 Year OWC Limited Warranty](#) on solutions with drive pre-installed. For up-to-date product and warranty information, please visit the [product web page](#).

COPYRIGHTS AND TRADEMARKS:

No part of this publication may be reproduced, stored in a retrieval system, or transmitted in any form or by any means, electronic, mechanical, photocopying, recording or otherwise, without the prior written consent of OWC.

© 2021 Other World Computing, Inc. All rights reserved. OWC, the OWC logo, and Mercury Elite Pro Mini are trademarks of New Concepts Development Corporation, registered in the U.S. and/or other countries. Mac and macOS are trademarks of Apple Inc., registered in the U.S. and other countries. Other marks may be the trademark or registered trademark property of their owners.