

Other World Computing

OWC
macsales.com



MacBook Pro



OWC Mercury Elite Pro mini

Assembly Manual & User Guide

1 INTRODUCTION

1.1 SYSTEM REQUIREMENTS

- 1.1.1 Mac Requirements
- 1.1.2 PC Requirements
- 1.1.3 Supported Hard Drives

1.2 PACKAGE CONTENTS

1.3 USING THE OWC MERCURY ELITE PRO MINI

- 1.3.1 Connecting the OWC Mercury Elite Pro mini
- 1.3.2 Power Options for the OWC Mercury Elite Pro mini Quad interface model
- 1.3.3 Power Options for the OWC Mercury Elite Pro mini USB 3.0 & eSATA 6.0 Gb/s interface model
- 1.3.4 Powering on the OWC Mercury Elite Pro mini
- 1.3.5 LED Indicator

2 ASSEMBLY & INSTALLATION INSTRUCTIONS

2.1 HARD DRIVE ASSEMBLY & INSTALLATION

3 FORMATTING

3.1 MACINTOSH FORMATTING

3.2 REMOVING AN EXISTING GUID PARTITION

3.3 WINDOWS FORMATTING

4 TROUBLESHOOTING & TIPS

4.1 TROUBLESHOOTING

4.2 USAGE TIPS

5 APPENDIX

5.1 FAQ

5.2 ABOUT DATA PROTECTION

6 TECHNICAL SUPPORT

6.1 BEFORE CONTACTING TECHNICAL SUPPORT

6.2 TECHNICAL SUPPORT HOURS OF OPERATION

1 INTRODUCTION

Firmware, images, and descriptions may vary between this manual and the unit shipped. Functions and features may change depending on the firmware version. Visit the product webpage for the most recent specifications.

1.1 System Requirements

1.1.1 Mac Requirements

- Minimum PowerPC G4 CPU, 128MB RAM
- eSATA interface, Mac OS X 10.3 or later
- FireWire® interface, Mac OS X 10.2 or later (Quad model only)
- USB 2.0 interface, Mac OS X 10.2 or later
- USB 3.0 interface - see your interface card manufacturer for specifications (eSATA / USB 3.0 model only)

1.1.2 PC Requirements

- Minimum 500MHz Intel Pentium III CPU, 128MB RAM
- eSATA interface, Windows XP / Vista / Windows 7
- FireWire interface, Windows 2000 / XP / Vista / Windows 7 (Quad model only)
- USB 2.0 or USB 3.0 interface, Windows 2000 / XP / Vista / Windows 7

1.1.3 Supported Hard Drives

- Any 2.5" SATA 9.5mm or 12.5mm hard drive
- Any 2.5" SATA Solid State Drive (SSD)

1.2 Package Contents

Item

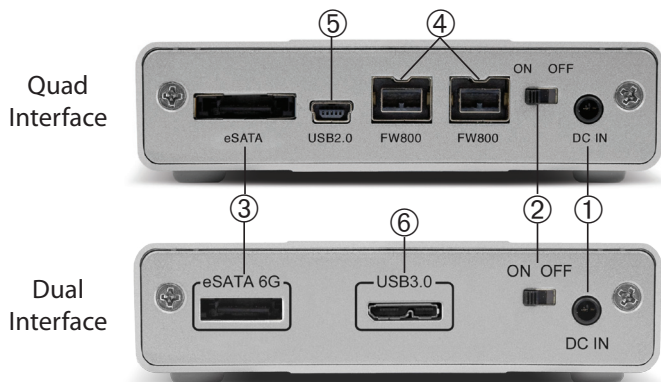
- ① OWC Mercury Elite Pro mini
- ② Flexible eSATA cable
- ③ USB 3.0 (A to Micro-B) cable*
- ④ Screws to attach hard drive
- ⑤ USB to DC power cable*
- ⑥ USB 2.0 (A to mini-B) cable*
- ⑦ FireWire 800 (1394b cable)*
- ⑧ Software CD bundle (not all models)
- ⑨ User Guide & Owner's Manual



* USB 2.0 or USB 3.0 cable included with all solutions. USB to Power cable only included with USB 3.0 / eSATA model. FireWire 800 cable only included with Quad Interface model.

1.3 Using your OWC Mercury Elite Pro mini

1.3.1 Connecting your OWC Mercury Elite Pro mini



Cable Connections:

The OWC Mercury Elite Pro mini family has multiple interfaces to work with any computer system.

- ① **DC IN port** - Use an auxiliary power source (external wall adapter, or USB power adapter plug) in this port. See section 1.5 for more details.
- ② **On/Off Switch** - Turn the OWC Mercury Elite Pro mini on and off here.
- ③ **eSATA Port** - Use with your eSATA interface for high speed connection.
NOTE: Requires external power source. See section 1.3.2 and 1.3.3 for more details.
- ④ **FireWire 800 (1394b) Ports** - Connect one FireWire 800 port to your computer using the included cable and use the other FireWire 800 port to connect additional peripherals.
- ⑤ **USB 2.0 mini Port** - Connect one of your computer's USB ports to the OWC Mercury Elite Pro mini here using the included cable.
- ⑥ **USB 3.0 micro Port** - Connect one of your computer's USB ports to the OWC Mercury Elite Pro mini here using the included cable.

1.3.2 Power Options for the OWC Mercury Elite Pro Quad Interface model

The OWC Mercury Elite Pro mini Quad Interface is designed to bus power using the FireWire 800 or USB 2.0 connection from your computer. If you choose to use the eSATA interface, connect both the FireWire (either 800-800 or 800-400) and eSATA cables to your computer, the OWC Mercury Elite Pro mini will use the power provided by the FireWire interface to power the drive as the eSATA connection is data only. You can also purchase a separate power adapter, if your computer does not have a FireWire connection. That adapter is available at:

<http://eshop.macsales.com/item/Other%20World%20Computing/MOTGPWR/>

1.3.3 Power Options for the OWC Mercury Elite Pro mini USB 3.0 & eSATA 6.0 Gb/s interface model

The OWC Mercury Elite Pro mini Dual Interface is designed to bus power using the USB 3.0 connection from your computer. If you choose to use the eSATA interface, connect USB to DC Power cable to your computer, the OWC Mercury Elite Pro mini will use the power provided by the USB interface to power the drive as the eSATA connection is data only. You can also purchase a separate power adapter, if your computer does not have a USB connection. That adapter is available at:

<http://eshop.macsales.com/item/Other%20World%20Computing/MOTGPWR/>

1.3.4 Powering on the OWC Mercury Elite Pro mini

To use the OWC Mercury Elite Pro mini, connect your preferred interface cable to the drive and the computer. Turn the power switch to the ON position, and verify the blue LED on the front of the drive is illuminated. Your drive should mount on your computer's desktop, or a dialog box will appear if you have a new, unformatted drive installed.

1.3.5 LED Indicator

The OWC Mercury Elite Pro mini has a single blue LED at the front of the hard drive enclosure. It will illuminate blue when powered on, and flash during drive activity (both reading and writing).

2 ASSEMBLY & INSTALLATION INSTRUCTIONS

This guide will get you up and running quickly, demonstrating how to install your own 2.5" hard drive into the OWC Mercury Elite Pro mini enclosure.



Your computer is a static-sensitive device. It is susceptible to invisible damage if not protected during installation.

We recommend proper grounding by using a grounding strap. Make sure to work in a clean and static-free area, and avoid wearing clothing that retains static charges.

For more information, please visit <http://www.macsales.com/static>

Got tools? If you don't have the tools necessary to complete this installation, Newer Technology has a fantastic toolkit available that includes everything you need to perform this installation as well as most common computer hardware installations.



It's available at:

<http://www.macsales.com/tools>

2.1 Hard Drive Assembly & Installation



Use a Phillips P0 screwdriver to remove the 2 screws holding the rear backplane cover in place.

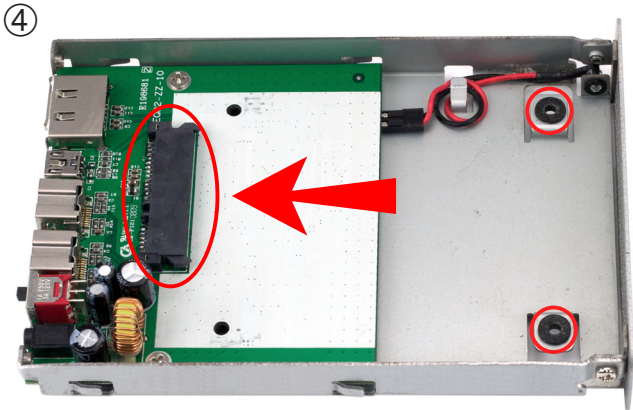


② Once the screws are removed, the rear backplane cover will easily come off. Set it aside to continue.



③ From the rear of the enclosure, press inwards on the rear ports to slide the inner chassis out towards the front of the enclosure.

Once you have opened the enclosure, remove the bag of screws you will find inside it to use in a future step.



Once the inner chassis is removed from the outer enclosure, you will see the SATA data & power combo connector where your 2.5" SATA drive will attach to the bridge card.

5



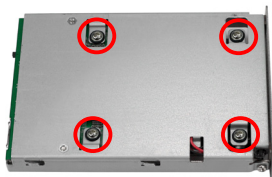
Place your drive mechanism into the chassis, lining up the connector, and slide the drive towards the ports to firmly affix the drive into the SATA connector.

6



With your fingers holding the drive mechanism into the enclosure, turn it over so you can see the screw holes that you will need to use in the next step.

- ⑦ Using the Phillips P0 screwdriver and the included screws from the plastic bag, attach the drive mechanism to the enclosure through the rubber grommets.



Once you have installed the drive mechanism, take the outer enclosure and look at the end of it. You will see on the bottom there are 2 metal channels; on one side of the outer enclosure the metal channel extends all the way to the edge of the outer enclosure, and the other side is inset to allow the rear port cover to fit flush when attached.

Slide the inner chassis through the outer enclosure from the side that has the metal channels flush with the edge. Place the rear port cover onto the outer enclosure in the inset in the metal channel and attach it using the Phillips P0 screwdriver and the 2 Phillips screws you removed to begin the assembly process.

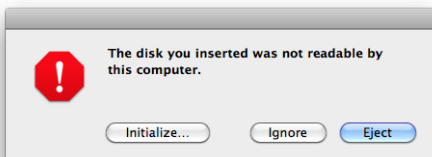
For information on how to connect your OWC Mercury Elite Pro mini to your computer, please refer to section 1.3: Using your OWC Mercury Elite Pro mini before proceeding.

3 FORMATTING

3.1 Formatting your OWC Mercury Elite Pro mini on a Macintosh with OS X (For a new drive, or to reformat an old drive)

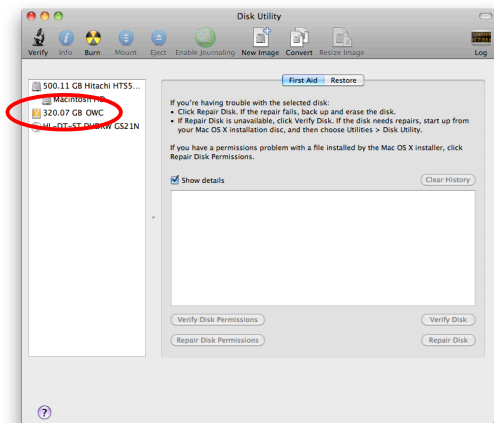
IMPORTANT NOTE: This procedure will erase all data on the hard drive in the OWC Mercury Elite Pro mini. Back up any important data before proceeding!

①



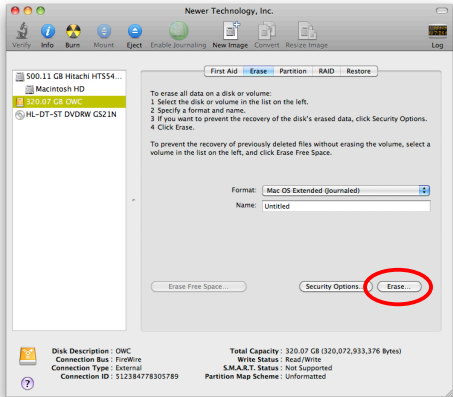
Click on the "Initialize" button. (If this does not appear, open Disk Utility located in /Applications/Utilities)

②



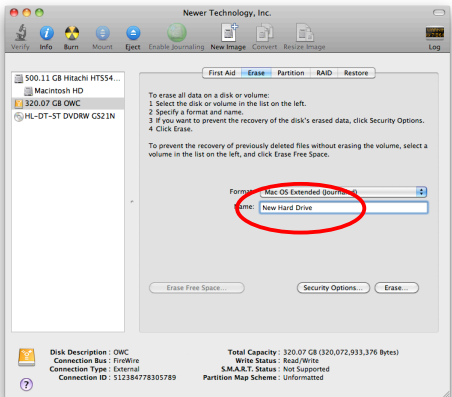
Select the device with no volumes attached to it; in this picture, that would be the 320.07 GB OWC device. Click on the picture of the drive icon next to the text.

③



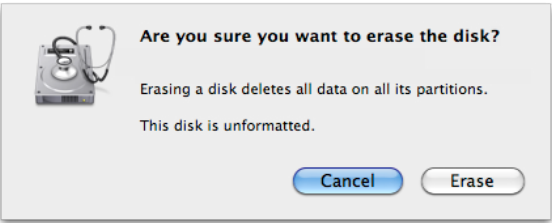
Once you've selected the OWC device, you will notice the above change in the Disk Utility application. Click on the "Erase" tab in this picture.

④



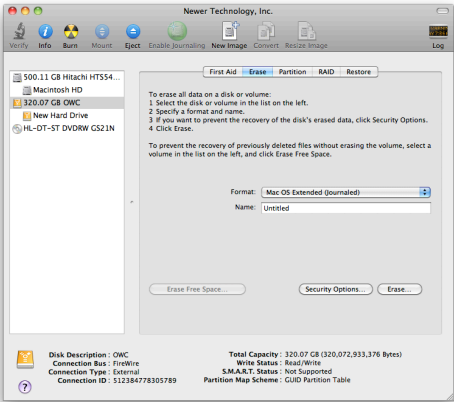
You then need to name the volume that you want to format, and erase it. Type the name of the volume in the space provided and then choose your desired format (Mac OS Extended (Journaled) is default, and preferred). Click the Erase button.

5



Click the erase button to confirm you wish to erase the disk.

6



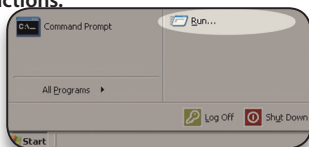
After a few moments, the erase command will complete and the OWC Mercury Elite Pro mini volume will mount on your desktop. You can quit Disk Utility and start using your drive.

3.2 Removing the GUID Partition Scheme

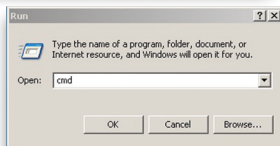
Only for XP, 2000, ME and earlier. (XP 64-BIT, Vista & Windows 7 can continue to the next section)

If you are not installing a brand-new hard drive into your enclosure, it may have a GUID drive partition already installed on it, especially if it was originally used with a Macintosh. Unfortunately, this is not readable by Windows without special software. If you wish to use your storage solution on a computer running Windows, you will need to repartition and reformat using the following instructions.

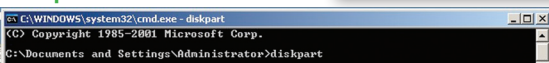
- ① Go to the DOS command prompt by selecting "Run" from the Start Menu.



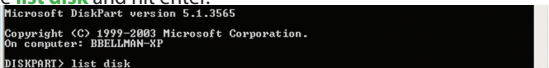
- ② Type **cmd** into the text box, and click the "OK" button.



- ③ Type **diskpart** and hit enter.



- ④ Type **list disk** and hit enter.



- ⑤ Type **select disk x** replacing x with the number of the disk you want to reformat. (Typically, you will see an asterisk (*) under "GPT" for the disk requiring formatting.)



WARNING: The **clean** command will destroy ALL data on the disk you run it on!!! Be sure there is **nothing** you need to keep on your drive before proceeding.

- ⑥ Type **clean** and hit enter.



- ⑦ Type **exit** and hit enter.

- ⑧ Close the command prompt window.

You may now proceed with formatting the drive.

3.3 Formatting your OWC Mercury Elite Pro mini on Windows 2000 and later

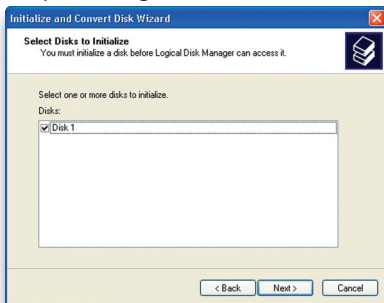
Instructions for other operating systems can be found at <http://www.macsales.com/format>.

IMPORTANT NOTE: This procedure will erase all data on your hard disk drives in the OWC Mercury Elite Pro mini. Back up any important data before proceeding!

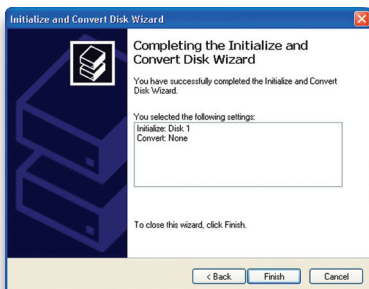
① With the drive connected to the computer and powered on, right click on the “My Computer” icon and select “Manage” from the menu. The “Initialize and Convert Disk Wizard” window should appear.



If the Wizard does not appear, expand the Storage menu by clicking on the plus (+) sign. Then, right click next to the disk number of the drive that you have just connected and click Initialize to bring up the Wizard.

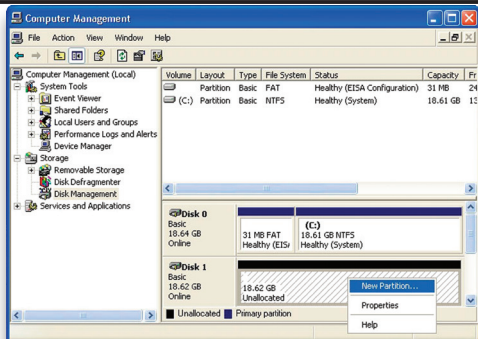


② In the next window, there should be only one drive listed. That will be the drive that you connected via eSATA, FireWire or USB. Make sure the box next to the drive name is checked and click “Next.”

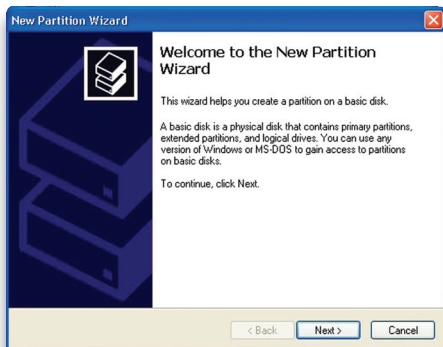


③ The Wizard will perform its tasks, and you will get the following screen. You may click “Finish.”

④ Your drive will appear similar to how Disk 1 does below. Notice that the space on the lower right reads as “Unallocated.” Right click in this space and choose “New Partition.”



⑤ The “New Partition Wizard” will launch. Click “Next” to continue.



⑥ Specify your partition type as “Primary,” and click “Next.”

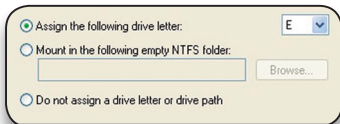
Select the partition you want to create:

- ☒ Primary partition
- ☐ Extended partition
- ☐ Logical drive

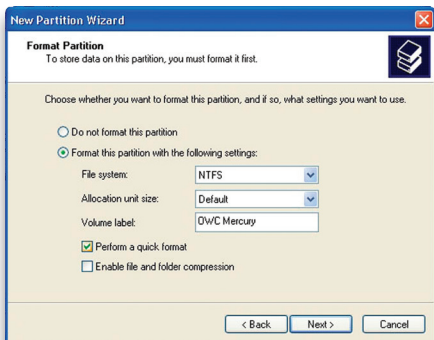
⑦ The wizard will display the maximum partition size for your drive. It is strongly recommended that you **do not** change the default value. Click “Next”

Maximum disk space in megabytes (MB): 19069
 Minimum disk space in MB: 8
 Partition size in MB: 19069

⑧ If you like, you can specify the drive letter designation for your new drive. Otherwise, one will automatically be assigned. Click “Next.”

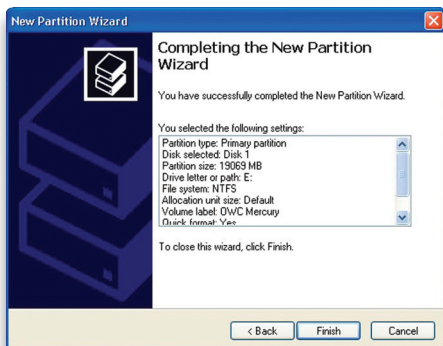


⑨ Before you can use the drive, it must be formatted. On most systems running Windows 2000 or later, it is advisable to specify the file system as NTFS. Leave the Allocation unit size as “Default,” and feel free to give the drive whatever name you prefer. Be sure to check the box “Perform a quick format.”

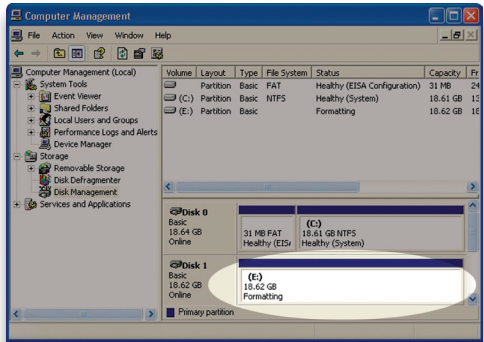


If you do not, it will likely take several hours for your drive to format. Click “Next.”

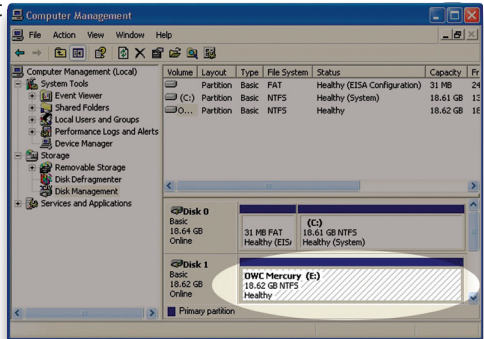
⑩ At the end of the Wizard, you will see a summary of the information that you specified during the previous steps. Click “Finish.”



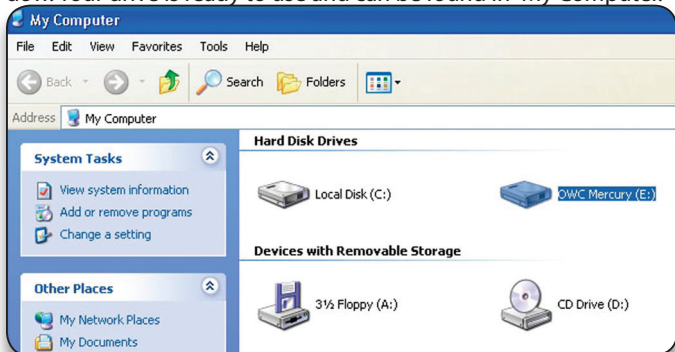
⑪ Once you have finished with the formatting wizard, you will see that your new drive (represented as “Disk E” in this case) will display a message of “Formatting.” This should only take a couple of minutes if you chose the quick format option.



⑫ After a moment or two, the drive’s status will change from “Formatting” to “Healthy.”



⑬ At this point, you may close the Computer Management window. Your drive is ready to use and can be found in “My Computer.”



Using your new Storage Solution on both Macs and PCs?

MacDrive™ takes the guesswork out of sharing files. Whether you are transferring files between home and the office, a class room lab and your dorm room or even on the same computer, MacDrive makes it painless. In fact, you'll hardly know MacDrive is working.

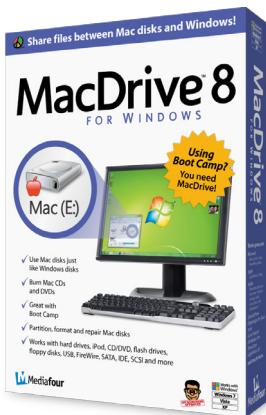
Once installed MacDrive will automatically give you access to any Mac disk you pop into your computer. MacDrive even puts an “apple” icon on the Mac disk, just to keep things clear.

You can access files on the Mac disk just like you would with a Windows formatted disk. Open files from the disk or from within a program. Mac files automatically get the right icons and file name extensions under both Windows and Mac OS.

Works great with software from Microsoft, Adobe, Quark, FileMaker, Avid, Digidesign, Corel, NewTek and more.

You can find MacDrive at:

<http://www.macsales.com/macdrive>



4 TROUBLESHOOTING & TIPS

4.1 Troubleshooting

Some of the most simple problems can be traced to power or connectivity issues. Verify that your cables (both ends!) are properly plugged into the computer and storage solution. If they are, and the storage solution is still not working properly, try connecting to another interface and see if the device works properly. If these suggestions do not work, try the OWC Mercury Elite Pro mini on a different computer, if available to you.

If the blue power light is not coming on at the front of the OWC Mercury Elite Pro mini, try a different interface or a dedicated power adapter.

OWC Mercury Elite Pro mini models can also be bus powered using a “Y” USB adapter cable if your computer’s USB port does not provide enough power to use the OWC Mercury Elite Pro mini Quad, OWC offers custom “Y” cables that will draw power from two separate USB ports - they are available for purchase at: <http://eshop.macsales.com/search/auxiliary>

4.2 Tips

To properly dismount any connected hard drives from your computer, you need to follow a few simple steps.

• For Macintosh systems:

There are two methods to unmount disks with Macintosh systems. Either drag the icon for the hard disk you wish to dismount to the trash can, or click the eject icon next to the hard disk name in under the “DEVICES” tab in the sidebar in any finder window.

• For Windows systems:

1. Go to the System Tray (located in the lower right corner of your screen). Click on the Eject icon (a small green arrow over a hardware image).
2. A message will appear, detailing the devices that the Eject icon controls. i.e. “Safely remove...” Click on this prompt.
3. You will then be given the following message. “Safe to Remove Hardware”. It is now safe to unhook the OWC Mercury Elite Pro mini.

5 APPENDIX

5.1 FAQ

Q: How do I format my storage solution?

A: OWC has detailed instructions online for most popular operating systems, located at: http://eshop.macsales.com/tech_center/formatting.cfm

Q: What file system should I choose when formatting my drive?

A: This will depend on how you want to use the drive, but in general we recommend:

- Mac OS X : HFS + (Mac OS Extended)
- Windows 2000/XP/Vista/7 : NTFS
- For cross-platform compatibility, FAT32 will work, but single file sizes are limited to 4GB. Other options using 3rd party software exist but are not covered here.

Q: Will the hard drive spin down when my computer goes to sleep or into stand-by mode?

A: Yes, it will spin down to save energy. It will take about 30 seconds to access your data after being in sleep or stand-by mode.

5.2 About Data Protection

To ensure that your files are protected and to prevent the loss of your data, we strongly suggest that you keep two copies of your data: one copy on your OWC Mercury Elite Pro mini, and a second copy on either your internal hard drive or another storage medium, such as an optical backup, or on a second external hard drive. Any data loss or corruption while using the OWC Mercury Elite Pro mini is the sole responsibility of the user, and under no circumstances will Other World Computing be held liable for compensation or the recovery of any lost data.

6 TECHNICAL SUPPORT

6.1 Before Contacting Technical Support

- Read this manual and review Chapter 4: Troubleshooting & Tips.
- Try to confirm the problem is with the hard drive. If you have a second computer, move the enclosure to that system and verify that the solution does not function with that machine.

- Visit our tech center for more support suggestions, including FAQs.

http://eshop.macsales.com/tech_center/index.cfm

If you still need support, please have the following available to you:

- The serial number of the enclosure
- Your invoice number
- What operating system you are using
- Which kind and model of computer you are using

All of this will help speed your support contact along.

6.2 Technical Support Hours Of Operation

8AM - 8PM CST Monday - Friday

9AM - 4PM CST Saturday

By Telephone - (800) 275-4576 (North America only)

International customers please call (815) 338-8685

Live Chat is available during normal business hours as well. Visit:

<http://eshop.macsales.com> for more information.

Or, you can email. Submit your email at

<http://eshop.macsales.com/Service/Tech.cfm>

This page left blank intentionally

Copyrights:

Copyright © 2009-12 Other World Computing, Inc. All rights reserved. No part of this publication may be reproduced, stored in a retrieval system, or transmitted in any form or by any means, electronic, mechanical, photocopying, recording or otherwise, without the prior written consent of Other World Computing.

Changes:

The material in this document is for information only and subject to change without notice. While reasonable efforts have been made in the preparation of this document to assure its accuracy, Other World Computing assumes no liability resulting from errors or omissions in this document, or from the use of the information contained herein. Other World Computing reserves the right to make changes or revisions in the product design or the product manual without reservation and without obligation to notify any person of such revisions and changes.

FCC Statement:

Warning! Modifications not authorized by the manufacturer may void the user's authority to operate this device.

NOTE: This equipment has been tested and found to comply with the limits for a Class A digital device, pursuant to Part 15 of the FCC Rules. These limits are designed to provide reasonable protection against harmful interference when the equipment is operated in a commercial environment. This equipment generates, uses, and can radiate radio frequency energy and, if not installed and used in accordance with the instruction manual, may cause harmful interference with radio communications. Operation of this equipment in a residential area is likely to cause harmful interference, in which case the user will be required to correct the interference at his own expense.

NOTE: This equipment has been tested and found to comply with the limits for a Class B digital device, pursuant to Part 15 of the FCC Rules. These limits are designed to provide reasonable protection against harmful interference in a residential installation. This equipment generates, uses and can radiate radio frequency energy and, if not installed and used in accordance with the instructions, may cause harmful interference to radio communications. However, there is no guarantee that interference will not occur in a particular installation. If this equipment does cause harmful interference with radio or television reception, which can be determined by turning the equipment off and on, the user is encouraged to try to correct the interference by one or more of the following measures:

- Reorient or relocate the receiving antenna.
- Increase the separation between the equipment and receiver.
- Connect the equipment to an outlet on a circuit different from that to which the receiver is connected.

Health And Safety Precautions:

- Use proper anti-static precautions while performing the installation of your hard drives into this drive enclosure. Failure to do so can cause damage to your drive mechanisms, and / or the hard drive enclosure.
- Read this User's Guide carefully, and follow the correct procedure when setting up the device.
- Do not open your hard drive or attempt to disassemble or modify it. Never insert any metallic object into the drive to avoid any risk of electrical shock, fire, short-circuiting or dangerous emissions. Your hard drive contains no user-serviceable parts. If it appears to be malfunctioning, have it inspected by a qualified Other World Computing Technical Support representative.
- Never expose your device to rain, or use it near water, or in damp or wet conditions. Never place objects containing liquids on the drive, as they may spill into its openings. Doing so increases the risk of electrical shock, short-circuiting, fire or personal injury.

General Use Precautions:

- Do not expose the enclosure to temperatures outside the range of 5° C to 40° C (41° F to 104° F). Doing so may damage the drive or disfigure its casing. Avoid placing your drive near a source of heat or exposing it to sunlight (even through a window). Conversely, placing your drive in an environment that is too cold or humid may damage the unit.
- Always unplug the hard drive from the electrical outlet if there is a risk of lightning or if it will be unused for an extended period of time. Otherwise, there is an increased risk of electrical shock, short-circuiting or fire.
- Use only the power supply shipped with the device.
- Do not use the hard drive near other electrical appliances such as televisions, radios or speakers. Doing so may cause interference which will adversely affect the operation of the other products.
- Do not place the drive near sources of magnetic interference, such as computer displays, televisions or speakers. Magnetic interference can affect the operation and stability of your hard drive.
- Do not place heavy objects on top of the drive.
- If you detect a problem, consult the Troubleshooting section in this manual.
- Protect your hard drive from excessive exposure to dust during use or storage. Dust can build up inside the device, increasing the risk of damage or malfunction.
- Other World Computing recommends the use of normal glass cleaning products to keep the high lustre finish at its finest with this product. Be sure not to get any moisture inside the holes and if you do, allow time to air dry before use.
- Do not block the ventilation outlets on the front of the drive. These help to keep your drive cool during operation. Blocking the ventilation outlets may cause damage to your drive and cause an increased risk of short-circuiting or fire.

