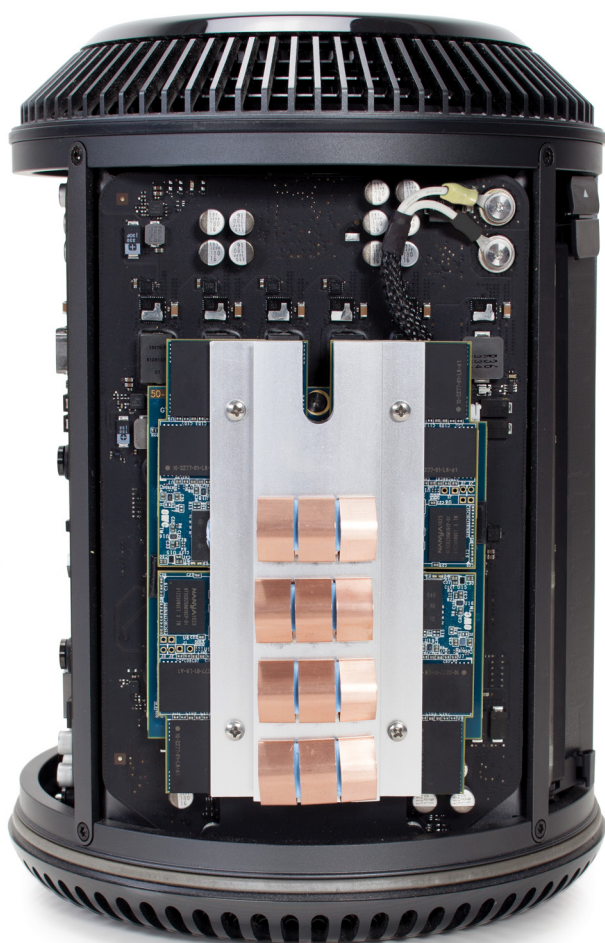




AURA SSD FOR MAC PRO

Installation Guide



| | |
|-----------------------------------------|--------------|
| Introduction | 1 |
| 1.1 System Requirements | |
| 1.2 Package Contents | |
| 1.3 About This Manual | |
| Installation | 2 |
| 2.1 Preparing the Mac Pro | |
| 2.2 Installing the Aura SSD For Mac Pro | |
| Support Resources | 5 |
| 3.1 Troubleshooting | |
| 3.2 About Data Backup | |
| 3.3 Online Resources | |
| 3.4 Contacting Technical Support | |

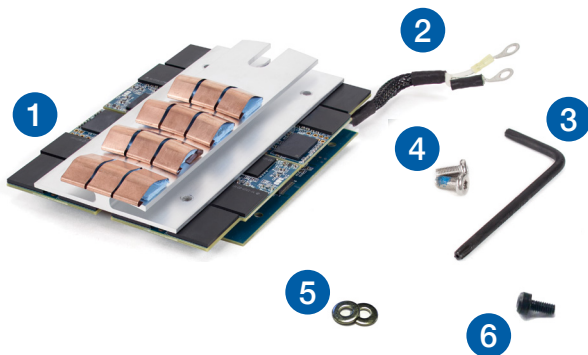
INTRODUCTION

1.1 System Requirements

- Apple Mac Pro 2013

1.2 Package Contents

1. OWC Aura SSD for Mac Pro
2. Power cable *
3. Torx T8 driver
4. Torx T8 security screws (2)
5. Washers (2)
6. Drive mount screw



* The color of the plastic sleeves and the wires they cover can vary in some cases. See **Section 2.2** for more details.



Your computer is a static-sensitive device. It is susceptible to invisible damage if not protected during installation. For proper grounding, we recommend using a grounding strap. Work in a clean, static-free area, and avoid wearing clothing that retains static charges. www.owcdigital.com/support/anti-static

1.3 About This Manual

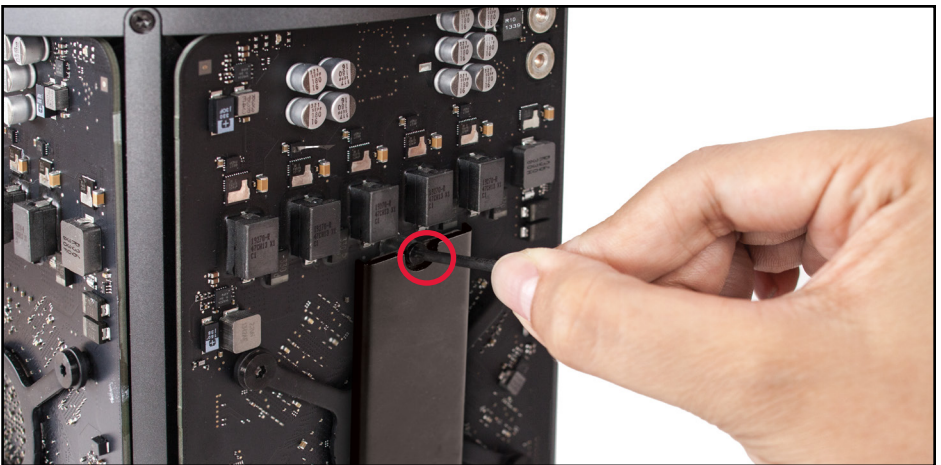
The images and descriptions may vary slightly between this manual and the unit shipped. Functions and features may change depending on the firmware version. The latest product details and warranty information can be found on the product web page. OWC's Limited Warranty is not transferable and subject to limitations.

2.1 Preparing the Mac Pro



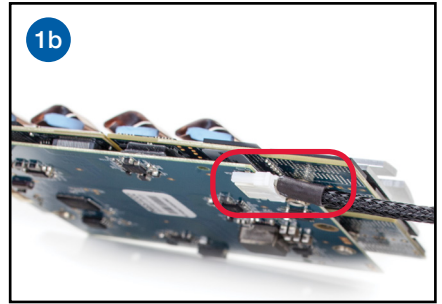
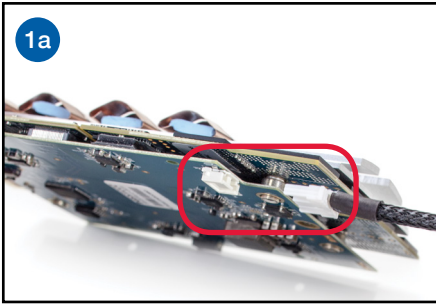
1. Turn off your Mac Pro and unplug all cables, including the power cable. Make sure the lock switch on the outer case is set to the unlocked position (circled at left), then remove the outer case by lifting it straight up. Set aside the outer case and proceed to the next step.

2. Use the included driver to remove the Torx T8 screw from the end of the SSD, as shown below. When the screw has been removed, lift the SSD out of the connector and set the SSD aside. **Notes:** the screw that was removed in this step will not be used to mount the Aura SSD; store original screw in a safe place. The Apple SSD can also be installed into an OWC Envoy Pro enclosure.

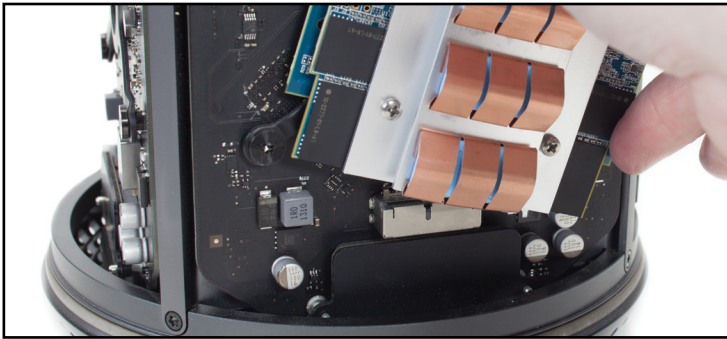


2.2 Installing the Aura SSD For Mac Pro

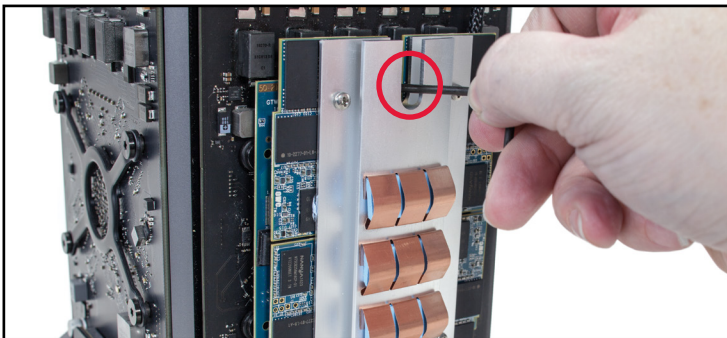
1. Attach the included power cable to the Aura SSD, as shown below. The white connector on the end of the cable snaps into the white connector on the end of the SSD.



2. Install the SSD into the Mac Pro, as shown below. Insert the SSD at a shallow angle, making sure that the power cable is out of the way.



3. Verify that the SSD is fully seated in the connector on the Mac Pro and that the screw hole in the SSD lines up with the screw hole in the Mac Pro. Then, use the included driver and drive mount screw to secure the SSD.



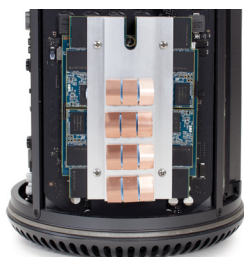
4. Using the included driver, remove the two Torx T8 security screws from the upper right-hand side of the Mac Pro (circled below). **NOTE:** The screws included with this kit are intended only for use with the Aura SSD. If you uninstall the Aura, you must use the original Apple screws to reinstall Apple's SSD; please store them in a safe place.



5. First, thread the two included washers onto the two included Torx T8 screws. Next, align the rings on the power cables with the two screw holes, then secure each cable to the power terminals as shown below. Make sure the screws are tightened enough that the power cables cannot rotate in place or move. **IMPORTANT: the wire with the black sleeve should always connect to the lower power terminal.**



6. Properly installed, the Aura SSD for Mac Pro and power cable will look like the picture below (left). Replace the outer case of the Mac Pro as shown (below right). When the outer case is seated fully, slide the lock switch back to its original locked position.



SUPPORT RESOURCES

3.1 Troubleshooting

If the OWC Aura SSD for Mac Pro is not available as a location to install OS X, make sure that it has been formatted properly. If the SSD is not shown in the Disk Utility, shut down the Mac Pro, unplug it from power and from all peripherals, and work backwards through the steps in **Section 2.2** to make sure that all components are properly installed. **In many cases problems can be resolved by re-seating the drive and reconnecting the cables.**

For more information on formatting visit: www.owcdigital.com/format

If problems persist, consult **Section 3.4** to contact technical support.

3.2 About Data Backup

To ensure that your files are protected and to prevent data loss, we strongly suggest that you keep two copies of your data: one copy on your Aura SSD for Mac Pro and a second copy on either your internal drive or another storage medium, such as an optical backup, or on another external storage unit. Any data loss or corruption while using the Aura SSD for Mac Pro is the sole responsibility of the user, and under no circumstances may OWC, its parent, partners, affiliates, officers, employees, or agents be held liable for loss of the use of data including compensation of any kind or recovery of the data.

3.3 Online Resources

To access our online knowledge base, which has answers to commonly asked questions relating to a range of products, please visit: www.owcdigital.com/support/faq

For Boot Camp support, visit: www.owcdigital.com/support/software-drivers

3.4 Contacting Technical Support



Phone: M–F, 8am–5pm Central Time
(866) 692-7100 (N. America) | +1 (815) 338-4751 (Int'l)



Chat: M–F, 8am–8pm Central Time
www.owcdigital.com/support



Email: Answered within 48 hours
www.owcdigital.com/support

Changes:

The material in this document is for information only and subject to change without notice. While reasonable efforts have been made in the preparation of this document to assure its accuracy, OWC, its parent, partners, affiliates, officers, employees, and agents assume no liability resulting from errors or omissions in this document, or from the use of the information contained herein. OWC reserves the right to make changes or revisions in the product design or the product manual without reservation and without obligation to notify any person of such revisions and changes.

FCC Statement:

Warning! Modifications not authorized by the manufacturer may void the user's authority to operate this device.

NOTE: This equipment has been tested and found to comply with the limits for a Class A digital device, pursuant to Part 15 of the FCC Rules. These limits are designed to provide reasonable protection against harmful interference when the equipment is operated in a commercial environment. This equipment generates, uses, and can radiate radio frequency energy and, if not installed and used in accordance with the instruction manual, may cause harmful interference with radio communications. Operation of this equipment in a residential area is likely to cause harmful interference, in which case the user will be required to correct the interference at his own expense.

NOTE: This equipment has been tested and found to comply with the limits for a Class B digital device, pursuant to Part 15 of the FCC Rules. These limits are designed to provide reasonable protection against harmful interference in a residential installation. This equipment generates, uses and can radiate radio frequency energy and, if not installed and used in accordance with the instructions, may cause harmful interference to radio communications. However, there is no guarantee that interference will not occur in a particular installation. If this equipment does cause harmful interference with radio or television reception, which can be determined by turning the equipment off and on, the user is encouraged to try to correct the interference by one or more of the following measures:

- Reorient or relocate the receiving antenna.
- Increase the separation between the equipment and receiver.
- Connect the equipment to an outlet on a circuit different from that to which the receiver is connected.

Health And Safety Precautions:

- Read this user guide carefully and follow the correct procedures when setting up the device.
- Use proper anti-static precautions while performing the installation of your SSD into the computer. Failure to do so can cause damage to your SSD and/or the computer.
- Do not attempt to disassemble or modify the device. To avoid any risk of electrical shock, fire, short-circuiting or dangerous emissions, never insert any metallic object into the device. If it appears to be malfunctioning, contact OWC technical support.
- Never expose your device to rain, or use it near water or in damp or wet conditions. Doing so increases the risk of electrical shock, short-circuiting, fire or personal injury.

General Use Precautions:

- To avoid damage, do not expose the device to temperatures outside the range of 5° C to 40° C (41° F to 104° F).
- Always unplug the computer from the electrical outlet if there is a risk of lightning or if it will be unused for an extended period of time. Otherwise, there is an increased risk of electrical shock, short-circuiting or fire.
- Protect your device from excessive exposure to dust during use or storage. Dust can build up inside the device, increasing the risk of damage or malfunction.
- Do not block any ventilation openings on your computer. These help to keep the device cool during operation. Blocking the ventilation openings may cause damage to the device and cause an increased risk of short-circuiting or fire.
- For up-to-date product and warranty information, please visit the product web page.

Please check the product web page for the most current product and warranty information.

Copyrights and Trademarks:

No part of this publication may be reproduced, stored in a retrieval system, or transmitted in any form or by any means, electronic, mechanical, photocopying, recording or otherwise, without the prior written consent of OWC.

© 2018 Other World Computing. All rights reserved.

OWC Envoy, OWC, and the OWC logo are trademarks of Other World Computing, Inc. registered in the U.S. Patent and Trademark Office and/or in Canada. Apple and Mac Pro are trademarks of Apple Inc., registered in the U.S. and other countries. Other marks may be the trademark or registered trademark property of their owners.



R10 12/14/17 DM

OWCMANSSDA13MP