



OWC Mercury Extreme G4

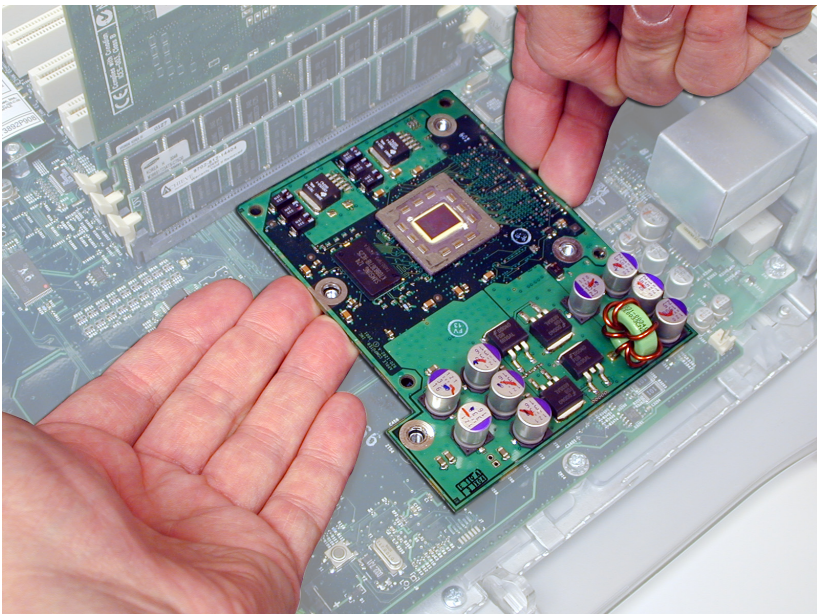
FCC Statement

NOTE: Other World Computing declares that this processor upgrade has been tested and found to comply with the limitations of a Class B digital device, pursuant to Part 15 of the FCC Rules & Regulations. These limits are designed to provide reasonable protection against harmful interference in a residential installation. This equipment generates, uses and can radiate radio frequency energy and, if not installed in accordance with these instructions, may cause harmful interference to radio communications. However, there is no guarantee that interference will not occur in any one particular installation, If this equipment does cause harmful interference to radio or television reception, this can be determined by turning the equipment this upgrade is installed into on and off. If this is determined to be the cause of harmful interference, the end user is encouraged to attempt to correct the interference by one or more of the following procedures:

- Connect the equipment to another electrical outlet, or use a line filtering device between the outlet and the computer
- Move the location of the receiving device and the computer
- Reorient the receiving antenna
- Increase the distance separating the receiver and the computer

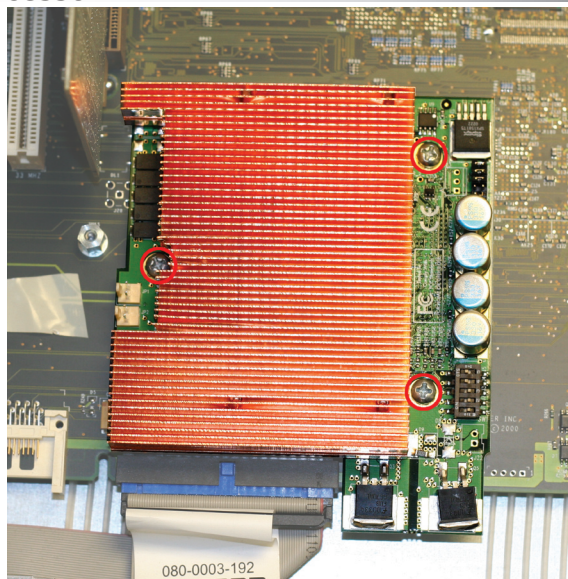
OWCMANMEG42

9. Remove Processor



Place your fingers gently underneath the edge of the processor daughtercard, and with your fingertips, pull straight up. Do not pull at an angle, you risk breaking the processor socket if you don't pull straight up.

10. Insert Processor



Remove the beige cap from the bottom of the upgrade card. Align the 3 circled screw holes, and gently but firmly press the upgrade card down onto the logic board. Insert the screws you removed from the original processor card.

Contact Information:

Other World Computing 1004 Courtaulds Drive Woodstock, IL 60098

Sales: (800) 275-4576
International: (815) 338-8658
Customer Service: (800) 275-4576
Tech Support: (815) 338-8685
24hr Fax: (815) 338-4332
For support via email submit your question here:
<http://eshop.macsales.com/Service/Tech.cfm>

Sales & Technical Support Hours (CST)

8:30AM-8:00PM Monday - Friday
 10:00AM-4:00PM - Saturday

Customer Service Hours (CST)

8:30AM-5:30PM Monday - Friday

*Entire contents copyright © 2006 Other World Computing.
 OWC product warranties are non-transferrable*

Troubleshooting Tips:

Boot Issues:

- Make certain you updated the firmware to version 4.2.8. If you did not, you will have to reinstall your original processor and boot into Mac OS 9 to perform this task.
- Press the reset button marked "S1" on the logic board. This is located on the corner of the logic board near the PCI slots on most machines. You will need to reset your date & time settings as well as any AppleTalk settings after doing this.
- Reset the PRAM on your computer by pressing and holding the command - option - P and R keys at startup until the machine chimes 3 times. You will need to reset your date & time settings as well as any AppleTalk settings after doing this.

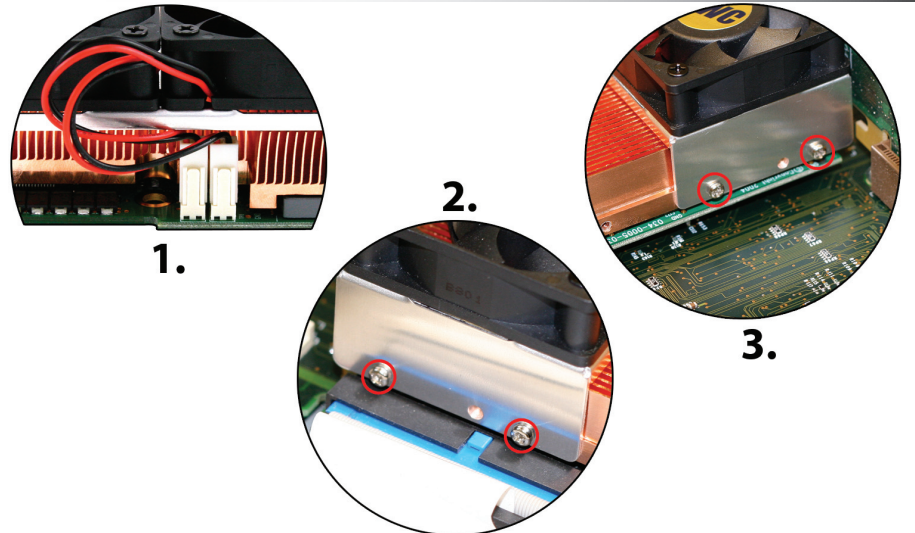
Final Cut Pro Issues / Full Switch Setting Chart:

- Final Cut Pro requires a valid speed to be reported correctly by Apple System Profiler. For detailed instructions about this issue, please visit our tech center at: http://eshop.macsales.com/tech_center/index.cfm This page also includes a full switch setting chart for your convenience.

Sleep Issues:

- The OWC Mercury Extreme G4 supports hard disk and display sleep in all configurations. With some system configurations, deep sleep may not be supported.

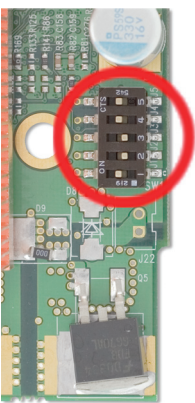
11. Attach Fan



Plug the 2 fan connectors onto the CPU upgrade daughtercard. Insert the 4 included small Phillips screws through the holes in the fan assembly and attach to the heatsink in the location shown. You may need to remove the video card to insert the screws more easily. Some systems do not have enough clearance to screw in the screws - 2 will hold the assembly without issue.

Jumper Settings - Your card is already preset for 100MHz speeds!

		OWC Mercury Extreme G4 Processor Jumper Settings					On = Switch UP (ON) Off = Switch Down (OFF)	
Bus Multiplier	Bus Speed	PROCESSOR		JUMPER SETTINGS				
		SPEED		J1	J2	J3	J4	J5
100MHz Systems	9x	900MHz	OFF	ON	ON	ON	ON	ON
	10x	1GHz	ON	OFF	ON	OFF	ON	ON
	11x	1.1GHz	ON	OFF	OFF	ON	ON	ON
	12x	1.2GHz	ON	OFF	ON	ON	ON	ON
	13x	1.3GHz	OFF	ON	OFF	ON	ON	ON
	14x	1.4GHz	ON	ON	OFF	OFF	ON	ON
133MHz Systems	15x	1.5GHz	OFF	OFF	OFF	ON	ON	ON
	6.5x	867MHz	OFF	ON	OFF	ON	OFF	OFF
	7x	933MHz	OFF	OFF	ON	OFF	OFF	OFF
	7.5x	1GHz	OFF	OFF	OFF	ON	OFF	OFF
	9x	1.2GHz	OFF	ON	ON	ON	ON	ON
	10x	1.33GHz	ON	OFF	ON	OFF	ON	ON
	10.5x	1.4GHz	ON	OFF	OFF	OFF	ON	ON
11x	1.467GHz	ON	OFF	OFF	ON	ON	ON	



Adjust jumper settings for your system - cards are preset for 100MHz operation, highest rated speed out of the box. You're all set!

1. Items Needed:

Thank you for purchasing your new OWC Mercury Extreme G4 AGP processor upgrade! Please read through this entire installation manual before proceeding with the upgrade to familiarize yourself with the process. Before installing any hardware component, it is recommended that you back up any important data from your hard drive. If you are planning on performing multiple upgrades, it is highly recommended that you complete one upgrade at a time before proceeding with the next.



ATTENTION! While performing these upgrade procedures, static safe conditions must be met. Do not walk around, hold all components by their edges, and do not touch the connector contacts.

Items needed to perform this upgrade

- #1 Phillips Screwdriver (Included!)
- Needle Nose Pliers (to remove heatsink clips)
- Internet Access (to update firmware, if needed)

2. System Requirements:

The OWC Mercury Extreme G4 processor is compatible with any Power Macintosh G4/AGP Graphics, Gigabit Ethernet, Digital Audio, QuickSilver or QuickSilver 2002 model. To determine which system you have, please refer to this online Apple document.

<http://docs.info.apple.com/article.html?artnum=58418>

The OWC Mercury Extreme G4 processor is compatible with Mac OS 9.2.1 and later, including all versions of Mac OS X.



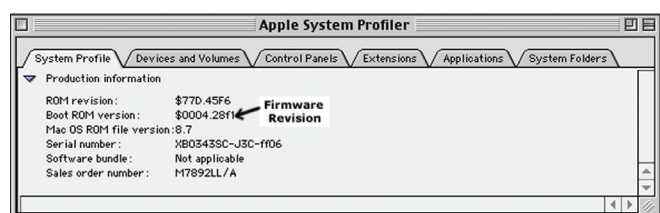
3. Firmware Upgrade



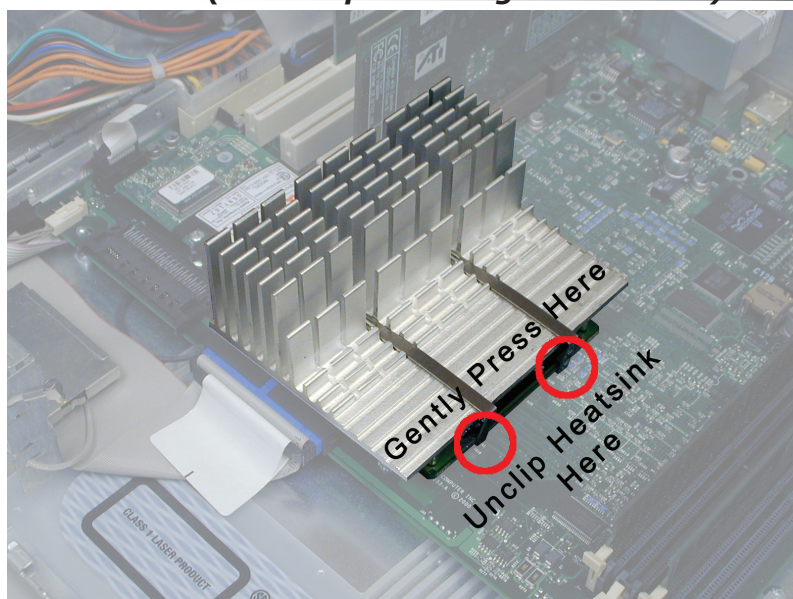
ATTENTION! If your computer is a Power Macintosh AGP Graphics, Gigabit Ethernet or Digital Audio model, you must upgrade it's firmware to version 4.2.8. This cannot be performed using Mac OS X, you must boot into Mac OS 9 to upgrade the firmware. Please refer to this online Apple document:

<http://docs.info.apple.com/article.html?artnum=120068>

To verify which revision of firmware your system is running, boot into OS 9 and open the Apple System Profiler from under the Apple Menu. The last drop down tab is "Production Information", and the second item listed is the Boot ROM Version. Your system must be at \$004.28f1 or later to proceed.



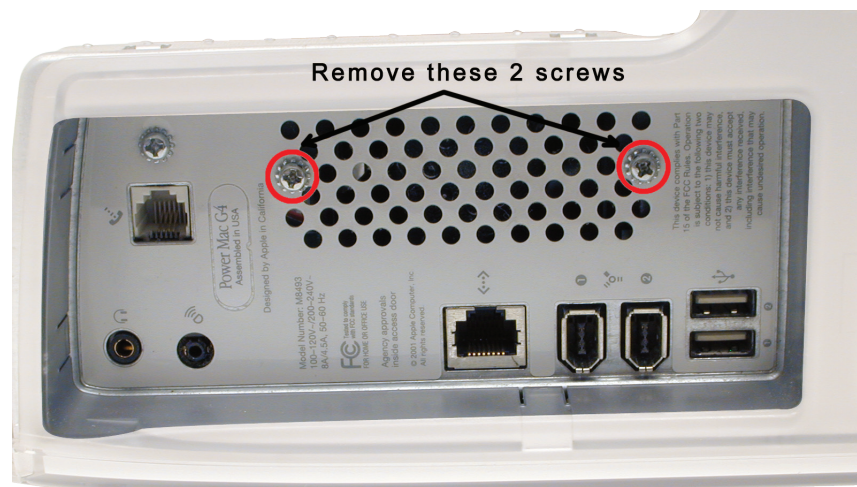
4. Remove Heatsink (AGP Graphics & Gigabit Ethernet)



Remove the heatsink from your logic board. Use the needle nose pliers to unhook the clips from the processor card.

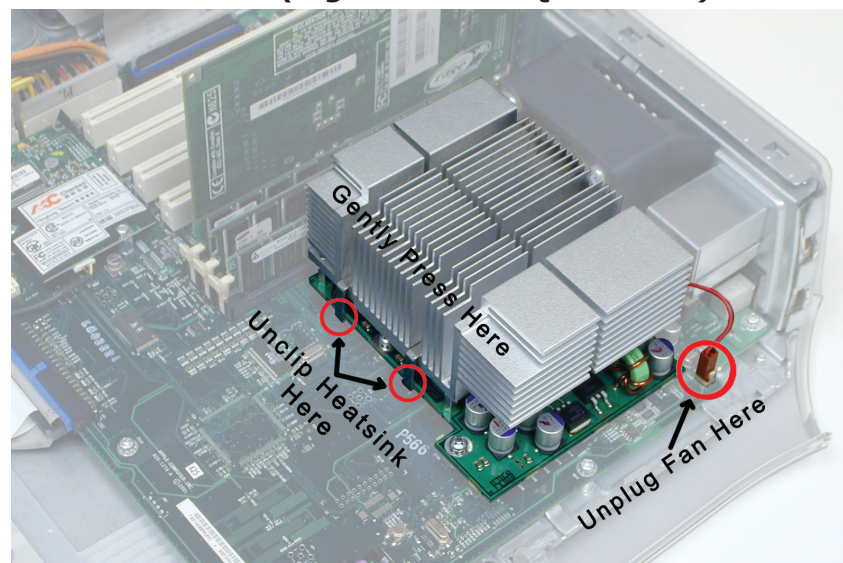
Skip to step 7 to remove the processor card.

5. QuickSilver & QuickSilver 2002 - Fan Removal



Unscrew these two screws from the rear port panel on your system. This will release the fan from behind the heatsink and allow you to unhook the rear heatsink clips in the next step. **You will not be reinstalling this fan.**

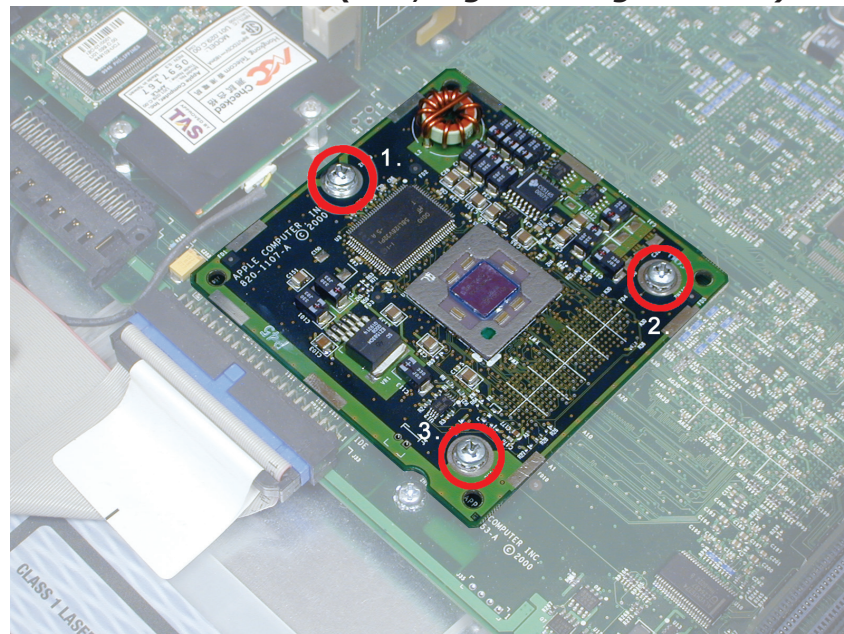
6. Remove Heatsink (Digital Audio & QuickSilver)



Remove the heatsink from your logic board. Use the needle nose pliers to unhook the clips from the processor card. If your system includes a processor fan or cover, unplug it and then remove by unclipping it and pulling straight up and out. You will not be reinstalling this heatsink, fan or shroud.

Skip to step 8 to remove the processor card.

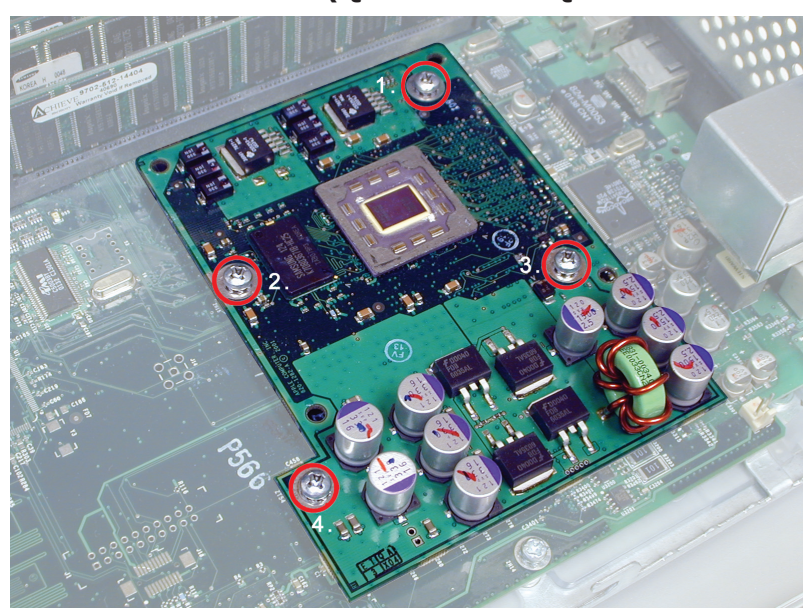
7. Remove Processor Card (AGP, Gigabit & Digital Audio)



Remove the 3 circled screws from the processor daughtercard and set them aside.

Skip to step 10 to install your new processor.

8. Remove Processor Card (QuickSilver & QuickSilver 2002)



Remove the 4 circled screws from the processor daughtercard and set them aside.