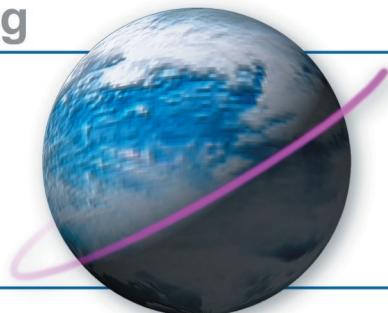




How to install a new optical drive in your Power Macintosh  
QuickSilver or QuickSilver 2002

Other World Computing

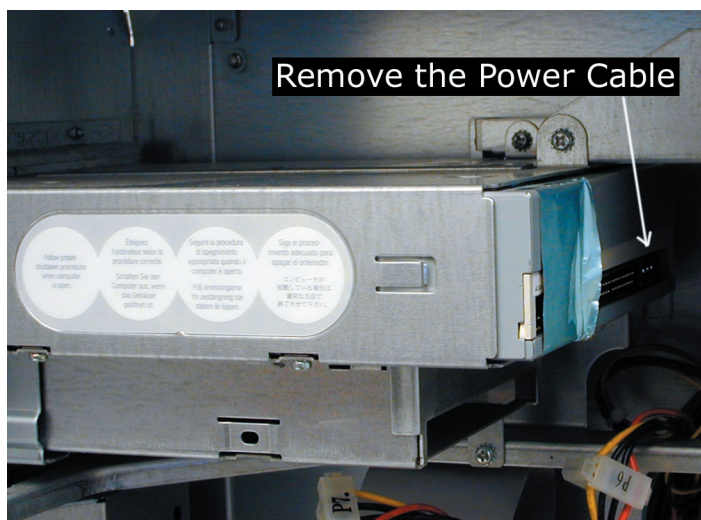
***OWC***



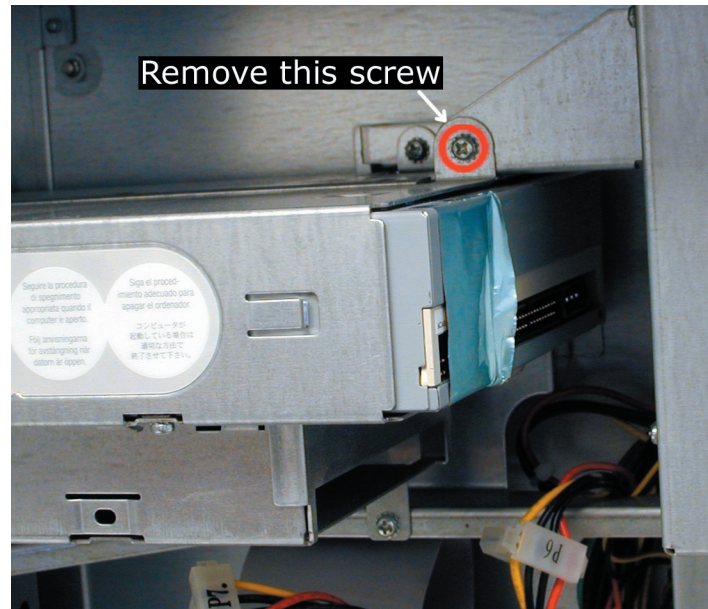
**Serving the Mac Universe since 1988**



Begin by opening your system and touching a metal component such as the CD-ROM bay to ground yourself. Always be aware of static while working in your system, you can use a grounding wrist strap if you wish. Reach in and unplug the IDE cable from the back of the optical drive you are removing. If you have a ZIP drive installed, you will want to remove the IDE cable from it as well (not installed, and not pictured).

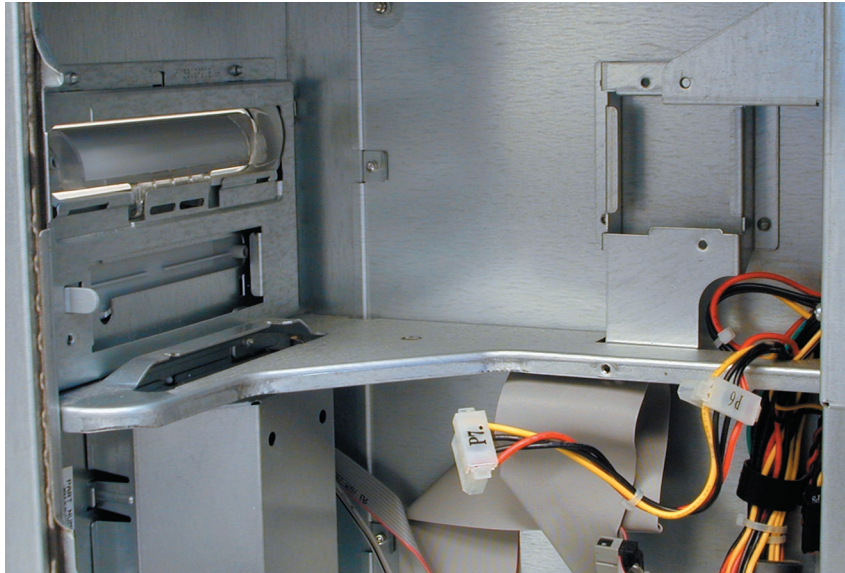


Reach in and gently remove the power cable from the back of your existing CD drive (and, if installed, your ZIP drive, not pictured). Lay them forward, out of the way, as shown.



On the metal drive carrier, you will see the above circled Phillips screws. Remove them and set aside.

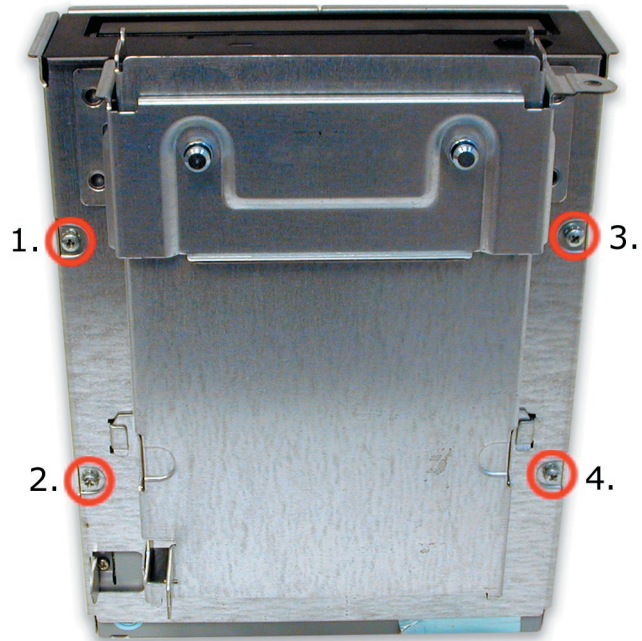




Once the two screws are removed, the CD drive bay will slide rearward and toward you, out of the computer.

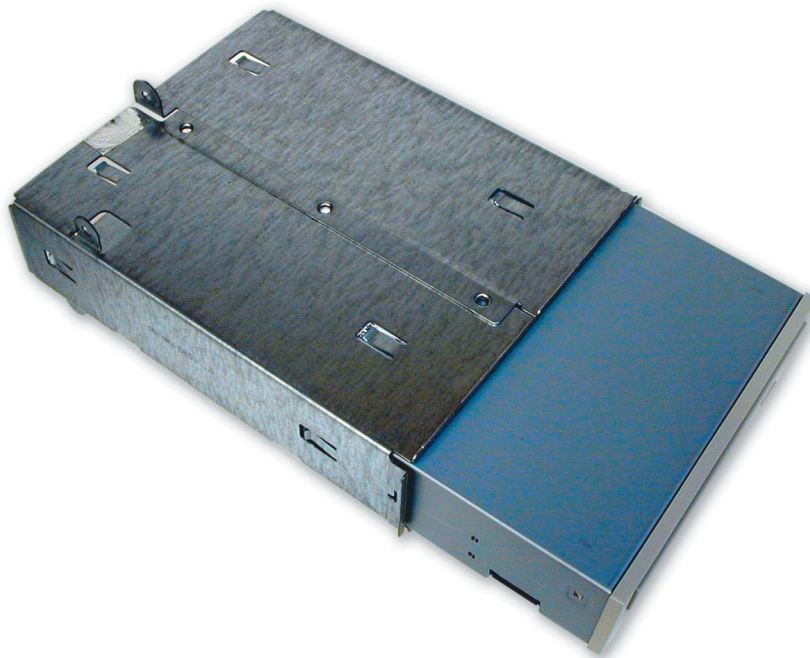
---

Remove 4 screws from bottom of drive



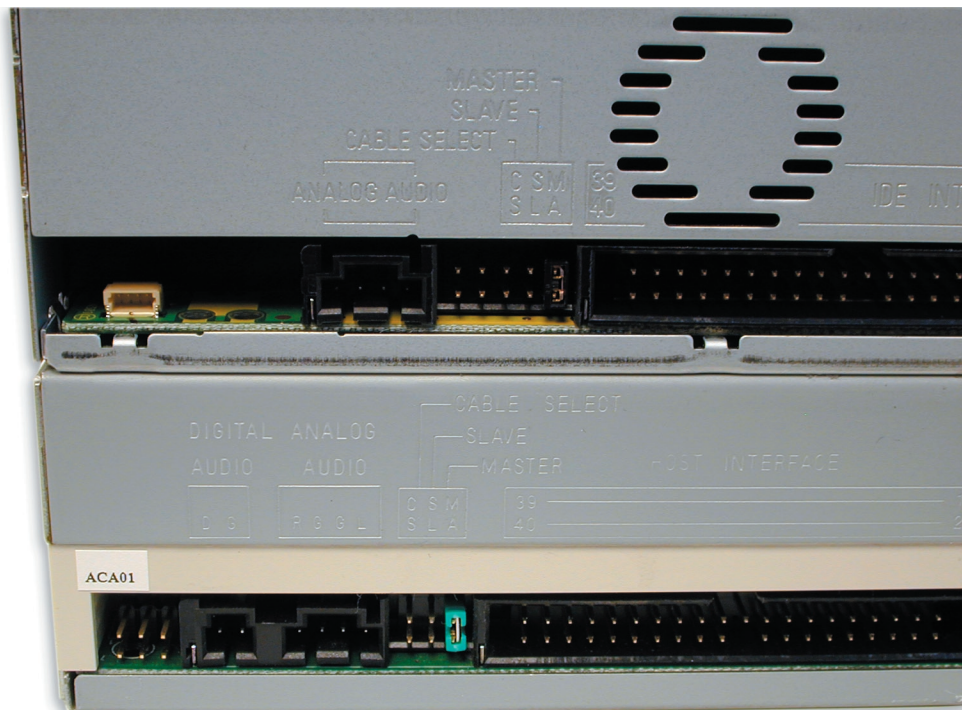
Remove the 4 screws shown here from the bottom of the CD drive carrier and you're ready to remove the old CD drive.





Slide the old CD drive from the CD-ROM housing out the front.

---

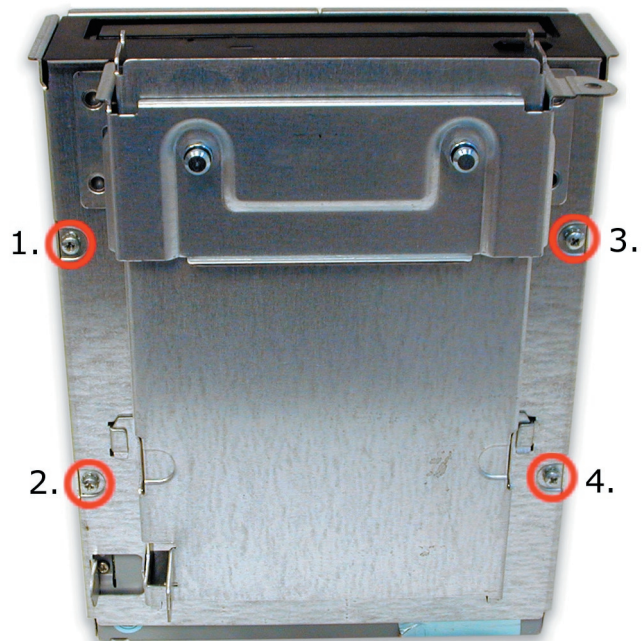


Make sure the jumper settings for "Master" and "Slave" are identical on the new drive and the old drive. Most often, the setting is Master. As long as you set the new drive to the same setting as the old one, you won't have a conflict.

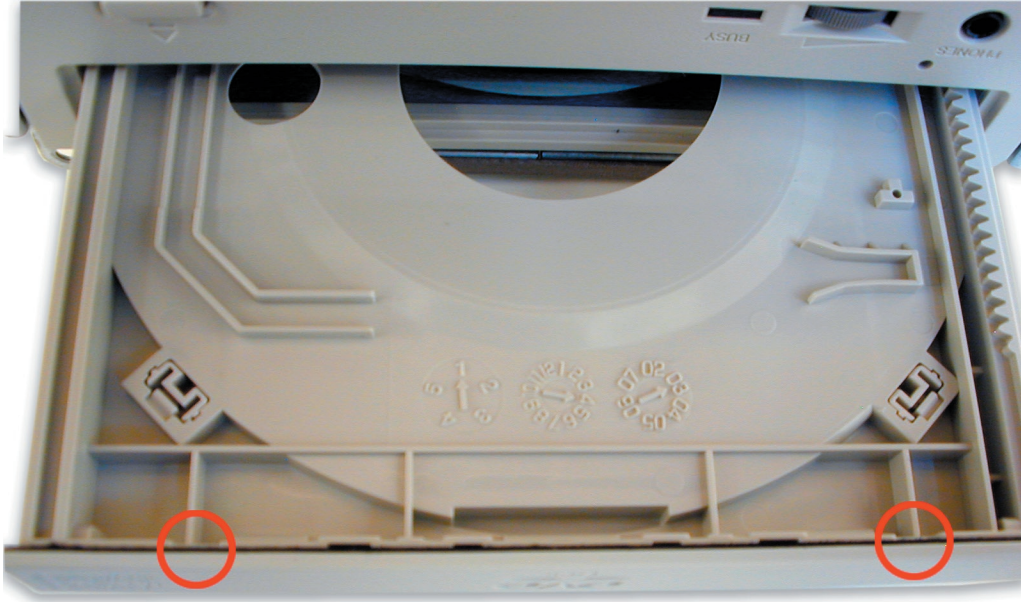


Slide the new CD drive from the CD-ROM housing in the front.

---



Insert the 4 screws shown here from the bottom of the CD drive carrier and you're ready to reinstall the new optical drive.



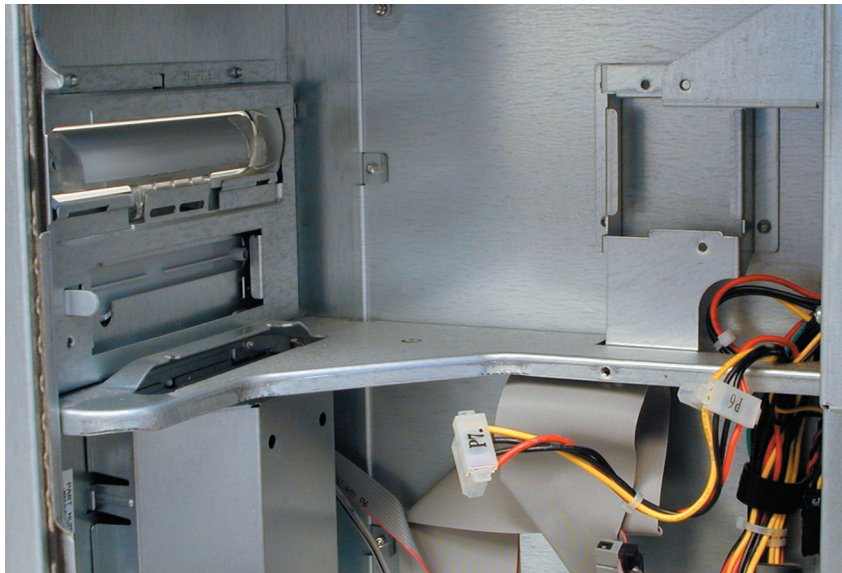
Press in with a screwdriver to unlock release tabs to slide the front drive door off of the drive tray.

For this step, you will need 2 tools, a paperclip, and a small straight blade screwdriver.

Start by straightening out the paperclip and inserting it into the emergency release hole on the front of the new optical drive's front bezel. The tray will pop out enough to get your fingernails on and slide the tray out partway as shown. Then, turn the drive over and locate the tabs that lock the front drive door onto the drive sled, circled here. You will need to insert the straight blade screwdriver into the guides where the tabs lock down, and release the tabs enough to slide the drive door upward (toward the table in this picture), removing it from the drive tray.

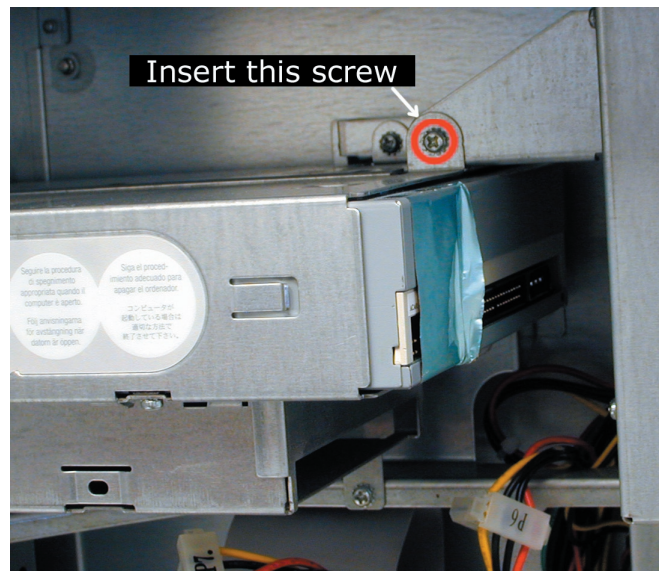
Why did you just do this? Because the drive door is too large to fit through the opening that the QuickSilver has for optical drives. If you look at the drive you removed, you will see that Apple shipped the drives that way also. Keep the front door in case you ever decide to remove the drive you just removed and want to put it in an external case or in another system.



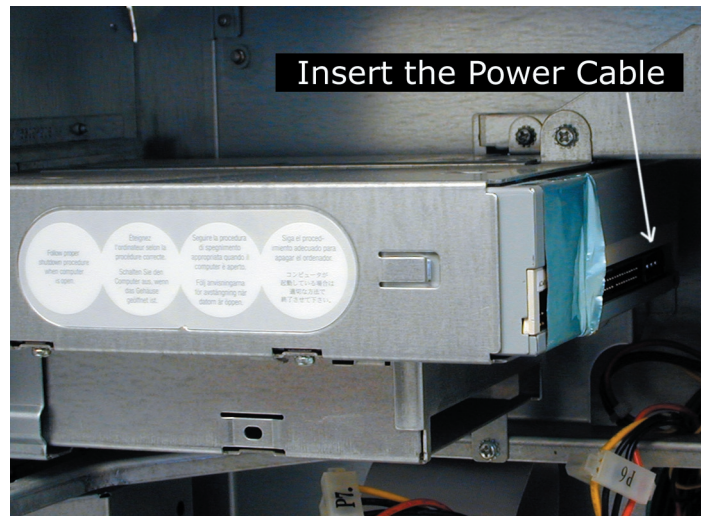


Once the two screws are removed, the CD drive bay will slide rearward and toward you, out of the computer.

---

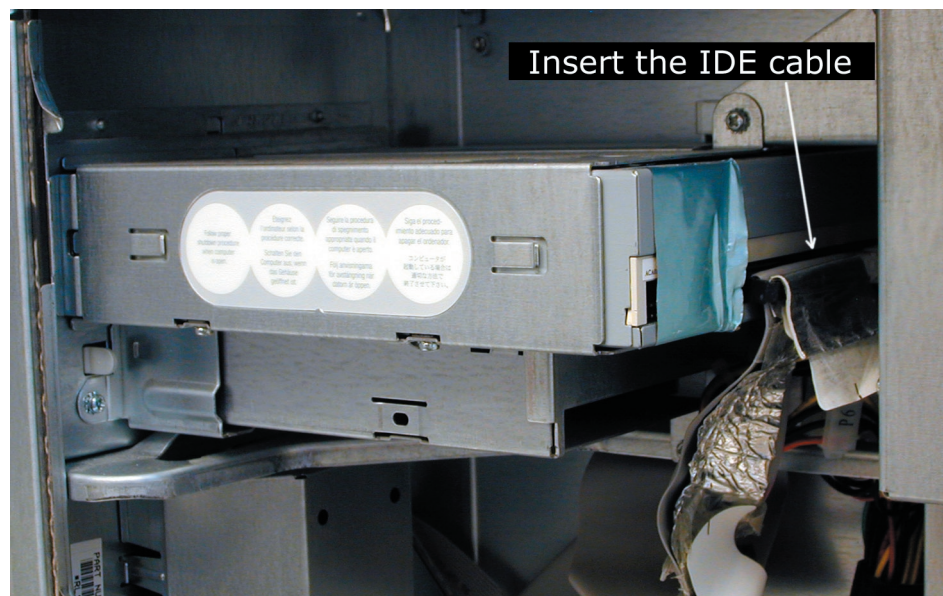


Insert the two Phillips screws you removed from the optical drive carrier.



Replace the power cable you removed from the back of the optical drive. If you have a ZIP drive installed, you will need to replace that power cable as well (not shown).

---



Replace the IDE cable you removed from the back of the optical drive. If you have a ZIP drive installed, you will need to replace that IDE cable as well (not shown).

**You're finished! Start up your computer and enjoy your new Optical drive from OWC! Thank you!**