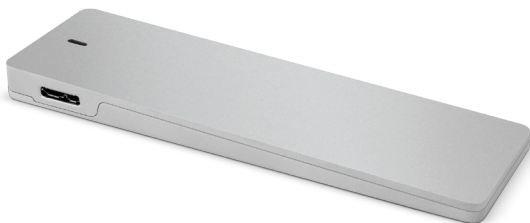




OWC Envoy<sup>®</sup>  
USER GUIDE



# TABLE OF CONTENTS

<b>1. INTRODUCTION .....</b>	<b>1</b>
1.1 MINIMUM SYSTEM REQUIREMENTS	
1.1.1 Apple® Mac® Requirements	
1.1.2 PC Requirements	
1.2 PACKAGE CONTENTS	
1.3 ABOUT THIS MANUAL	
1.4 PORT VIEW	
1.4.1 Connectivity Features	
1.5 LED INDICATOR	
<b>2. SYSTEM SETUP .....</b>	<b>3</b>
2.1 ASSEMBLY	
<b>3. APPENDIX .....</b>	<b>5</b>
3.1 FORMATTING	
3.2 TROUBLESHOOTING	
3.3 ABOUT DATA BACKUP	
3.4 ONLINE RESOURCES	
3.5 TECHNICAL SUPPORT HOURS AND CONTACT INFORMATION	

# INTRODUCTION

## 1.1 MINIMUM SYSTEM REQUIREMENTS

### 1.1.1 Apple® Mac® Requirements

- PowerPC G4 CPU, 128MB RAM
- USB port: OS X® 10.2 or later

### 1.1.2 PC Requirements

- 500MHz Intel® Pentium® 3 CPU, 128MB RAM
- USB port: Windows® XP or later

## 1.2 PACKAGE CONTENTS



1. USB 3.0 (Standard-A to Micro-B) cable
2. OWC Envoy
3. Adhesive rubber feet
4. Storage bag

## 1.3 ABOUT THIS MANUAL

Firmware, images, and descriptions may vary slightly between this manual and the unit shipped. Functions and features may change depending on the firmware version. Please visit the product webpage for the most recent product specifications.

## 1.4 PORT VIEW



### 1.4.1 Connectivity Features

**1. USB 3.0 port** — Attach the included USB 3.0 (Standard-A to Micro-B) cable here.

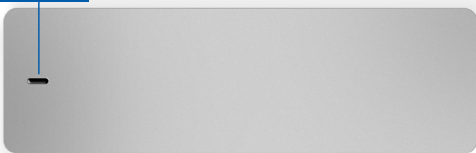
#### NOTE:

- The OWC Envoy is designed to receive all needed power through the USB cable, therefore a separate power adapter is not necessary.
- For the safe removal of your drive and to assure that no data is lost, always eject or unmount the drive from your operating system before powering off.

## 1.5 LED INDICATOR

The OWC Envoy has an LED indicator on the top, as shown in the picture below. The LED emits a solid blue light when the unit is powered on and flashes during drive activity.

#### LED indicator



# SYSTEM SETUP



*These are static-sensitive devices. They are susceptible to invisible damage if not protected during installation.*

*We recommend proper grounding by using a grounding strap. Make sure to work in a clean and static-free area, and avoid wearing clothing that retains static charges.*

*For more information, please visit: <http://www.macsales.com/static>*

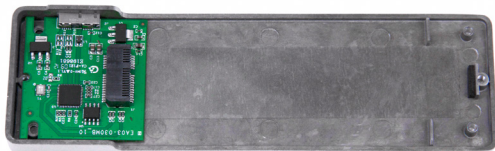
## 2.1 ASSEMBLY

**NOTE:** The OWC Envoy is only compatible with the original Apple SSD from a MacBook Air® 2010 or MacBook Air 2011. Any other third-party SSD, **including the OWC Aura Pro SSD**, is NOT compatible. Other models of MacBook Air use different SSDs and are NOT compatible with the OWC Envoy.

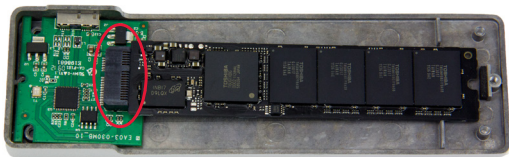
1. Use a Torx T5 screwdriver to remove the two screws on the bottom of the OWC Envoy, as circled in the picture below. The screw on the left is longer than the screw on the right. Be careful not to use too much force when removing these screws, as it is possible to strip them if you are not careful.



2. Lift off the bottom cover to reveal the green circuit board, as shown in the picture below. The circuit board will be slightly loose in the enclosure, as it is held in place by pegs in the bottom cover when the OWC Envoy is assembled.



3. Insert your SSD into the black SATA connector on the circuit board, as circled in the picture below. The connector is notched so that it only fits in one orientation.



4. Replace the bottom cover, then use a Torx T5 screwdriver to install the two screws that you removed in step 1, as circled in the picture below. The longer screw goes on the left and the shorter screw goes on the right. Remember to be careful when installing the screws and do not use too much force. If the screws are over-tightened, they could strip.



5. Remove the backing on each of the adhesive rubber feet and place the sticky side of each foot in one of the grooves on either end of the OWC Envoy, as shown.



The assembly process is now complete. You can begin using your OWC Envoy right away. If you need to format the SSD inside the OWC Envoy, see **Section 3.1**.

# APPENDIX

## 3.1 FORMATTING

For formatting information, including instructions on how to format your OWC Envoy for Mac or Windows, go to: <http://www.macsales.com/format>

## 3.2 TROUBLESHOOTING

Begin your troubleshooting by verifying that both ends of your cables are properly plugged into the computer and the OWC Envoy. If the OWC Envoy is still not working properly, try a different USB cable. You can also connect it to a different USB port or a different computer.

If problems persist, consult our online collection of frequently asked questions (<http://www.macsales.com/FAQ>) or see **Section 3.5** for information on contacting OWC technical support.

## 3.3 ABOUT DATA BACKUP

To ensure that your files are protected and to prevent data loss, we strongly suggest that you keep two copies of your data: one copy on your OWC Envoy and a second copy on either your internal drive or another storage medium, such as an optical backup, or on another external storage unit. Any data loss or corruption while using the OWC Envoy is the sole responsibility of the user, and under no circumstances will Other World Computing be held liable for compensation or the recovery of any lost data.

## 3.4 ONLINE RESOURCES

### Data Migration:

For a step-by-step walkthrough of our recommended method for migrating your data from an old drive to a new one, go to:

<http://www.macsales.com/migration>

### FAQs:

Access our online collection of frequently asked questions for this and other products at: <http://www.macsales.com/FAQ>

## 3.5 TECHNICAL SUPPORT HOURS AND CONTACT INFORMATION

8AM - 8PM (CT) Monday - Friday

9AM - 4PM (CT) Saturday

### Telephone:

(800) 275-4576 (North America)

(815) 338-8685 (International)

### Live Chat:

[www.macsales.com/livechat](http://www.macsales.com/livechat)

### Email:

[www.macsales.com/ts\\_email](http://www.macsales.com/ts_email)

### Changes:

The material in this document is for information only and subject to change without notice. While reasonable efforts have been made in the preparation of this document to assure its accuracy, Other World Computing assumes no liability resulting from errors or omissions in this document, or from the use of the information contained herein. Other World Computing reserves the right to make changes or revisions in the product design or the product manual without reservation and without obligation to notify any person of such revisions and changes.

### FCC Statement:

#### **Warning! Modifications not authorized by the manufacturer may void the user's authority to operate this device.**

NOTE: This equipment has been tested and found to comply with the limits for a Class A digital device, pursuant to Part 15 of the FCC Rules. These limits are designed to provide reasonable protection against harmful interference when the equipment is operated in a commercial environment. This equipment generates, uses, and can radiate radio frequency energy and, if not installed and used in accordance with the instruction manual, may cause harmful interference with radio communications. Operation of this equipment in a residential area is likely to cause harmful interference, in which case the user will be required to correct the interference at his own expense.

NOTE: This equipment has been tested and found to comply with the limits for a Class B digital device, pursuant to Part 15 of the FCC Rules. These limits are designed to provide reasonable protection against harmful interference in a residential installation. This equipment generates, uses and can radiate radio frequency energy and, if not installed and used in accordance with the instructions, may cause harmful interference to radio communications. However, there is no guarantee that interference will not occur in a particular installation. If this equipment does cause harmful interference with radio or television reception, which can be determined by turning the equipment off and on, the user is encouraged to try to correct the interference by one or more of the following measures:

- Reorient or relocate the receiving antenna.
- Increase the separation between the equipment and receiver.
- Connect the equipment to an outlet on a circuit different from that to which the receiver is connected.

### Health And Safety Precautions:

- Read this user guide carefully and follow the correct procedures when setting up the device.
- Do not attempt to disassemble or modify the device. To avoid any risk of electrical shock, fire, short-circuiting or dangerous emissions, never insert any metallic object into the device. If it appears to be malfunctioning, contact Other World Computing technical support.
- Never expose your device to rain, or use it near water or in damp or wet conditions. Never place objects containing liquids on the drive, as they may spill into its openings. Doing so increases the risk of electrical shock, short-circuiting, fire or personal injury.

### General Use Precautions:

- To avoid damage, do not expose the device to temperatures outside the range of 5° C to 40° C (41° F to 104° F).
- Always unplug the device from the electrical outlet if there is a risk of lightning or if it will be unused for an extended period of time. Otherwise, there is an increased risk of electrical shock, short-circuiting or fire.
- Do not use the device near other electrical appliances such as televisions, radios or speakers. Doing so may cause interference which will adversely affect the operation of the other products.
- Do not place the device near sources of magnetic interference, such as computer displays, televisions or speakers. Magnetic interference can affect the operation and stability of hard drives.
- Do not place heavy objects on top of the device.
- Protect your device from excessive exposure to dust during use or storage. Dust can build up inside the device, increasing the risk of damage or malfunction.
- Do not block any ventilation openings on the device. These help to keep the device cool during operation. Blocking the ventilation openings may cause damage to the device and cause an increased risk of short-circuiting or fire.
- For up-to-date product and warranty information, please visit the product webpage.

### Copyrights and Trademarks:

© 2014 Other World Computing. All rights reserved. No part of this publication may be reproduced, stored in a retrieval system, or transmitted in any form or by any means, electronic, mechanical, photocopying, recording or otherwise, without the prior written consent of Other World Computing. OWC is a trademark of New Concepts Development Corporation, registered in the U.S. Patent and Trademark Office and in Canada. OWC Envoy, Mercury Aura, the OWC logo and the Other World Computing logo are trademarks of New Concepts Development Corporation. Apple, Mac, MacBook Air, and OS X are trademarks of Apple Inc., registered in the U.S. and other countries. Intel and Pentium are trademarks of Intel Corporation in the U.S. and/or other countries. Windows is a registered trademark of Microsoft Corporation in the U.S. and other countries. Other marks may be the trademark or registered trademark property of their owners.

R3 04/30/14 SL



OWCMANENVOGAM

Copyright ©2014 Other World Computing, all rights reserved. Other World Computing's Limited Warranty is not transferable and is subject to limitations.