

Thank you for purchasing your new Other World Computing Mercury Elite Pro single bay hard drive enclosure. Follow these steps to install your hard drive mechanism.



On the bottom of the OWC Mercury Elite-AL enclosure you will find 2 Phillips screws. Remove those two screws and the drive compartment will slide out towards the front of the enclosure. Remove the outer shell to proceed with drive installation.



Unpack your new OWC Mercury Elite AL-Pro enclosure. Depending on the model purchased, you will have different interface cables.

Shown above is the contents of the 'Quad Interface' model.

All OWC Mercury Elite-AL Pro enclosures include an interface cable for each of the different ports the enclosure supports.



Here you see the OWC Mercury Elite-AL internal drive tray compartment. Insert your SATA 3.5" hard drive in the bay, and fully seat the drive connector onto the bridge board. The bridge board is the green circuit board pictured to the left in this photograph. You will see there is a connector built onto the bridge board that will interface with the drive, providing power and signal connections - no cables to connect!



Here you see the hard drive fully inserted into the enclosure. Once you have inserted the drive, proceed to the next step, attaching the hard drive into the drive bay.



Make sure you have the outer enclosure shell oriented properly, with the holes in the bottom of the shell facing you.

Slide the internal drive tray back onto the outer drive enclosure shell, from the front to the back this time. Once you have the drive tray fully inserted, replace the 2 Phillips screws you removed at the beginning to secure the outer shell to the inner drive tray.



On the sides of the hard drive bay you will see 2 black rubber mounting grommets. You should see the holes in the side of your hard drive through these black rubber grommets, insert the provided screws through the rubber grommets to secure the hard drive inside the drive bay. These rubber grommets will help dampen noise and vibration, and also shock protect the drive. Repeat on the other side of the drive enclosure.



Now that you have your hard drive assembled, take a few moments and look at the back of the OWC Mercury Elite-AL Pro drive enclosure. Depending on the model purchased, you will see there are a multitude of interfaces that the drive enclosure supports. From the basic FireWire 400 / USB 2.0 enclosure, to the 'Quad Interface' model pictured here, the OWC Mercury Elite-AL Pro supports most any computer.

System Setup:

Your new OWC Mercury Elite-AL Pro drive is simple to hook up to your computer. Simply choose whichever interface you prefer to use with your computer. OWC recommends you use the highest speed interface your computer has for optimum performance.

Highest performance will be gained by using the below listed interfaces, in order of preference:

1. eSATA
2. FireWire 800 (1394b)
3. FireWire 400 (1394a)
4. USB 2.0

Note we rank USB 2.0 lowest on the list. In raw bandwidth, USB 2.0 offers higher speeds than FireWire 400, but in real-world testing, FireWire 400 is the faster choice.

You cannot hook more than one type of interface up at a time to your computer. Attempt to do so can damage your computer, and the OWC Mercury Elite-AL enclosure.

Here are a few tips to get the most out of your new external storage device:

- Do not place anything in front of your OWC Mercury Elite-AL Pro enclosure. The holes on the front of the enclosure are for airflow - don't block them.
- Treat your OWC Mercury Elite-AL Pro like you treat your computer. Keep it dry, cool, and out of direct sunlight.
- Always check any peripheral cable that you are going to connect to your OWC Mercury Elite-AL Pro enclosure for damage to it's plug before inserting them into the enclosure. Damaged or bent connector pins are a common cause for problems.

Troubleshooting:

Technical support for your new OWC Mercury Elite-AL Pro enclosure is just a click away whenever you need it!

http://eshop.macsales.com/tech_center/index.cfm

Visit our tech center for answers to your questions, in either our library of support information, or our searchable FAQ section.

<http://helpcenter.macsales.com/>

Perfer to talk to a human being? OWC offers a multitude of support options, from phone support to interactive live chat, available every day of the week.

<http://eshop.macsales.com/Service/index.cfm>

©Copyright 2008 Other World Computing All Rights Reserved

The information contained within is believed to be accurate and reliable. Other World Computing assumes no responsibility for any errors contained within, Other World Computing reserves the right to make changes in the specifications and/or design of this product without prior notice. The photographs contained within may differ from the product that you receive and are there for illustration purposes only. Other World Computing assumes no responsibility for any differences between the product mentioned in this manual and the product that you may receive.

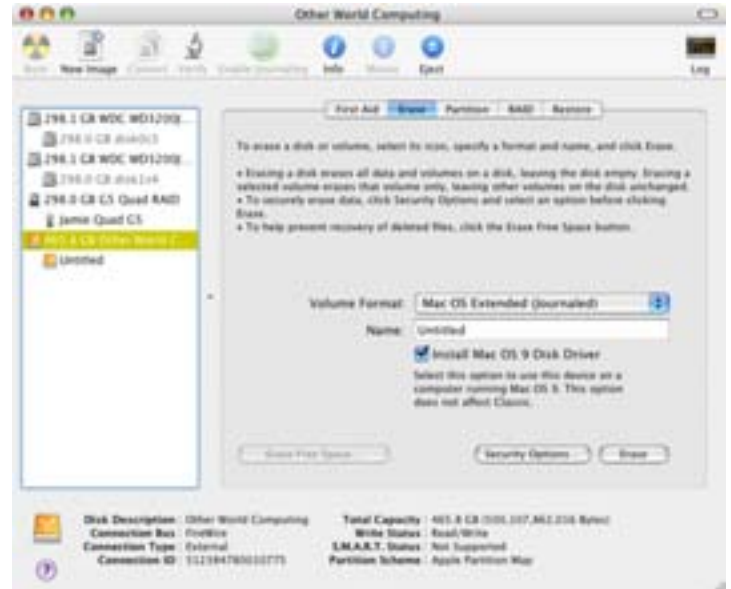
Revision 1 September 22 2008

Formatting for use in Mac OS X:

Upon initial startup of your new OWC Mercury Elite-AL Pro external drive, you will be greeted with the following dialog box:



Click on the Initialize... button to open Apple Disk Utility to proceed with initializing the new hard drive.



Click on the new hard drive icon with no volumes attached to it and click erase to proceed with initialization of the new hard drive mechanism. For more detailed instructions, visit:

http://eshop.macsales.com/tech_center/formatting.cfm

Formatting for use with other operating systems:

Not using Mac OS X? Don't worry, we're able to walk you through setup for any type of operating system with step-by-step instructions here:

http://eshop.macsales.com/tech_center/formatting.cfm

Thank you from Other World Computing!

OWC

OWC Mercury Elite-AL Pro Single Bay Enclosure

*External Storage Enclosure for
3.5" Serial ATA Hard Drives (SATA)*



Owner's Manual Assembly Guide