

# Owner's Manual Assembly Guide



## OWC Mercury Elite Pro "Classic" External Storage Enclosure for 3.5" Serial ATA Hard Drives (SATA)

Thank you for purchasing your new OWC Mercury Elite Pro hard drive enclosure. Follow these steps to install your hard drive mechanism.



Unpack your new OWC Mercury Elite Pro enclosure. Depending on the model purchased, you will have different interface cables.

Shown above is the contents of the 'Quad Interface' model. The FireWire / USB only model will include feet, power cord, power supply, FireWire 400 cable, and USB 2.0 cable.

All OWC Mercury Elite Pro enclosures include an interface cable for each of the different ports the enclosure supports.

Extra accessories are available on our website, if you plan on using your new enclosure at work and home, you may want to purchase a second

The information contained within is believed to be accurate and reliable. Other World Computing assumes no responsibility for any errors contained within, and/or design of this product without prior notice. The photographs contained within may differ from the product that you receive and are there for illustration purposes only. Other World Computing assumes no responsibility for any differences between the product mentioned in this manual and the product that you may receive.

©Copyright 2009 Other World Computing All Rights Reserved

<http://eshop.macsales.com/Service/index.cfm>

Prefer to talk to a human being? OWC offers a multitude of support options, from phone support to interactive live chat, available every day of the week.

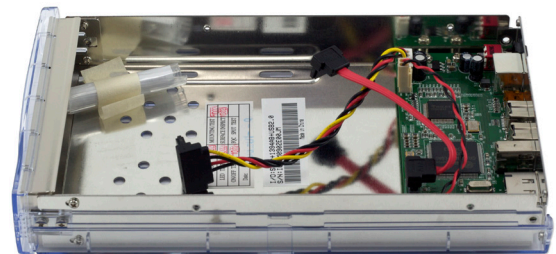
<http://helpcenter.macsales.com/>

Visit our tech center for answers to your questions, in either our library of support information, or our searchable FAQ section.

[http://eshop.macsales.com/tech\\_center/index.cfm](http://eshop.macsales.com/tech_center/index.cfm)

Technical support for your new OWC Mercury Elite Pro enclosure is just a click away whenever you need it!

### Troubleshooting:



Remove the top cover from your OWC Mercury Elite Pro enclosure by sliding the top cover towards the rear of the unit. Then, remove the single Phillips screw securing the top metal shield, and lift up on it to remove, exposing the inside of the enclosure.

Remove the taped down packet of screws.



Insert the power and SATA cables into the back of the hard drive and place the drive mechanism into the enclosure.



Turn the enclosure on it's side, removing the bottom plastic outer shell, and securing the drive you just placed into the enclosure with your fingers as shown above. Lift up on the hard drive mechanism and line the screwholes up with the cutouts on the bottom of the enclosure.

Remove the 4 large Phillips screws from the plastic bag and insert them through the bottom of the enclosure, firmly tightening into the new hard drive mechanism.

## System Setup:

Your new OWC Mercury Elite Pro drive is simple to hook up to your computer. Simply choose whichever interface you prefer to use with your computer. OWC recommends you use the highest speed interface your computer has for optimum performance.

Highest performance will be gained by using the below listed interfaces, in order of preference:

1. eSATA
2. FireWire 800 (1394b)
3. FireWire 400 (1394a)
4. USB 2.0

Note we rank USB 2.0 lowest on the list. In raw bandwidth, USB 2.0 offers higher speeds than FireWire 400, but in real-world testing, FireWire 400 is the faster choice.

You cannot hook more than one type of interface up at a time to your computer. Attempt to do so can damage your computer, and the OWC Mercury Elite Pro enclosure.

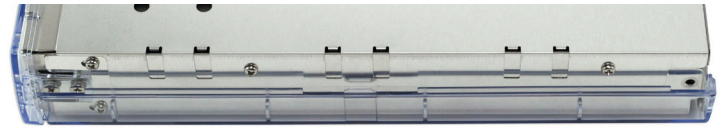
### Here are a few tips to get the most out of your new external storage device:

- Treat your OWC Mercury Elite Pro like you treat your computer. Keep it dry, cool, and out of direct sunlight.
- Always check any peripheral cable that you are going to connect to your OWC Mercury Elite Pro enclosure for damage to it's plug before inserting them into the enclosure. Damaged or bent connector pins are a common cause for problems.



Lay the power and SATA wires flat inside the case, then place the metal shield back on top of the enclosure.

Secure the metal shield with the 3 short Phillips screws that were inside the clear plastic bag and the one screw you removed to initially remove the metal cover - it takes 2 per side to assemble.



Now that you have your hard drive assembled, take a few moments and look at the back of the OWC Mercury Elite Pro drive enclosure.

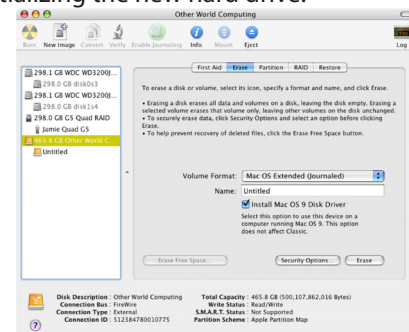
Depending on the model purchased, you will see there are a multitude of interfaces that the drive enclosure supports. From the basic FireWire 400 / USB 2.0 enclosure, to the 'Quad Interface' model pictured here, the OWC Mercury Elite Pro supports most any computer.

## Formatting for use in Mac OS X:

Upon initial startup of your new OWC Mercury Elite Pro external drive, you will be greeted with the following dialog box:



Click on the Initialize... button to open Apple Disk Utility to proceed with initializing the new hard drive.



Click on the new hard drive icon with no volumes attached to it and click erase to proceed with initialization of the new hard drive mechanism. For more detailed instructions, visit:

[http://eshop.macsales.com/tech\\_center/formatting.cfm](http://eshop.macsales.com/tech_center/formatting.cfm)

## Formatting for use with other operating systems

Not using Mac OS X? Don't worry, we're able to walk you through setup for any type of operating system with step-by-step instructions here:

[http://eshop.macsales.com/tech\\_center/formatting.cfm](http://eshop.macsales.com/tech_center/formatting.cfm)

**Thank you from Other World Computing!**