



MULTI-MOUNT

Assembly Manual



Introduction

1.1 Hardware Requirements.....	1
1.1.1 Compatible Systems	
1.1.2 Supported Drives	
1.1.3 Required Tools	
1.2 Package Contents.....	1
1.3 About This Manual	1

Bracket Assembly

2.1 Installing 3.5 Inch SATA Drives.....	2
2.2 Installing 2.5 Inch SATA Drives.....	3
2.3 Installing Two 2.5 Inch SATA drives.....	3
2.4 Combining 2.5 and 3.5 Inch Drives.....	3

Computer Installation

3.1 Apple Mac Pro Installation	4
3.2 PC Installation	4

Support Resources

4.1 Formatting	5
4.2 Troubleshooting.....	5
4.3 About Data Backup	5
4.4 Contacting Technical Support.....	5

INTRODUCTION

1.1 Hardware Requirements

1.1.1 Compatible Systems

- Apple Mac or PC with available 5.25 inch optical bay or 3.5 inch hard drive bay

1.1.2 Supported Drives

- Any 3.5 inch or 2.5 inch SATA drive, or 3.5 inch IDE drive

1.1.3 Required Tools

- Phillips PH1 or PH2 screwdriver *

* There may be additional tools required; please check the computer's manual.

1.2 Package Contents

1. OWC Multi-Mount 3.5" drive bracket (2 pieces)
2. OWC Multi-Mount 2.5" drive bracket (2 pieces)
3. Coarse-threaded screws for 2.5" brackets and 3.5" drives (12 pieces)
4. Fine-threaded screws for 5.25" PC bays (4 pieces) - not shown



1.3 About This Manual

The OWC Multi-Mount brackets are sold both individually and as sets. This manual details both types of brackets. For this reason, the item you purchased may not include all of the items shown in this manual (or the same quantity of items). In addition, the images included in this manual may vary slightly in appearance from the items you received. Please visit the product web page for the most recent product information. OWC's Limited Warranty is not transferable and subject to limitations.




General Precautions



- Read this manual carefully and follow the recommended steps for assembly. Please contact Technical Support (see Section 4.4) if you have questions.
- Your computer is a static-sensitive device; it is susceptible to invisible damage if not protected during installation. Use proper anti-static precautions while installing the Multi-Mount. Failure to do so can cause damage to the drives and/or the computer.
- Be sure to work in a clean and static-free area, and avoid wearing clothing that retains static charges. For more details, visit: www.owcdigital.com/support/anti-static

2.1 Installing 3.5 Inch SATA Drives

1. Position the bottom 3.5 inch drive so that the SATA and power ports face to the right, then position the drive bracket labeled 'Multi-Mount 3.5"' as shown at right.
 
2. Attach the drive to the Multi-Mount using the center screw hole (shown in yellow) and one of the included, coarse-thread drive mounting screws; do not fully tighten it.
3. Attach a second screw to the left-most or right-most screw hole (shown in red) in order to center the bracket on the drive. Afterward you can insert the remaining screw, then fully tighten all three screws. If you intend to install a second 3.5 inch drive, follow Steps 1-3 again, except that you will use the corresponding screw holes along the top of the bracket.
4. Once you have the first bracket installed, rotate the drive and the attached bracket, then affix the opposing bracket using the method described in steps 1-3. Once the second bracket is affixed, the 3.5 inch Multi-Mount assembly is ready to be installed into your system. **Section 3** briefly describes common installation scenarios.

Note

You do not have to install two drives into the bracket; a second drive can be added at a later time. For 3.5 inch drives, the process described above works for both SATA and IDE drives.

2.2 Installing a 2.5 Inch SATA Drive

1. To install a 2.5 inch SATA drive into the Multi-Mount, place the drive in front of you, with the SATA and power ports facing to the right (as shown at right). Position the two drive brackets as shown.

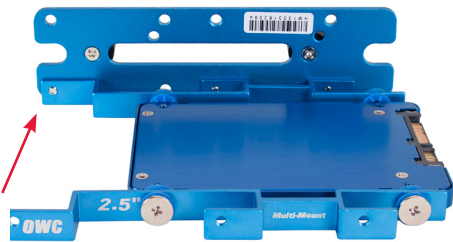


2. Use the large Phillips screws (pre-attached) to affix the drive to the front bracket (highlighted in red). Each screw hole also has a grommet that is pre-attached to the bracket. The grommets are used for vibration reduction; do not remove them.

3. Rotate the drive and brackets then affix the the rear bracket using the large Phillips screws. Make sure all four screws are tightened. The 2.5 inch Multi-Mount assembly is now ready to be installed into a 3.5 inch drive bay or the 3.5 inch brackets.

2.3 Installing Two 2.5 Inch SATA Drives

You can install two 2.5 inch SATA drives onto the 3.5 inch drive brackets. Note the orientation of the two types of brackets, shown below-left. The same screw holes are used to affixed 2.5 inch drive assemblies and 3.5 inch drives (see Section 2.1).



2.4 Combining 2.5 and 3.5 Inch Drives

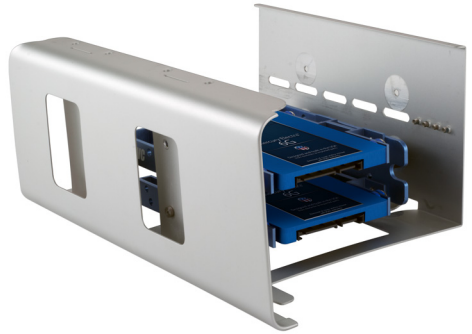
The image at right shows a hybrid configuration that includes a 2.5 inch and a 3.5 inch SATA drive. When installing the 2.5 inch drive assembly into the 3.5 inch brackets, be sure to orient the assembly so that the ports on both drives are facing the same direction, as shown at right.



3.1 Apple Mac Pro Installation

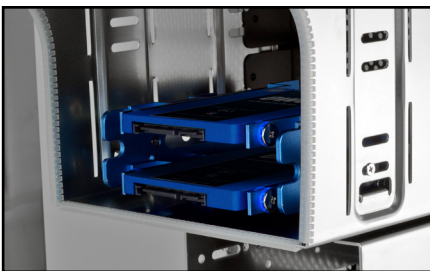
The Mac Pro's optical bay can support a total of two SATA devices.

1. Attach the completed Multi-Mount assembly to the optical drive cage using the four screws that Apple supplies (shown at right). The screws should be attached to the cage.
2. Once the Multi-Mount is secured, carefully slide the cage back into the optical bay, threading the large cutouts on the bottom of the cage with the large screws on the bottom of the bay.
3. When the cage is about half way in, connect the SATA devices' cables, then slide the cage the rest of the way until it is fully seated. **Do not bend or pinch the cables.**



3.2 PC Installation

A typical PC case is shown below with the 2.5 inch Multi-Mount brackets installed in both a 5.25 inch drive bay (left), and a 3.5 inch drive bay (right). Depending on the computer case being used, the methods of installation will vary. Remember to properly orient the brackets and use the included screw kits to fasten the Multi-Mount into the chassis.



Note

When installing the 3.5" brackets into a 5.25" PC bay (above-left), use the fine-threaded screws to affix the brackets to the case. When installing the 2.5" brackets into a 3.5" PC bay (above-right), use the coarse-threaded screws to affix the brackets to the case.

SUPPORT RESOURCES

4.1 Formatting

For tips on how to format the drive(s) installed with your Multi-Mount, please visit: www.owcdigital.com/format

4.2 Troubleshooting

If you are having trouble with the installation, go back and examine the steps and photographs. Most fit issues can be traced to missing a step or screw. Double-check the orientation of the brackets; make sure they are facing the correct direction. Each computer is different; if you do not have the correct bracket or enough brackets for your system, they are available individually. Please contact Technical Support for assistance with additional parts.

4.3 About Data Backup

To prevent data loss, we strongly suggest that you keep two copies of your data, each copy on a separate drive, ideally in separate locations. Any data loss or corruption while using the Multi-Mount is the sole responsibility of the user, and under no circumstances may OWC, its parents, partners, or affiliates be held liable for loss of the use of data including compensation of any kind or recovery of the data.

4.4 Contacting Technical Support



Phone: M–F, 8am–5pm CST
(866) 692-7100 (N. America) | +1 (815) 338-4751 (Int'l)



Chat: M–F, 8am–8pm CST
www.owcdigital.com/support



Email: Answered within 48 hours
www.owcdigital.com/support

Changes:

The material in this document is for information purposes only and subject to change without notice. While reasonable efforts have been made in the preparation of this document to assure its accuracy, OWC, its parent, affiliates, officers, employees, and agents assume no liability resulting from errors or omissions in this document, or from the use of the information contained herein. OWC reserves the right to make changes or revisions in the product design or the product manual without reservation and without obligation to notify any person of such revisions and changes.

Warranty:

The OWC Multi-Mount has a 1 year OWC Limited Warranty

Copyrights and Trademarks:

No part of this publication may be reproduced, stored in a retrieval system, or transmitted in any form or by any means, electronic, mechanical, photocopying, recording or otherwise, without the prior written consent of OWC.

© 2017 OWC. All rights reserved.

OWC and Multi-Mount are trademarks of New Concepts Development Corporation, registered in the U.S. Patent and Trademark Office and/or in Canada. The OWC logo is a trademark of New Concepts Development Corporation. Apple and Mac Pro are trademarks of Apple Inc., registered in the United States and/or other countries. Other marks may be the trademark or registered trademark property of their owners.

