



Apple® iPod® Replacement Battery

4th Generation



Please observe all static safe precautions while working inside your iPod. Newer Technology, Inc. takes no responsibility for damage occurring to your iPod while installing this replacement battery. If you are concerned or unable to follow this installation process, please contact a sales representative for a quote on our professional installation service.



Begin by placing your iPod on a soft work surface.



Insert the large opening tool into the side of the iPod's back shell as shown. The first thing you have to do is open a gap between the front face and the back shell. The easiest way to do this is to squeeze the iPod a bit, while pressing towards the side of the iPod you are trying to insert the tool into. It will take a few tries, don't get discouraged. You may find you have to hold the iPod in your hand to get enough force to insert the tool - if you do so, please be very careful, don't slip and cut your hand with the tool, or drop your iPod.



Once the tool is inserted, gently work it from the top edge to the bottom edge, releasing all of the clips on the left side. You may have to move the tool up and around the top edge to get that clip to release.



Work the tool around the bottom edge, and across the dock connector to the right side. Use extreme caution while sliding the tool across the dock connector, you can easily bend the metal around the dock connector as it is much thinner than the rest of the back shell. There are 2 clips, one on each side of the dock connector to release.



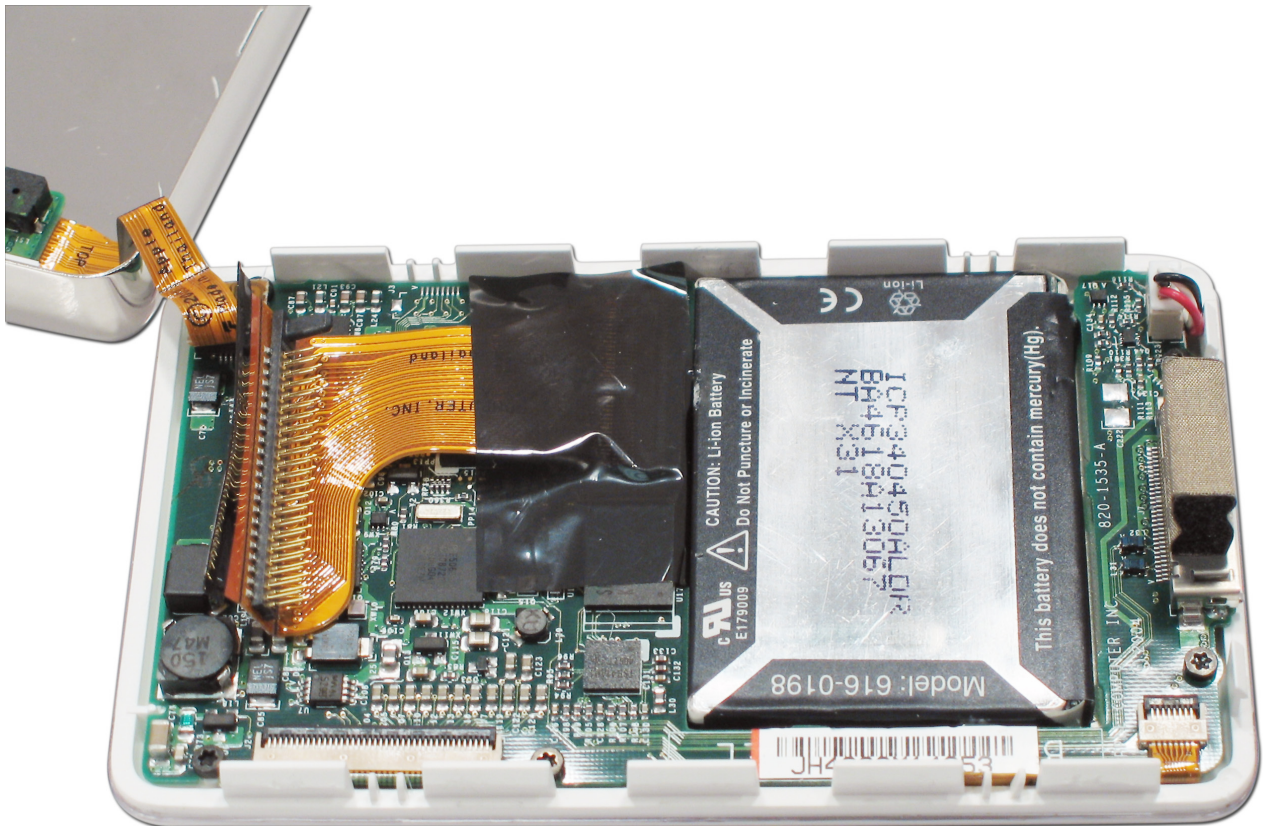
Finish releasing the back shell in the same manner as the left side, working the tool back and forth until the clips release. You once again may have to move the tool up and around to the top to get the shell to come off completely.



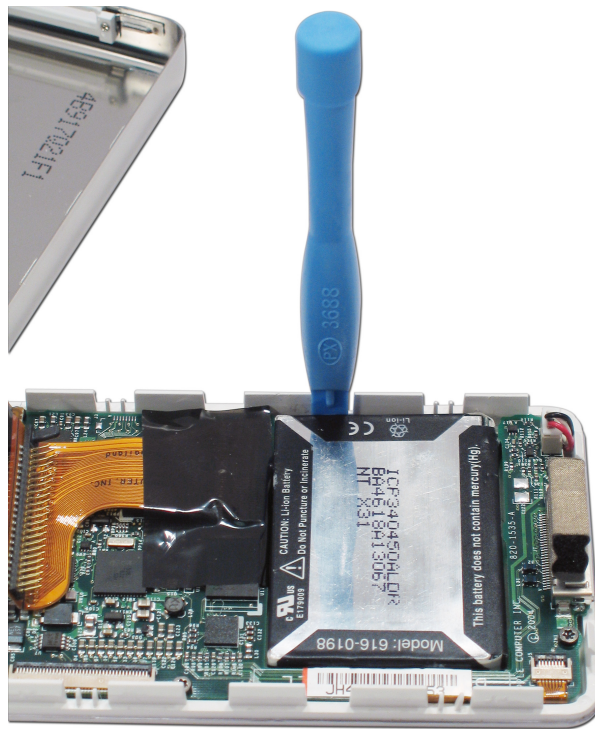
Once the back shell is released, place the iPod on its face and GENTLY lift the back shell off, lifting up and away from the Dock connector. Do NOT place too much pressure on the cable that connects the back of the iPod to the front of the unit. Set the back on the work surface as shown.



Lift up on the hard drive from the dock connector side about 1". On the opposite side, gently remove the connecting cable from the hard drive by pulling straight on the connector using the black portion of the ribbon cable, it's raised up above the drive a bit. Do not bend any pins on the hard drive while removing, use extreme caution. Once removed, place the hard drive aside.



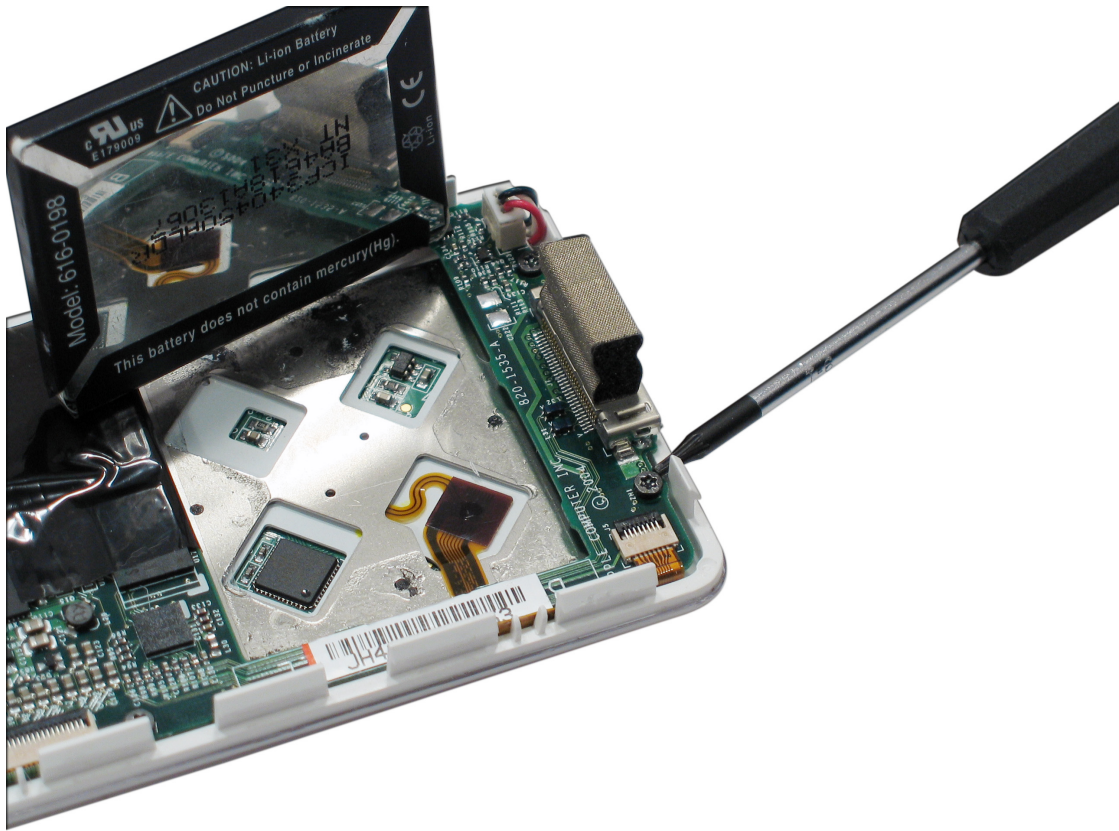
Once the hard drive is removed, you can see the battery that needs to be removed on the right of this picture.



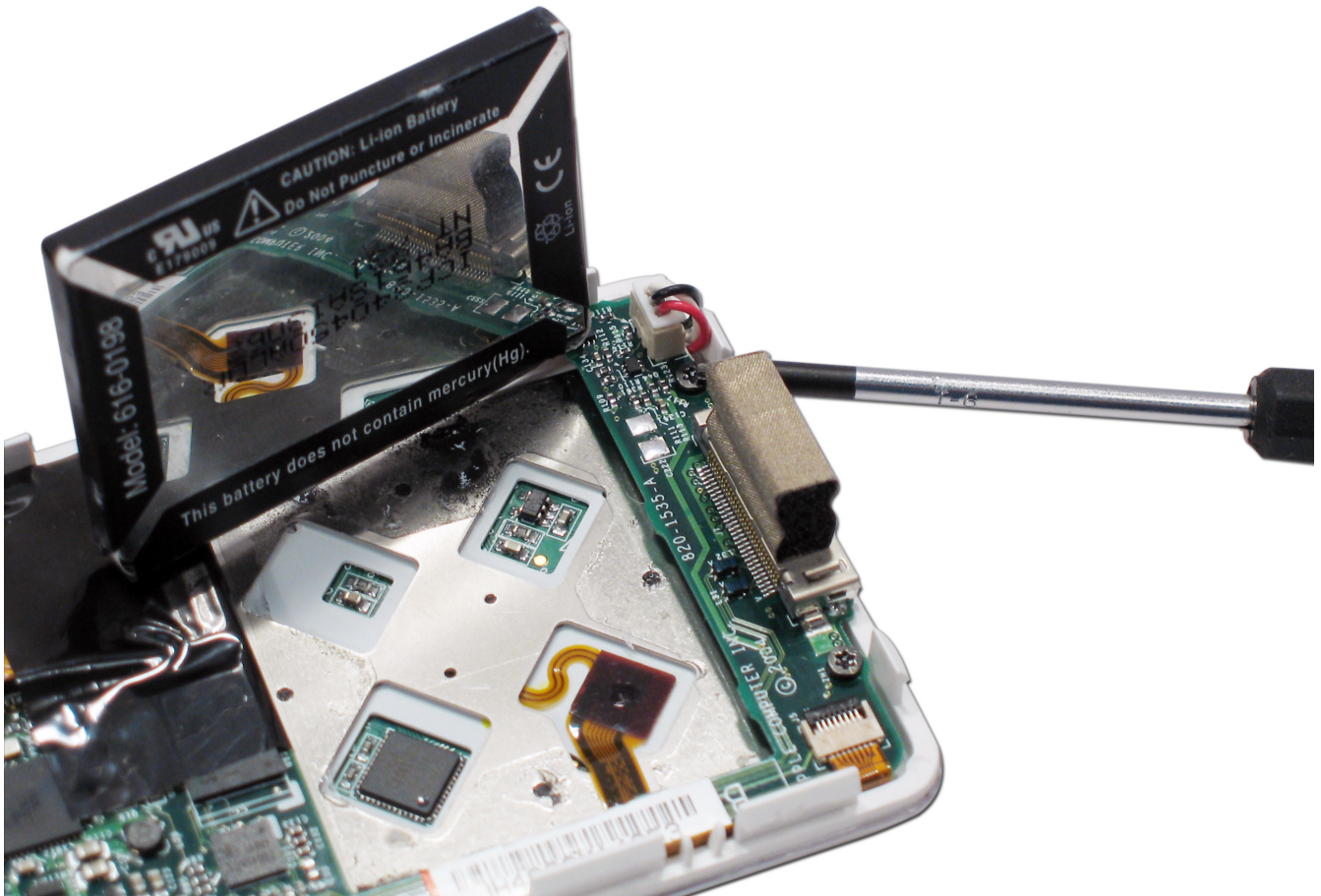
This is probably the most difficult portion of the battery replacement. The iPod battery is glued into the housing of the iPod. The next picture shows you where the glue is - all around the battery. Place the thin tool that came with the battery in between the groove shown, and gently, but firmly, pry upward on the battery. If you're lucky, the battery will come loose with a "snap". If you're not lucky, you may need to use a hair dryer to heat the battery up to get the glue to loosen its hold. Good luck!



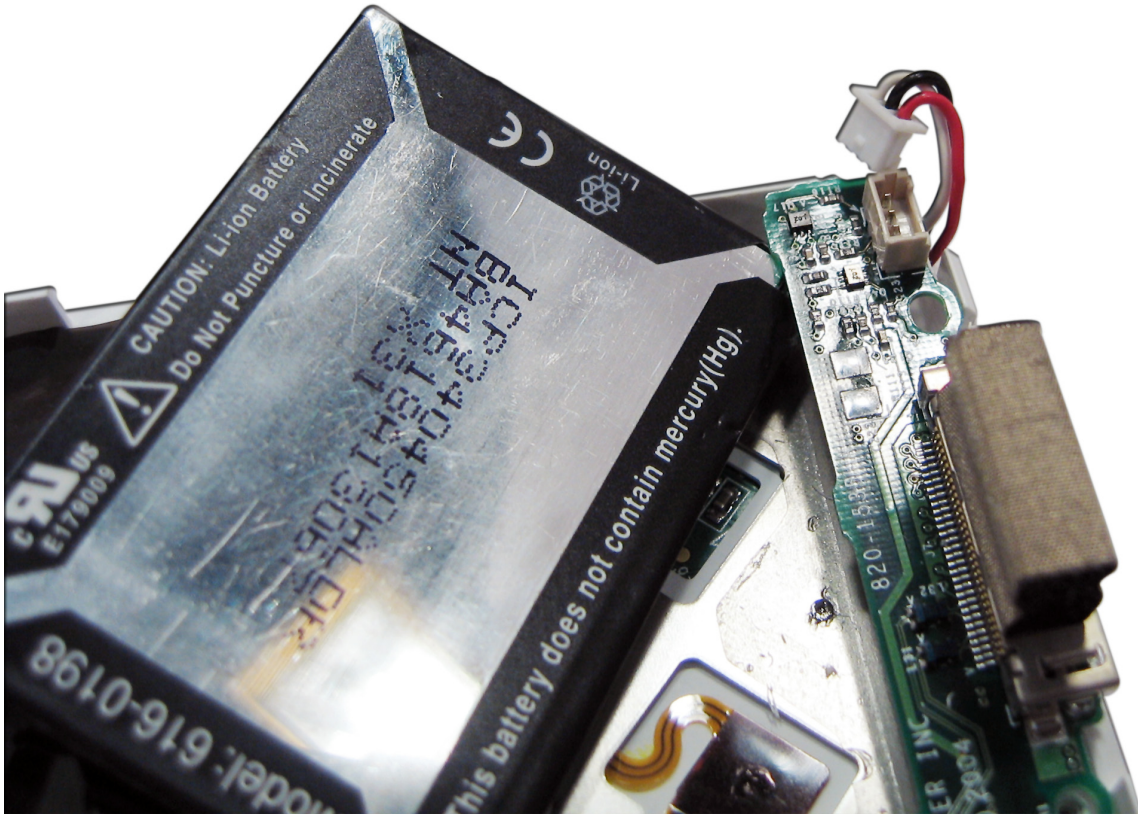
Here you can see the battery removed, and the "X" shaped pattern of adhesive under the battery.



Once the battery is loose, you need to remove 2 Torx T-6 screws to lift the logic board up enough to remove the battery wire and connector. Remove the first screw shown here.



Remove the 2nd screw from behind the dock connector in this picture.



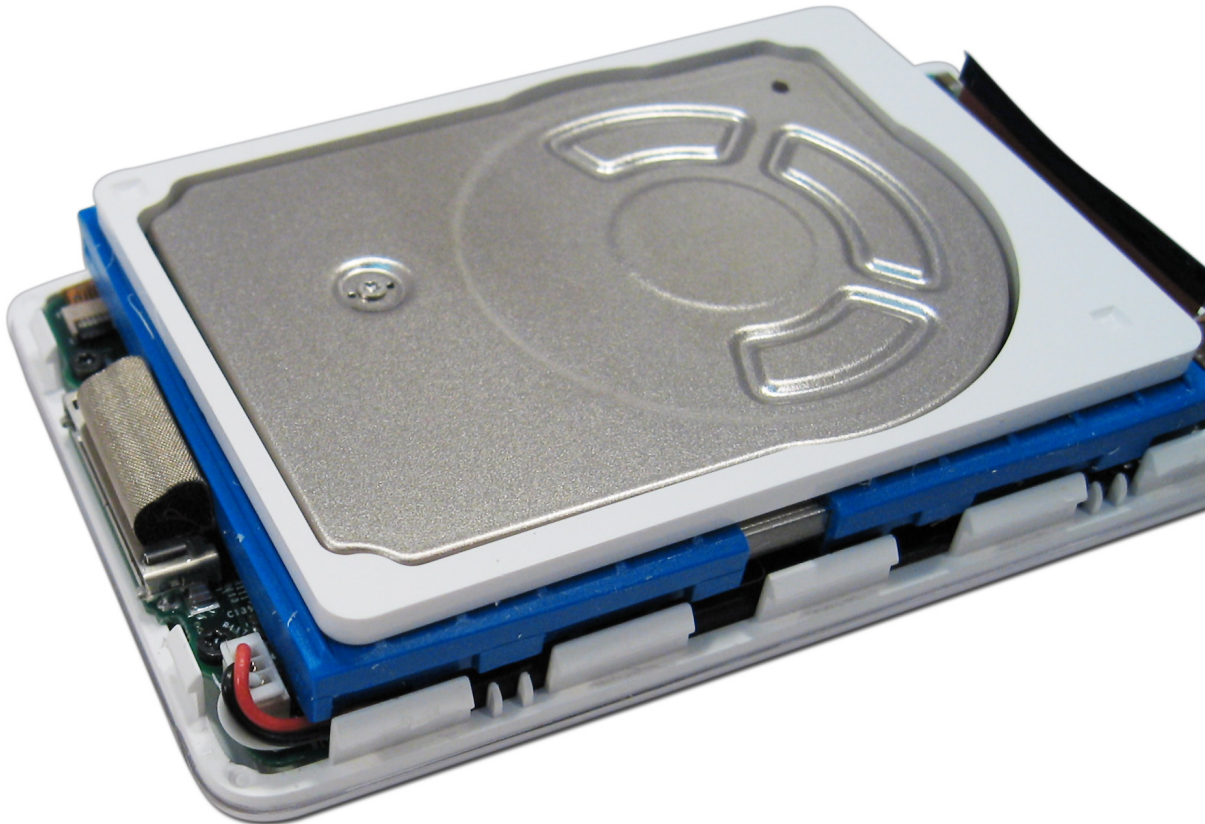
Once the logic board screws are removed, gently lift up on the edge of the logic board and remove the wire from underneath. Unplug the battery from the connector, supporting the logic board while doing so, it is fragile - be careful.



Take the replacement Newer Technology 4G High Capacity battery and make sure that the wire is oriented as shown - it's quite a snug fit. Firmly press the battery into the opening, from the left to the right (towards the dock connector), and towards the left (closest to you in this picture). This is important, as you don't want to put any strain on the logic board and if you were to press the battery straight down into the iPod, you would flex the logic board in 2 locations. Inserting the battery as described avoids this.



Insert the plug and route the wires as shown, over the top of the circuit board. Replace the 2 Torx screws that you removed previously.



Place the hard drive back on the iPod, and line the connectors up. There is a plastic guide pin that will make sure you get the drive installed properly. Fully seat the cable into the hard drive, and then place it back on top of the iPod. Note the proper location of the new battery cable.



Place the back of the iPod back onto the front. Work from one side to the other, pressing the face onto the back. Use equal pressure around the perimeter of the iPod to close the case fully. Look at the dock connector when done, and make sure that the static shield is fully tucked in and the dock connector is not blocked.



Be sure to visit Newer Technology's website for more battery and portable accessory products!



newer
technology_{inc}

Video Installation Guides for this iPod and other models available on the Newer Technology website:

<http://www.newertech.com/>

Your iPod is ready to go back into service. Be sure to charge the iPod overnight to get maximum life out of the battery. Thank you from all of us here at Newer Technology, Inc!

Entire contents copyright © 2005 Newer Technology, Inc All Rights Reserved JD 3/4/05

Apple and iPod are registered trademarks of Apple Computer, Inc.