



USB-C Travel Dock

User Guide



USB-C and Thunderbolt 3
Compatible



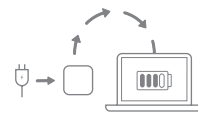
HDMI



SD Card Reader



USB Powered



Up to 100W
Power Pass-Through



Cable Storage

Introduction

- 1.1 Minimum System Requirements..... 1
 - Mac Requirements
 - PC Requirements
- 1.2 Package Contents..... 1
- 1.3 About This Manual..... 1
- 1.4 Dock Ejector 2
- 1.5 Enclosure Features 2

Device Setup

- 2.1 Usage Notes..... 3
- 2.2 Assembly Steps 3

Support Resources

- 3.1 Contacting Technical Support..... 4

1.1 Minimum System Requirements

Mac Requirements

- OS X 10.10 Yosemite or later
- macOS Sierra 10.12 or later

PC/Other Requirements

- Windows 10 or later
- iOS 12.1 or later, iPadOS
- Android
- Chrome OS
- Linux

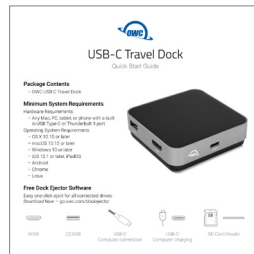
Hardware

- Any Mac, PC, tablet, or phone with a built in USB-C or Thunderbolt 3 port.

1.2 Package Contents



OWC USB-C Travel Dock



Quick Start Guide

IMPORTANT NOTE:

- Mac: To enable support for the Apple Super Drive, Apple USB Keyboard, and charging for iPad 1/2/3 generation devices on the dock's USB ports, please install the Dock Ejector application for Mac. This application includes a driver that enables support for these devices and charging functions. go.owcdigital.com/dockejector

1.3 About This Manual

The images and descriptions may vary slightly between this manual and the unit shipped. Functions and features may change depending on the firmware version. The latest product details and warranty information can be found on the product web page. OWC's Limited Warranty is not transferable and subject to limitations.

1.4 OWC Dock Ejector

This application safely ejects all drives connected to the USB-C Travel Dock with a single click, adding peace of mind to fast-paced mobile workflows. To install this app, please follow the steps below.

1. Download the installer file: For Mac download.owcdigital.com/dockejector/mac or for Windows download.owcdigital.com/dockejector/win
2. Launch the installer and follow the prompts. No restart is required.
3. Once the app is running an icon like the one shown below will appear in the macOS menubar, or, System Tray on Windows.



To learn more about OWC Dock Ejector please visit: go.owcdigital.com/dockejector.

1.5 Enclosure Features



Front Features

1. USB-C port – Power delivery / pass-through only – Connect a dedicated USB-C charger to this port to provide battery charging for the host computer or extra power when multiple devices are connected including high-power USB devices.

Side 1 Features

2. USB 3.2 (5Gb/s) port – Connect a bus-powered USB device here.
3. HDMI 2.0 port – Connect a compatible HDMI display here. Supports up to 4K @ 30Hz.

Side 2 Features

4. SD Media slot – Connect an SD, SDHC, and SDXC media card here. Compatible with UHS-II (Ultra High Speed). Can achieve speeds up to 156MB/s (SDHC) or 312MB/s (SDXC)
5. USB 3.2 (5Gb/s) port – Connect a bus-powered USB device here.

Stowable Cable Features

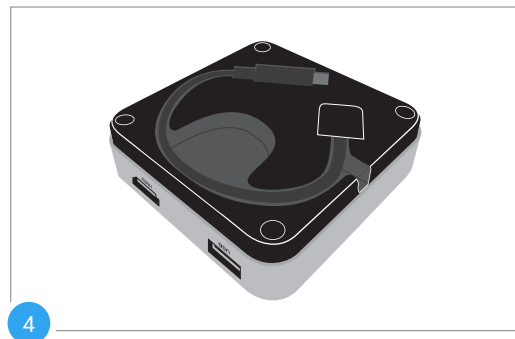
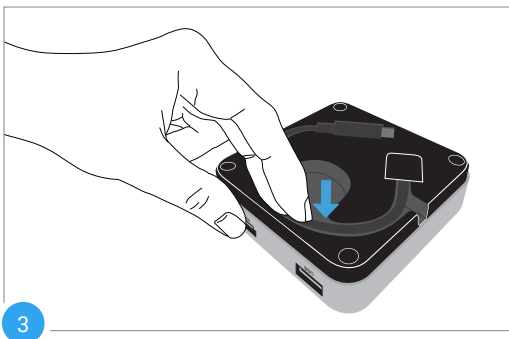
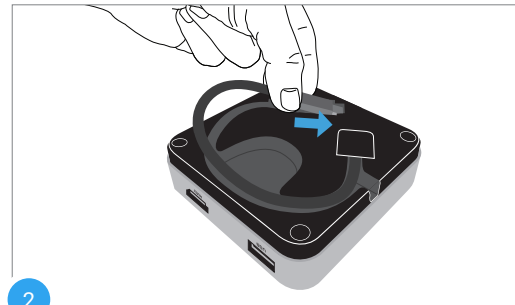
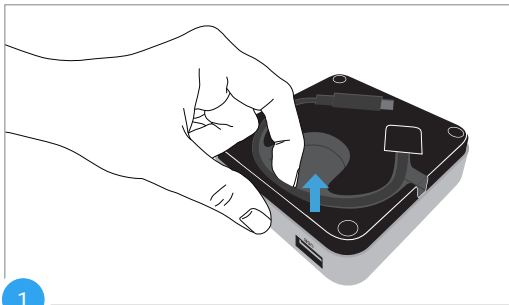
6. USB-C captive cable – Connect to your USB-C or Thunderbolt 3 host computer.

2.1 Usage Notes

- To install the optional driver for use with Apple Super Drive, Apple USB Keyboard, and charging of 1/2/3 generation iPads, please install the [OWC Dock Ejector app](#).
- Power port - In most scenarios the dock will draw 8W from its power source. When connected to a power adapter, the dock will draw power from the adapter instead of bus-powering from the host computer.
 - If the media reader or USB peripherals connected to the dock do not perform as expected, connect the dock to a dedicated USB-C power adapter.
 - Depending on the adapter connected, the dock can pass up to 92W to the host computer.
 - Any power not used by the dock and its ports, is passed to the host for battery charging, if applicable.
- Please note that while both of the USB ports on the USB-C Travel Dock (2019 edition) can support 'high power' bus-powered USB devices with the appropriate cable type, such as the OWC Envoy Pro EX or the Apple Super Drive, it is not possible to connect two high-power, bus-powered USB devices the same time, unless you have a dedicated power adapter connected to the dock's USB-C Power Delivery port.

2.2 Assembly Steps

- Removing (1) and Storing the Cable (2-4)



3.1 Contacting Technical Support



Phone: M–F, 8am–8pm Central Time
1.866.692.7100 (N. America)
+1.815.338.4751 (Int'l)



Chat: M–F, 8am–8pm, Sat 9am–5pm Central Time
www.owcdigital.com/support



Email: Answered within 48 hours
www.owcdigital.com/support

Changes:

The material in this document is for information purposes only and subject to change without notice. While reasonable efforts have been made in the preparation of this document to assure its accuracy, OWC, its parent, partners, affiliates, officers, employees, and agents assume no liability resulting from errors or omissions in this document, or from the use of the information contained herein. OWC reserves the right to make changes or revisions in the product design or the product manual without reservation and without obligation to notify any person of such revisions and changes.

FCC Statement:

Warning! Modifications not authorized by the manufacturer may void the user's authority to operate this device. NOTE: This equipment has been tested and found to comply with the limits for a Class B digital device, pursuant to Part 15 of the FCC Rules. These limits are designed to provide reasonable protection against harmful interference in a residential installation. This equipment generates, uses and can radiate radio frequency energy and, if not installed and used in accordance with the instructions, may cause harmful interference to radio communications. However, there is no guarantee that interference will not occur in a particular installation. If this equipment does cause harmful interference with radio or television reception, which can be determined by turning the equipment off and on, the user is encouraged to try to correct the interference by one or more of the following measures:

- Reorient or relocate the receiving antenna.
- Increase the separation between the equipment and receiver.
- Connect the equipment to an outlet on a circuit different from that to which the receiver is connected.

Warranty:

The OWC USB-C Travel Dock has a [2 Year OWC Limited Warranty](#). For up-to-date product and warranty information, please visit the [product web page](#).

Copyrights and Trademarks:

No part of this publication may be reproduced, stored in a retrieval system, or transmitted in any form or by any means, electronic, mechanical, photocopying, recording or otherwise, without the prior written consent of OWC.

© 2020 Other World Computing, Inc. All rights reserved. OWC and the OWC logo are trademarks of New Concepts Development Corporation, registered in the U.S. and/or other countries. Mac and macOS are trademarks of Apple Inc., registered in the U.S. and other countries. Thunderbolt and the Thunderbolt logo are trademarks of Intel Corporation in the U.S. and/or other countries. Other marks may be the trademark or registered trademark property of their owners.